

*Botto Poala*

BLOSSOM

NM. 44.000

55% CASHMERE

24% SETA

11% POLIAMMIDE

10% POLIESTERE (METALLIZZATO) LUREX®

NO STOCK SERVICE

IMPIEGO: MACCHINA RETTILINEA FIN. 18  
APPLICATIONS: FLAT MACHINES 18 COTTON 30 - 33 GG.

SOLIDITÀ COLORI:

RISPONDENTI ALLE NORME WOOLMARK.

PER USO IN RIGATO CON COLORI CONTRASTANTI RICHIEDERE  
SOLIDITÀ SPECIFICA PER RIGATURA.

COLOURS FASTNESS:

WOOLMARK STANDARDS

IN CASE OF STRIPED KNITWEAR WITH STRONG AND CONTRASTING  
COLOURS A SPECIFIC DYEING FASTNESS MUST BE ASKED.



PER CAPI RIGATI LAVARE A SECCO

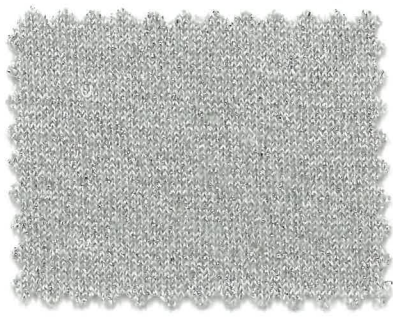
IN CASE OF STRIPED KNITWEAR DRYCLEANING IS RECOMMENDED



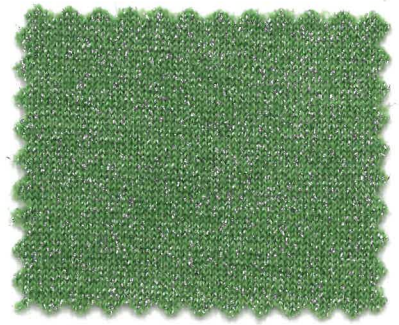
*Botto Poala*



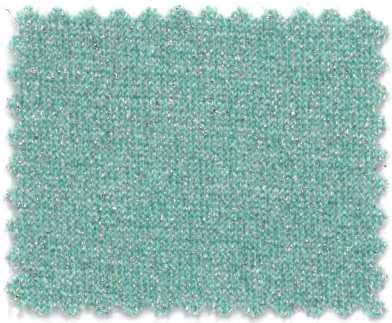
203072



203315



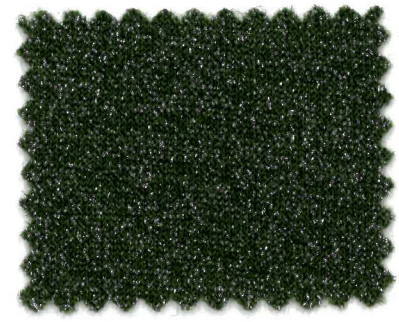
205995



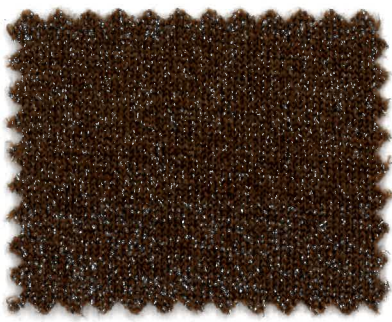
205837



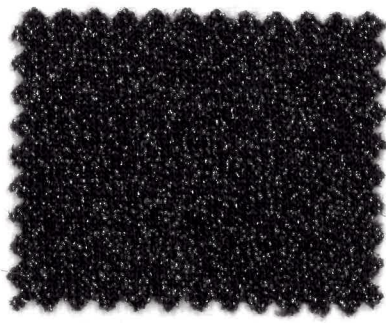
027899



205914



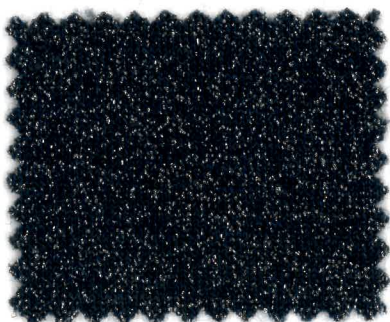
203298



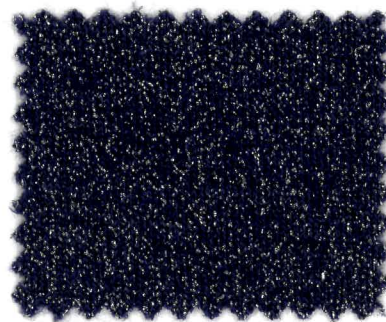
203305



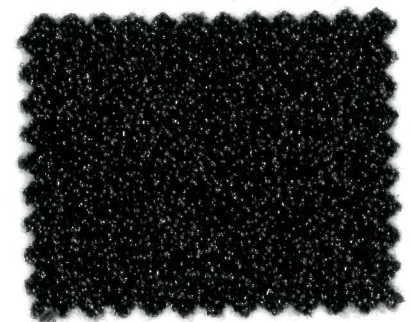
205970



203314



205969



205581