

ALTHEA NM. 1/15 - NM. 2/15

90% (WV) lana merino superfine
10% (WS) cashmere



ALTHEA NM. 1/15 - NM. 2/15

90% (WV) superfine merino wool
10% (WS) cashmere



ZHARA NM. 1/15 - NM. 2/15

80% (WV) lana merino superfine
20% (WS) cashmere

ZHARA NM. 1/15 - NM. 2/15

80% (WV) superfine merino wool
20% (WS) cashmere

EVOKE NM. 2/28

90% (WV) lana merino superfine
10% (WS) cashmere

EVOKE NM. 2/28

90% (WV) superfine merino wool
10% (WS) cashmere

IMPIEGO

NM 1/15
F.F. Cotton 21 gg, Rettilinea finezza 12 1 Capo
NM 2/15
F.F. Cotton 12 gg, Rettilinea finezza 7 1 Capo
NM 2/28
F.F. Cotton 21 gg, Rettilinea finezza 12 1 Capo

KNITTING

NM 1/15
F.F. Cotton 21 gg, Flat machine 12 1 Ply
NM 2/15
F.F. Cotton 12 gg, Flat machine 7 1 Ply
NM 2/28
F.F. Cotton 21 gg, Flat machine 12 1 Ply

FINISSAGGIO

La follatura è indispensabile per esaltare le caratteristiche del filo.

Si consiglia un trattamento in acqua tiepida max 30°C con sapone neutro e/o ammorbidente al 1,5% sul peso della merce. La durata del finissaggio dipende dal tipo di macchina e di risultato desiderato.

Asciugare in tumbler avendo cura di non essiccare troppo i capi/teli (max. 70°C).

Stirare con abbondante vapore.

FINISHING

Milling is necessary to enhance characteristics of the yarn.

Finishing in lukewarm water (max 30°C) with neutral soap and/or softener at 1,5% of the good's weight is recommended. The finishing time depends on the type of machine and desired results.

Tumble dry.

Do not over-dry (max. 70°C).

Finish giving generous steam.

Colori uniti: si possono tingere tutti i colori delle cartelle stagionali e colori a richiesta.

Solid Colours: colours from our seasonal colour cards or custom-made colours can be dyed.



Associazione Tessile e Salute

I nostri articoli soddisfano tutti i requisiti di Tessile e Salute.

Zegna Baruffa Lane Borgosesia partecipa al progetto Tessile e Salute finanziato dal Ministero della Salute.

1

2

3

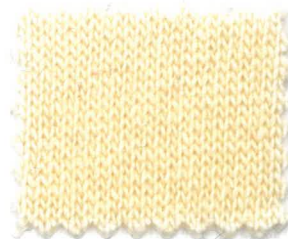
A



711810



711624



*•Δ 715410

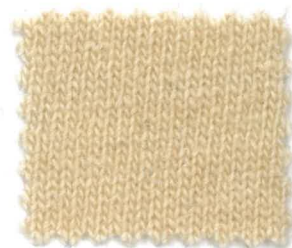
B



*Δ 840086
Melange



• 840009
Melange



*Δ 715505

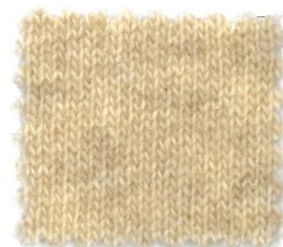
C



*•Δ 840087



* 840084
Melange



• 840059
Melange

D



*• 840088
Melange



* 715485
Melange



*Δ 715428
Melange

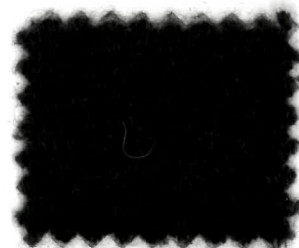
E



850139

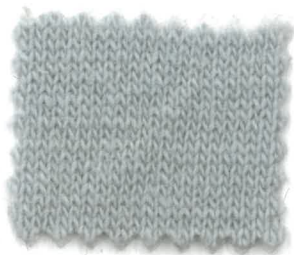


841981



780263

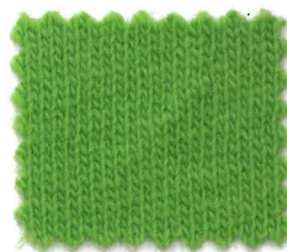
A



711824



715419
Melange



201161

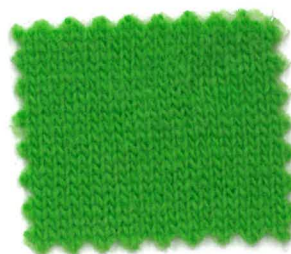
B



718976



Δ 200020



204618

C



Δ 714763



* 203509



● 711380

D



*●Δ 715503
Melange



204544



* 204619

E



● 840081
Melange



*● 027962

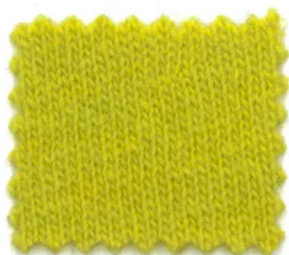


Δ 780889

A



* 028149



841923

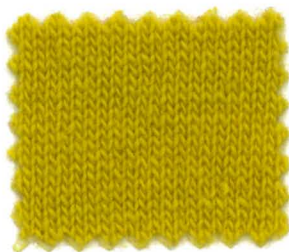


● 715416
Melange

B



● 840100
Melange

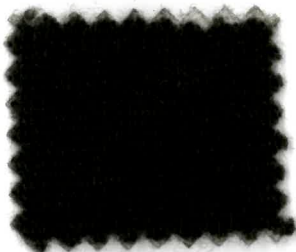


028150



*Δ 711767

C



*Δ 028154



711776



* 715417
Melange

D



849604
Melange

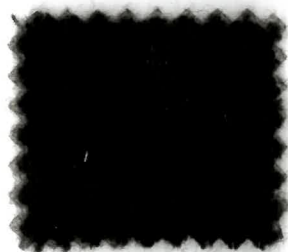


840063
Melange



840132
Melange

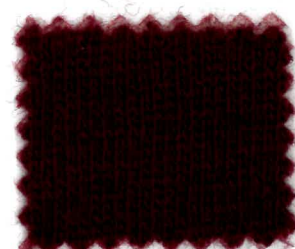
E



● 840122



204884



*Δ 849636

10

11

12

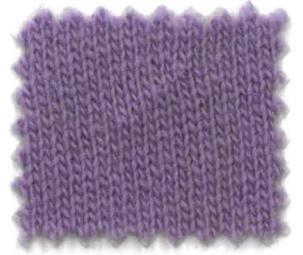
A



820872



* 715425



201181

B



•Δ 820871



*• 780698



711820

C



*• 715418
Melange



840144
Melange

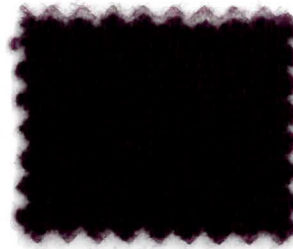


849646

D



*Δ 204606



204610



028130

E



204547

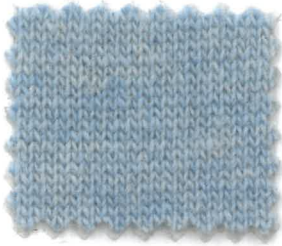


• 840141
Melange

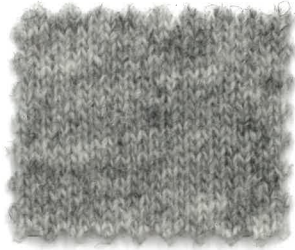


* 027984

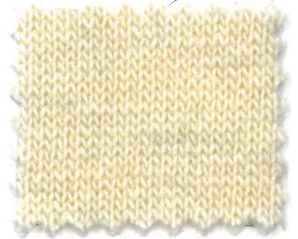
A



* 715423
Melange



*● 849408
Melange



*● 840056
Melange

B



840031
Melange



*●Δ 849447
Melange



*●Δ 715431
Melange

C



● 840033
Melange



821018

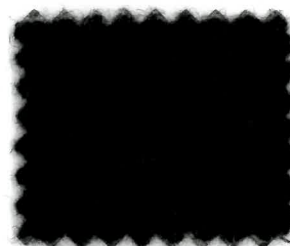


711517

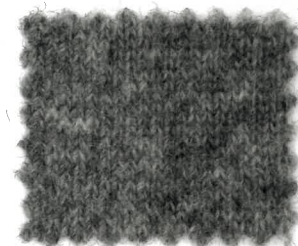
D



* 715413
Melange



●Δ 840006
Melange



*●Δ 840004
Melange

E



*●Δ 715414



*●Δ 715433



714494

INDEX

*● 027962	5/E		714494	15/E		Melange	●△ 840006	14/D		
* 027984	12/E		△ 714763	4/C		Melange	● 840009	2/B		
	028130	12/D		*●△ 715410	3/A		Melange	840031	13/B	
* 028149	7/A		Melange	* 715413	13/D		Melange	● 840033	13/C	
	028150	8/B		*●△ 715414	13/E		Melange	*● 840056	15/A	
*△ 028154	7/C		Melange	● 715416	9/A		Melange	● 840059	3/C	
△ 200020	5/B		Melange	* 715417	9/C		Melange	840063	8/D	
	201161	6/A		Melange	*● 715418	10/C		● 840081	4/E	
	201181	12/A		Melange	715419	5/A		* 840084	2/C	
* 203509	5/C			Melange	* 715423	13/A		Melange	*△ 840086	1/B
	204544	5/D			* 715425	11/A		Melange	*●△ 840087	1/C
	204547	10/E		Melange	*△ 715428	3/D		Melange	*● 840088	1/D
*△ 204606	10/D			Melange	*●△ 715431	15/B		Melange	● 840100	7/B
	204610	11/D			*●△ 715433	14/E			● 840122	7/E
	204618	6/B		Melange	* 715485	2/D		Melange	840132	9/D
* 204619	6/D			Melange	*●△ 715503	4/D		Melange	● 840141	11/E
	204884	8/E			*△ 715505	3/B		Melange	840144	11/C
● 711380	6/C				718976	4/B			841923	8/A
	711517	15/C			780263	3/E			841981	2/E
	711624	2/A			*● 780698	11/B		Melange	*● 849408	14/A
*△ 711767	9/B				△ 780889	6/E		Melange	*●△ 849447	14/B
	711776	8/C			●△ 820871	10/B		Melange	849604	7/D
	711810	1/A			820872	10/A			*△ 849636	9/E
	711820	12/B			821018	14/C			849646	12/C
	711824	4/A		Melange	*●△ 840004	15/D			850139	1/E

* Althea: Colori disponibili / Available colours

● Zhara: Colori disponibili / Available colours

△ Evoke: Colori disponibili / Available colours