

SIRIO SILVER

NM. 32.000

84% LANA MERINO EXTRAFINE SUPER 120'S
9% POLIAMMIDE
7% POLIESTERE (METALLIZZATO) LUREX®

● STOCK SERVICE

IMPIEGO: MACCHINA RETTILINEA FIN. 16-18 COTTON 27-30 GG.

SIRIO GOLD

NM. 32.000

84% LANA MERINO EXTRAFINE SUPER 120'S
9% POLIAMMIDE
7% POLIESTERE (METALLIZZATO) LUREX®

* STOCK SERVICE

IMPIEGO: MACCHINA RETTILINEA FIN. 16-18 COTTON 27-30 GG.

SOLIDITA' COLORI:

RISPONDENTI ALLE NORME WOOLMARK.

PER USO IN RIGATO È NECESSARIO EFFETTUARE PROVE PREVENTIVE

NB

È IMPORTANTE NOTARE CHE, A PARITÀ DI CODICE, L'EFFETTO OTTICO DEL COLORE CAMBIA NOTEVOLMENTE A SECONDA DELL'ARTICOLO SUL QUALE VIENE TINTO, ANCHE A CAUSA DEL RIFLESSO CALDO O FREDDO DEL METALLO. CONSIGLIAMO DI CHIEDERE UNA PROVA DI LABORATORIO PER COLORI NON PRESENTI IN CARTELLA.

PER CAPI RIGATI LAVARE A SECCO



SIRIO SILVER

NM. 32.000

84% EXTRAFINE MERINO WOOL SUPER 120'S
9% POLIAMMIDE
7% POLYESTER (METALLIZED) LUREX®

● STOCK SERVICE

APPLICATIONS: FLAT MACHINES 16-18 COTTON 27-30 GG.

SIRIO GOLD

NM. 32.000

84% EXTRAFINE MERINO WOOL SUPER 120'S
9% POLYAMIDE
7% POLYESTER (METALLIZED) LUREX®

* STOCK SERVICE

APPLICATIONS: FLAT MACHINES 16-18 COTTON 27-30 GG.

COLOURS FASTNESS:

WOOLMARK STANDARDS.

IN CASE OF STRIPED KNITWEAR SPECIFIC TESTING MUST BE EFFECTED

NB

WE WISH TO POINT OUT THAT THE VISUAL PERCEPTION OF A COLOUR, THE COLOUR CODE BEING EQUAL, VERY MUCH VARIES DEPENDING ON THE TYPE OF YARN ON WHICH IT IS DYED. DUE TO THE WARM OR COOL METAL REFLECTION, IT IS ADVISABLE TO ASK FOR A LAB-DIP IF YOU WISH TO ORDER A COLOUR WHICH IS NOT INCLUDED IN THIS COLOUR CARD.

IN CASE OF STRIPED KNITWEAR
DRYCLEANING IS RECOMMENDED

INDEX

g	028056	2/B	●s	210335	3/C
●s	028184	3/A	●s	210453	1/C
●s	210317	1/A	s	210460	3/B
*g	210318	2/C	s	210511	1/D
s	210319	2/A	g	210522	2/D
s	210330	1/B	●s	781523	3/D

1

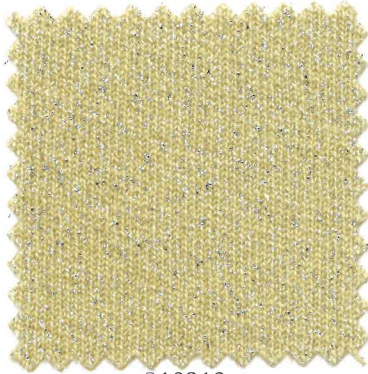
2

3

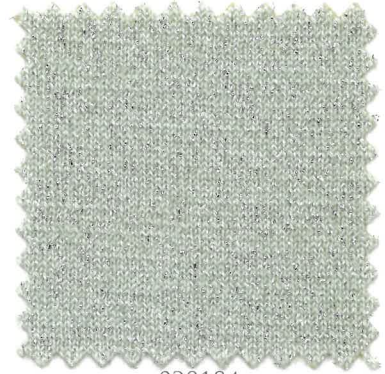
A



210317
s ●



210319
s



028184
s ●

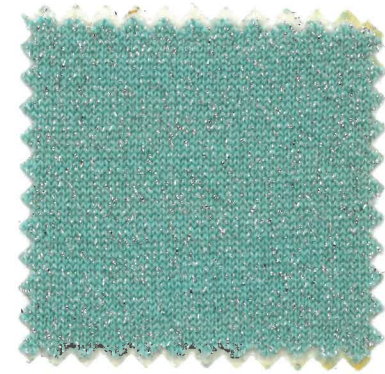
B



210330
s



028056
G



210460
s

C



210453
s ●

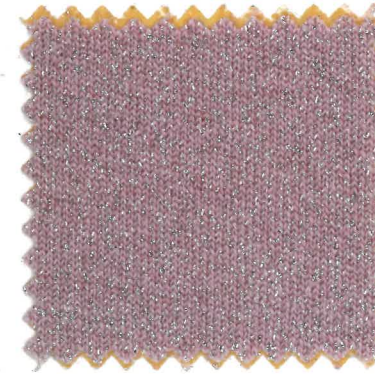


210318
G *



210335
s ●

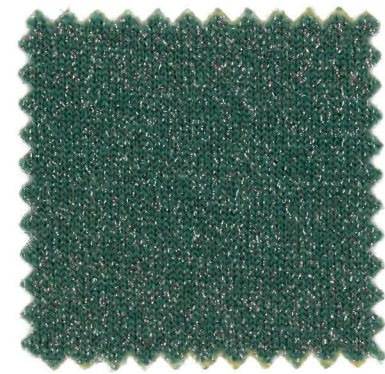
D



210511
s



210522
G



781523
s ●