



MOUSSE

Nm. 8000
80% (WV) LANA EXTRAFINE
20% (PA) POLIAMMIDE

IMPIEGO

Rettilinea finezza 7-8 1 Capo

MOUSSE

Nm. 14000
70% (WV) LANA EXTRAFINE
30% (PA) POLIAMMIDE

IMPIEGO

Rettilinea finezza 12 Cotton 21 - 24 gg. 1 Capo

Y-ER

Nm. 8000
80% (WV) LANA MERINO EXTRAFINE
20% (PA) POLIAMMIDE

IMPIEGO

Rettilinea finezza 7-8 1 Capo

FINISSAGGIO

Dettagli di finissaggio sono disponibili su richiesta.

QUANTITA OTTIMALI

Colori disponibili: a partire da 1 kg.
Collo ideale: kg. 20 circa.
Supplementi per colli di peso inferiore.

MOUSSE: Colori uniti a campione, tinti in matassa:
kg. 6-16-30-42-63-84-126-252

Y-ER:

È possibile produrre, con un minimo di 24 kg., tutti i colori della cartella Mousse.

Colori melange a campione kg. 300 minimo.

Supplementi: saranno applicati come previsto dalle nostre condizioni generali di vendita.

SOLIDITA COLORI

CONFORMITÀ NORMATIVA REACH.
CONFORMITÀ NORMATIVA GB 18401
(Categoria B: prodotti a contatto diretto con la pelle)

PER USO IN RIGATO CON COLORI CONTRASTANTI
RICHIEDERE SOLIDITA' SPECIFICA PER RIGATURA.

Eventuali esigenze particolari andranno specificate all'atto dell'ordine.

MOUSSE

Nm. 8000
80% (WV) EXTRAFINE WOOL
20% (PA) POLYAMIDE

KNITTING

Flat machine 7-8 1 Ply

MOUSSE

Nm. 14000
70% (WV) EXTRAFINE WOOL
30% (PA) POLYAMIDE

KNITTING

Flat machine 12 F. F. Cotton 21 - 24 gg. 1 Ply

Y-ER

Nm. 8000
80% (WV) EXTRAFINE MERINO WOOL
20% (PA) POLYAMIDE

KNITTING

Flat machine 7-8 1 Ply

FINISHING

Finishing details are available on request.

IDEAL QUANTITIES

Availabe colours: starting from 1 kg. each.
Ideal box: approximately kgs. 20.
Surcharge for cartons of inferior weight.

MOUSSE: Custom, hank dyed, solid shades:
kgs. 6-16-30-42-63-84-126-252

Y-ER:

All colours included in the Mousse colour card can be produced, with 24 kgs. minimum.

Custom melange colours: minimum kgs. 300

Surcharges: will be added according to our general sales conditions.

COLOURS FASTNESS

REACH REGULATION.
GB 18401 REGULATION COMPLIANCE
(Category B: products directly in contact with the skin)
IN CASE OF STRIPED OR CONTRAST KNITWEAR A SPECIFIC DYEING FASTNESS MUST BE ASKED.

Any other special need should be expressly requested.

(Teli follati)



(Finished knittings)

(Teli solo vaporizzati)



(Only steamed knittings)



Associazione Tessile e Salute

I nostri articoli soddisfano tutti i requisiti di Tessile e Salute.

Zegna Baruffa Lane Borgosesia partecipa al progetto Tessile e Salute sostenuto dal Ministero della Salute.

www.tessileesalute.it

Certificato n° 14900021



Traceability & Fashion

Codice di tracciabilità n° CTC0057A



CONFIDENCE
IN TEXTILES

Tested for harmful substances
according to Oeko-Tex® Standard 100
993654.0 CENTROCOT



alperia

green
energy

südtirol alto adige

1

2

3

A



600209

*



630578



600208

B



027969



500151

*



630805

C



027817



600068

*



630580

D

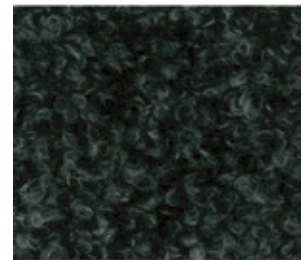


630790



600264

*



630808

E



620499



630791



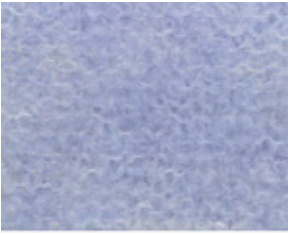
630807

4

5

6

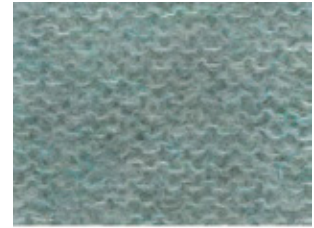
A



630569



600250



630792

B



600235



630019



630817

C



630809

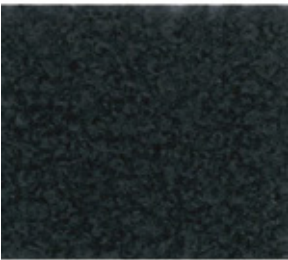


621442



621833

D



028681



500057

*



018470

E

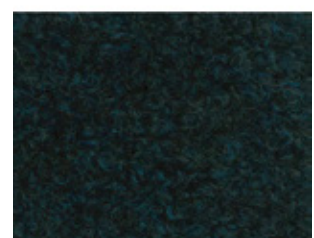


630810



099070

*



621076

7

8

9

A



630745



630795



028092

B



630574



600238

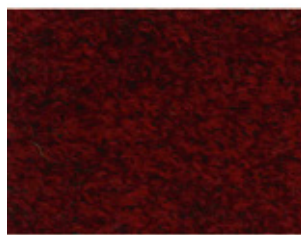


630939

C



621832



600156

*



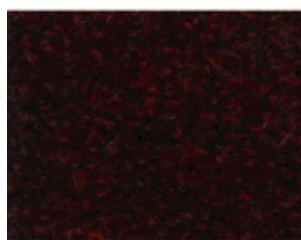
600157

D



600018

*



500025

*



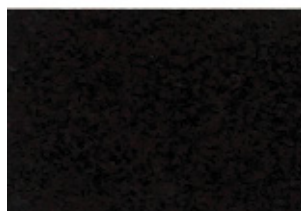
600175

*

E



630018



500026

*



630814

10

11

12

A



600273



028587



208376

B



630971

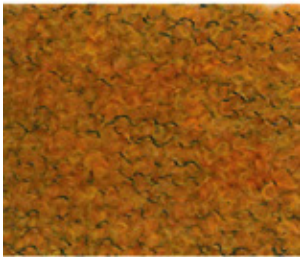


630576



630575

C



620402



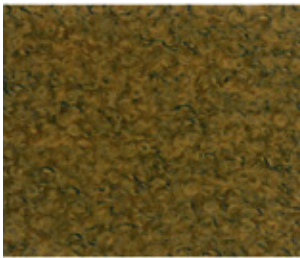
028430



500021

*

D



018691



630972



600252

E



630794



630973



017747

13

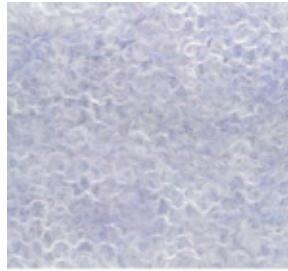
14

15

A



600258



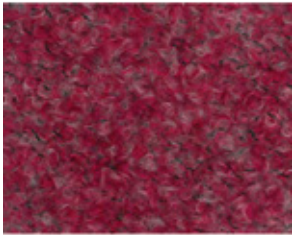
630568



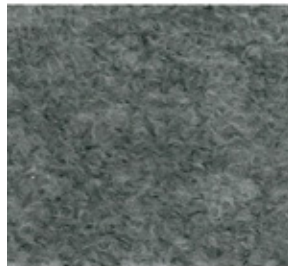
600045

*

B



630815



621061

*



600210

*

C



028596



621062

*



017555

D



630749

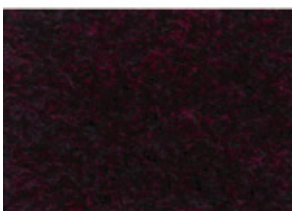


600239

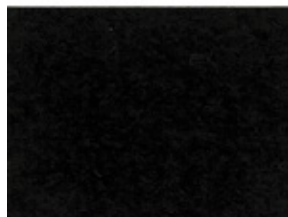


630811

E



621440



630744



027098

INDEX

017555	15C		600208	3A	630575	12B
017747	12E	*	600209	1A	630576	11B
018470	6D	*	600210	15B	630578	2A
018691	10D		600235	4B	630580	3C
027098	15E		600238	8B	630744	14E
027817	1C		600239	14D	630745	7A
027969	1B		600250	5A	630749	13D
028092	9A		600252	12D	630790	1D
028430	11C		600258	13A	630791	2E
028587	11A	*	600264	2D	630792	6A
028596	13C		600273	10A	630794	10E
028681	4D		620402	10C	630795	8A
* 099070	5E		620499	1E	630805	3B
208376	12A	*	621061	14B	630807	3E
* 500021	12C	*	621062	14C	630808	3D
* 500025	8D		621076	6E	630809	4C
* 500026	8E		621440	13E	630810	4E
* 500057	5D		621442	5C	630811	15D
* 500151	2B		621832	7C	630814	9E
* 600018	7D		621833	6C	630815	13B
* 600045	15A		630018	7E	630817	6B
* 600068	2C		630019	5B	630939	9B
* 600156	8C		630568	14A	630971	10B
600157	9C		630569	4A	630972	11D
* 600175	9D		630574	7B	630973	11E

MOUSSE Nm. 8000 - Nm. 14000: tutti i colori sono disponibili / All colours are available

* Colori disponibili in Y-ER Nm. 8000 / Available colours in Y-ER Nm. 8000