



CASHMERE

Nm. 2/28
100% (WS) CASHMERE

IMPIEGO

Rettilinea Finezza 12 Cotton 21-24 GG a 1 capo

FINISSAGGIO

Dettagli di finissaggio sono disponibili su richiesta.

QUANTITÀ OTTIMALI

Collo ideale: kg. 20 circa
Colori a campione.
Tinti in matasse:
kg. 6 - 16 - 30 - 36 - 48 - 55 - 63 - 84 - 125 - 250
Tinti in fiocco: kg. 40 minimo

Supplementi: saranno applicati come previsto dalle nostre condizioni generali di vendita.

SOLIDITÀ COLORI:

CONFORMITÀ NORMATIVA REACH
CONFORMITÀ NORMATIVA GB 18401
(Categoria B: prodotti a contatto diretto con la pelle)
PER USO IN RIGATO CON COLORI CONTRASTANTI
RICHIEDERE SOLIDITÀ SPECIFICA PER RIGATURA.
Eventuali esigenze particolari andranno specificate all'atto dell'ordine.

CASHMERE

Nm. 2/28
100% (WS) CASHMERE

KNITTING

Flat machine 12 F.F. Cotton 21-24 GG 1 Ply

FINISHING

Finishing details are available on request.

IDEAL QUANTITIES

Standard box: approximately Kgs. 20
Custom or non stock service colours:
Hank dyed solid shades:
kgs. 6 - 16 - 30 - 36 - 48 - 55 - 63 - 84 - 125 - 250
Fiber dyed colours: minimum kgs.40

Surcharges: will be added according to our general sales conditions.

COLOURS FASTNESS:

REACH REGULATION
GB 18401 REGULATION COMPLIANCE
(Category B: products directly in contact with the skin)
IN CASE OF STRIPED OR CONTRAST KNITWEAR A
SPECIFIC DYEING FASTNESS MUST BE ASKED.
Any other special need should be expressly requested.



Associazione Tessile e Salute

I nostri articoli soddisfano tutti i requisiti di Tessile e Salute.

Zegna Baruffa Lane Borgosesia partecipa al progetto Tessile e Salute sostenuto dal Ministero della Salute.

www.tessileesalute.it

Certificato n° 14900021



Traceability & Fashion

Codice di tracciabilità n° CTC0057A



Tested for harmful substances
according to Oeko-Tex® Standard 100
993654.0
CENTROCOT





1

2

3

A



753827 Ch.
Melange



753795 Ch.
Melange



753792 Ch.
Melange

B



753845 Ch.
Melange



753847 Ch.
Melange



753259 Ch.
Melange

C



758801 Ch.
Melange

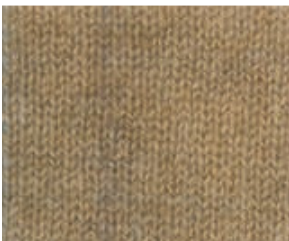


763312 Md.
Melange



753846 Ch.
Melange

D



753824 Ch.
Melange



773816 Sc.
Melange



763805 Md.
Melange



4

5

6

A



753877 Ch.



753883 Ch.
Melange



758873 Ch.

B



753301 Ch.



753879 Ch.
Melange

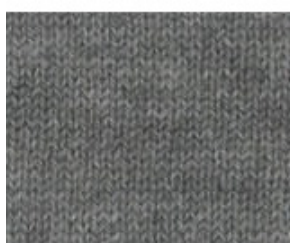


763809 Md.
Melange

C



753198 Ch.



758803 Ch.
Melange



763807 Md.
Melange

D



753249 Ch.
Melange



753878 Ch.
Melange



763802 Md.
Melange



7

8

9

A



758798 Ch.
Melange



758800 Ch.
Melange



758799 Ch.
Melange

B



753794 Ch.
Melange



753808 Ch.
Melange



763880 Md.
Melange

C



753224 Ch.
Melange

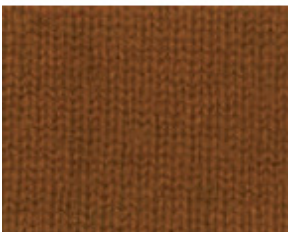


753802 Ch.
Melange



768764 Md.
Melange

D



758761 Ch.



763798 Md.
Melange



763803 Md.
Melange



10

11

12

A



758838 Ch.
Melange



753807 Ch.
Melange



758790 Ch.

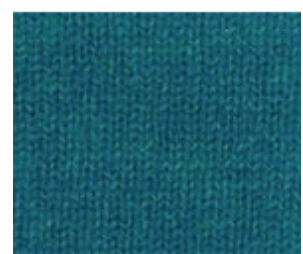
B



753838 Ch.
Melange



758842 Ch.
Melange



758841 Ch.
Melange

C



753839 Ch.
Melange



753254 Ch.
Melange



763873 Md.
Melange

D



763800 Md.
Melange



768763 Md.
Melange



763808 Md.
Melange



13

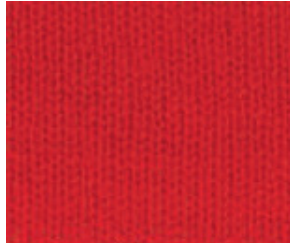
14

15

A



758766 Ch.
Melange

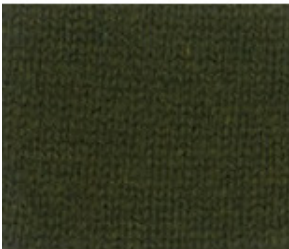


753854 Ch.



753828 Ch.
Melange

B



753861 Ch.
Melange

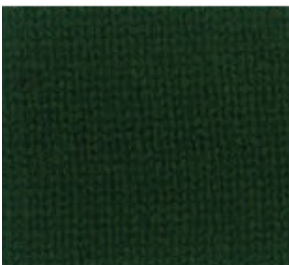


758794 Ch.



753851 Ch.
Melange

C



753217 Ch.



758853 Ch.



753232 Ch.
Melange

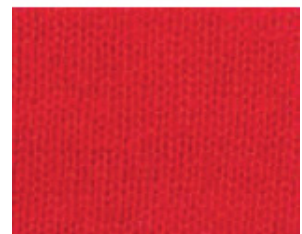
D



753812 Ch.



758855 Ch.



753804 Ch.
Melange



16

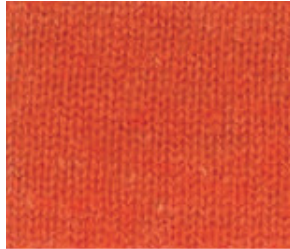
17

18

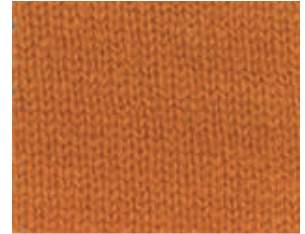
A



758814 Ch.



753895 Ch.
Melange



753815 Ch.

B



758778 Ch.



758758 Ch.



753830 Ch.
Melange

C



753935 Ch.

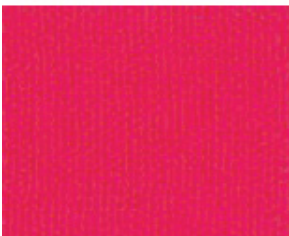


753739 Ch.

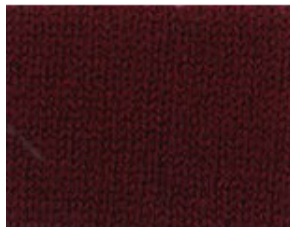


758777 Ch.

D



753833 Ch.



773621 Sc.



753822 Ch.



19

20

21

A



758836 Ch.
Melange



753842 Ch.
Melange



753436 Ch.
Melange

B



758830 Ch.
Melange



753221 Ch.
Melange



768771 Md.
Melange

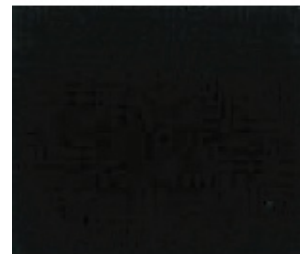
C



773725 Sc.
Melange

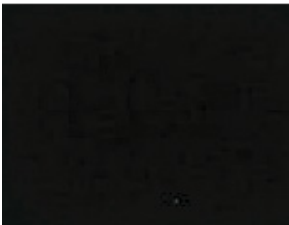


773686 Sc.

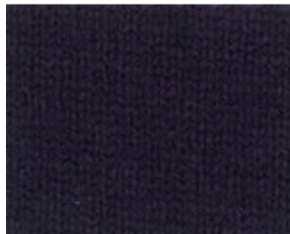


773688 Sc.

D



773361 Sc.



753219 Ch.
Melange



773687 Sc.

INDEX

	753198	Ch.	4C	<i>Melange</i>	753839	Ch.	10C	<i>Melange</i>	758836	Ch.	19A
	753217	Ch.	13C	<i>Melange</i>	753842	Ch.	20A	<i>Melange</i>	758838	Ch.	10A
<i>Melange</i>	753219	Ch.	20D	<i>Melange</i>	753845	Ch.	1B	<i>Melange</i>	758841	Ch.	12B
<i>Melange</i>	753221	Ch.	20B	<i>Melange</i>	753846	Ch.	3C	<i>Melange</i>	758842	Ch.	11B
<i>Melange</i>	753224	Ch.	7C	<i>Melange</i>	753847	Ch.	2B		758853	Ch.	14C
<i>Melange</i>	753232	Ch.	15C	<i>Melange</i>	753851	Ch.	15B		758855	Ch.	14D
<i>Melange</i>	753249	Ch.	4D		753854	Ch.	14A		758873	Ch.	6A
<i>Melange</i>	753254	Ch.	11C	<i>Melange</i>	753861	Ch.	13B	<i>Melange</i>	763312	Md.	2C
<i>Melange</i>	753259	Ch.	3B		753877	Ch.	4A	<i>Melange</i>	763798	Md.	8D
	753301	Ch.	4B	<i>Melange</i>	753878	Ch.	5D	<i>Melange</i>	763800	Md.	10D
<i>Melange</i>	753436	Ch.	21A	<i>Melange</i>	753879	Ch.	5B	<i>Melange</i>	763802	Md.	6D
	753739	Ch.	17C	<i>Melange</i>	753883	Ch.	5A	<i>Melange</i>	763803	Md.	9D
<i>Melange</i>	753792	Ch.	3A	<i>Melange</i>	753895	Ch.	17A	<i>Melange</i>	763805	Md.	3D
<i>Melange</i>	753794	Ch.	7B		753935	Ch.	16C	<i>Melange</i>	763807	Md.	6C
<i>Melange</i>	753795	Ch.	2A		758758	Ch.	17B	<i>Melange</i>	763808	Md.	12D
<i>Melange</i>	753802	Ch.	8C		758761	Ch.	7D	<i>Melange</i>	763809	Md.	6B
<i>Melange</i>	753804	Ch.	15D	<i>Melange</i>	758766	Ch.	13A	<i>Melange</i>	763873	Md.	12C
<i>Melange</i>	753807	Ch.	11A		758777	Ch.	18C	<i>Melange</i>	763880	Md.	9B
<i>Melange</i>	753808	Ch.	8B		758778	Ch.	16B	<i>Melange</i>	768763	Md.	11D
	753812	Ch.	13D		758790	Ch.	12A	<i>Melange</i>	768764	Md.	9C
	753815	Ch.	18A		758794	Ch.	14B	<i>Melange</i>	768771	Md.	21B
	753822	Ch.	18D	<i>Melange</i>	758798	Ch.	7A		773361	Sc.	19D
<i>Melange</i>	753824	Ch.	1D	<i>Melange</i>	758799	Ch.	9A		773621	Sc.	17D
<i>Melange</i>	753827	Ch.	1A	<i>Melange</i>	758800	Ch.	8A		773686	Sc.	20C
<i>Melange</i>	753828	Ch.	15A	<i>Melange</i>	758801	Ch.	1C		773687	Sc.	21D
<i>Melange</i>	753830	Ch.	18B	<i>Melange</i>	758803	Ch.	5C		773688	Sc.	21C
	753833	Ch.	16D		758814	Ch.	16A	<i>Melange</i>	773725	Sc.	19C
<i>Melange</i>	753838	Ch.	10B	<i>Melange</i>	758830	Ch.	19B	<i>Melange</i>	773816	Sc.	2D

Ch: Chiaro/Light - Md: Medio/Medium - Sc: Scuro/Dark

Chiavazza, con la sua ampia offerta di lussuosi cardati, completa ed arricchisce la proposta di Zegna Baruffa Lane Borgosesia. Specializzata nella filatura del cashmere - puro o in mischia - offre uno stock service di 60 colori nel Cashmere 2/28.

La scelta innovativa e pionieristica di Chiavazza di produrre cashmere in Italia nei primi anni '60, impostando l'intero ciclo produttivo negli stabilimenti di Vigliano, è nata nel rispetto di un credo qualitativo ed etico che da sempre caratterizza il Gruppo Zegna Baruffa Lane Borgosesia.

Lotti rigorosamente selezionati di finissima materia prima, ricavata dal sottovello della Capra Hircus, vengono convogliati nella lavorazione e trasformati - mediante metodologie uniche e abilità tecniche che determinano l'esclusività della "ricetta" - in un filato di altissima qualità, dalla mano straordinariamente morbida e dalla leggerezza incomparabile.



Chiavazza, with its large range of luxury woollen spun yarns, completes and enriches Zegna Baruffa Lane Borgosesia's offer. Specialized in cashmere spinning - pure or blended - they present for Cashmere 2/28 a 60 colour stock service.

The Chiavazza's innovative and pioneering choice to produce cashmere in Italy starting in the early 60's, setting the entire production cycle within the Vigliano plant, was made sticking to the company's quality and ethical credo, which has always typified the Zegna Baruffa Lane Borgosesia Group.

The finest, rigorously selected fibre lots from the Hircus Goat underfleece are routed into the production cycle and transformed - through unique methodologies and technical skills which are the company's "proprietary formula" - in a yarn of extreme quality, extraordinarily soft touch and incomparable lightness.