



Botto Poala

GOLD

NM. 2/48

70% (WS) CASHMERE

30% (SE) SETA

■ COLORI DISPONIBILI

IMPIEGO: MACCHINA RETTILINEA FIN. 14-16 COTTON 27-30-33 GG.

GOLD

NM. 2/80 - NM. 3/80

70% (WS) CASHMERE

30% (SE) SETA

● COLORI DISPONIBILI

IMPIEGO NM. 2/80: MACCHINA RETT. FIN. 18-21 COTTON 33-37-42 GG.

IMPIEGO NM. 3/80: MACCHINA RETT. FIN. 16-18 COTTON 30-33 GG.

I COLORI CON EFFETTO SABLÉ DEVONO ESSERE CONSIDERATI A TITOLO INDICATIVO, IN QUANTO LA LORO RIPRODUZIONE PUÒ VARIARE A SECONDA DELLA COMPOSIZIONE DEL FILO SUL QUALE GLI STESSI VENGONO TINTI. E' BENE PERTANTO TENERE IN CONSIDERAZIONE CHE NON SIAMO SEMPRE IN GRADO DI GARANTIRE UNA PERFETTA E FEDELE RIPRODUZIONE DEL COLORE RISPETTO AL CAMPIONE DI RIFERIMENTO.

FINISSAGGIO:

DETTAGLI DI FINISSAGGIO SONO DISPONIBILI SU RICHIESTA.

QUANTITÀ OTTIMALI

COLORI DISPONIBILI: A PARTIRE DA KG. 1,

COLLO IDEALE KG. 20 CA.

COLORI UNITI NON DISPONIBILI O A CAMPIONE:

KG. 6 - 9 - 12 - 16 - 24 - 30 - 40 - 60 - 73 - 100 - 150 - 300 - 600

SUPPLEMENTI: SARANNO APPLICATI COME PREVISTO DALLE NOSTRE CONDIZIONI GENERALI DI VENDITA.

SOLIDITÀ COLORI:

CONFORMITÀ NORMATIVA REACH

CONFORMITÀ NORMATIVA GB 18401 (CATEGORIA B: PRODOTTI A CONTATTO DIRETTO CON LA PELLE).

PER USO IN RIGATO CON COLORI CONTRASTANTI RICHIEDERE SOLIDITÀ SPECIFICA PER RIGATURA.

EVENTUALI ESIGENZE PARTICOLARI ANDRANNO SPECIFICATE ALL'ATTO DELL'ORDINE.

GOLD

NM. 2/48

70% (WS) CASHMERE

30% (SE) SILK

■ AVAILABLE COLOURS

APPLICATIONS: FLAT MACHINE 14-16 COTTON 27-30-33 GG.

GOLD

NM. 2/80 - NM. 3/80

70% (WS) CASHMERE

30% (SE) SILK

● AVAILABLE COLOURS

APPLICATIONS NM. 2/80: FLAT MACHINE 18-21 COTTON 33-37-42 GG.

APPLICATIONS NM. 3/80: FLAT MACHINE 16-18 COTTON 30-33 GG.

THE SABLÉ COLOURS HAVE TO BE CONSIDERED AS AN INDICATION, AS THEIR REPRODUCTION CAN VARY DEPENDING ON THE COMPOSITION OF THE YARN ON WHICH THEY ARE DYED. PLEASE NOTE THAT WE ARE NOT ALWAYS ABLE TO GUARANTEE A PERFECT AND FAITHFUL COLOUR REPRODUCTION.

FINISHING:

FINISHING DETAILS ARE AVAILABLE ON REQUEST.

IDEAL QUANTITIES:

AVAILABLE COLOURS: STARTING FROM 1 KG. EACH

STANDARD BOX APPROXIMATELY KGS. 20

NON AVAILABLE OR CUSTOM SOLID COLOURS:

KGS. 6 - 9 - 12 - 16 - 24 - 30 - 40 - 60 - 73 - 100 - 150 - 300 - 600

SURCHARGES: WILL BE ADDED ACCORDING TO OUR GENERAL SALES CONDITIONS.

COLOURS FASTNESS:

REACH REGULATION

GB 18401 REGULATION COMPLIANCE (CATEGORY B: PRODUCTS DIRECTLY IN CONTACT WITH THE SKIN).

IN CASE OF STRIPED OR CONTRAST KNITWEAR A SPECIFIC DYEING FASTNESS MUST BE ASKED.

ANY OTHER SPECIAL NEED SHOULD BE EXPRESSEDLY REQUESTED.

PER CAPI RIGATI LAVARE A SECCO



IN CASE OF STRIPED KNITWEAR DRYCLEANING IS RECOMMENDED



Associazione Tessile e Salute

I nostri articoli soddisfano tutti i requisiti di Tessile e Salute.

Zegna Baruffa Lane Borgosesia partecipa al progetto Tessile e Salute sostenuto dal Ministero della Salute.

www.tessileesalute.it

Certificato n° 14900021



Traceability & Fashion

Codice di tracciabilità n° CTC0057A



Tested for harmful substances according to Oeko-Tex® Standard 100 993654.0 CENTROCOT



1

2

3

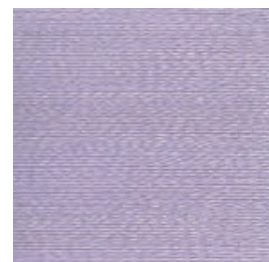
A



200124



217046



028537



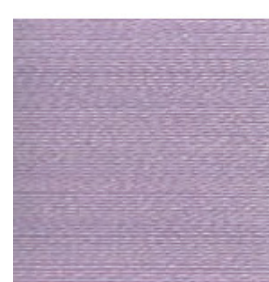
B



216116

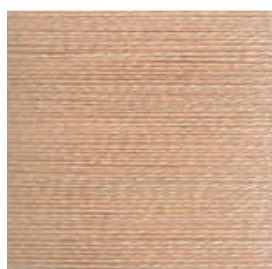


217047

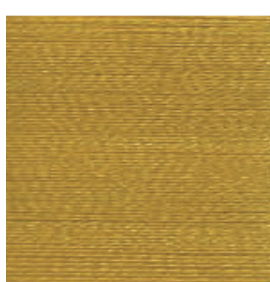


028479

C



027815

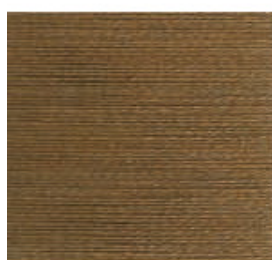


211831



028293

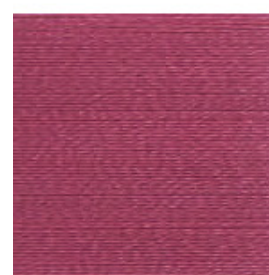
D



MELANGE
840813



028155



028666

E



SABLÉ
017418



216135



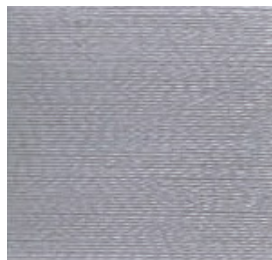
SABLÉ
017140

4

5

6

A



212016



027132

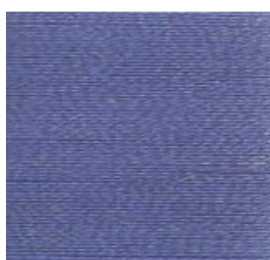


208382

B



028488

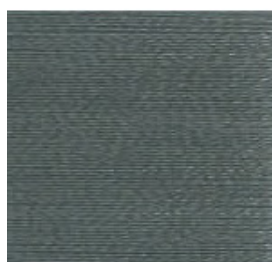


028317



216114

C



210335



204993



028669



D



028123



212114

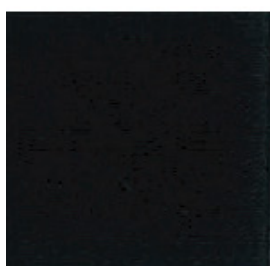


216115

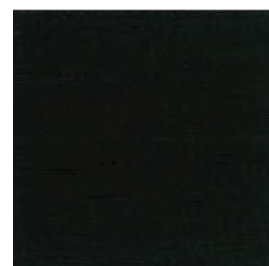
E



SABLÉ
017136



027573



216136

7

8

9

A



217048



028340



027123

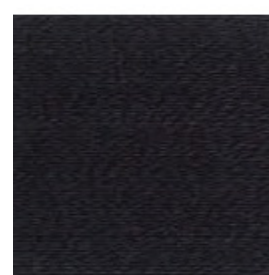
B



028394



201854



204432

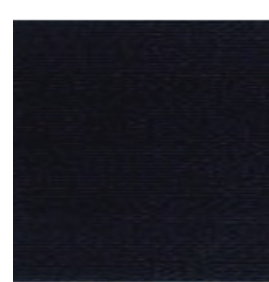
C



207289



206214



028014

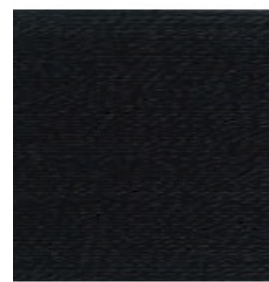
D



217049



074781

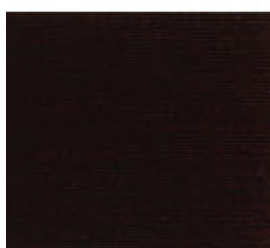


027087

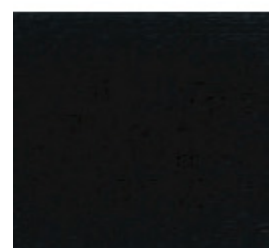
E



203465



MELANGE
841871



216140

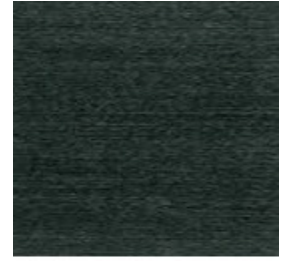
A



001205



028296



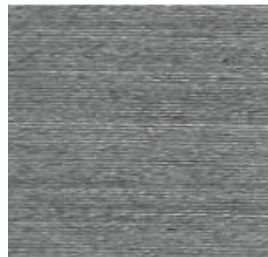
MELANGE
851162



B



MELANGE
841869



MELANGE
841007



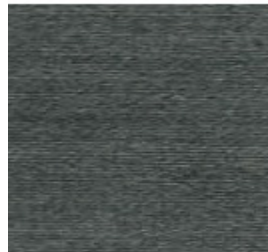
MELANGE
841091



C



MELANGE
841870



MELANGE
841020



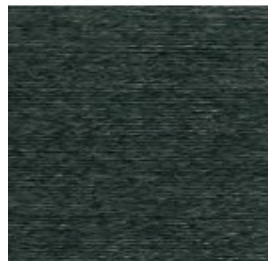
008800



D



MELANGE
840080



MELANGE
841040



MELANGE
841868



E



MELANGE
840286



MELANGE
841070



200123





Botto Peala

INDEX

| | | | | | | | | |
|---------|--------|-----|-----|--------|-----|-------------|--------|-----|
| ■ | 001205 | 10A | ■ | 028537 | 3A | | 216135 | 2E |
| ● ■ | 008800 | 12C | | 028666 | 3D | | 216136 | 6E |
| SABLÉ ■ | 017136 | 4E | ■ | 028669 | 6C | | 216140 | 9E |
| SABLÉ | 017140 | 3E | ■ | 074781 | 8D | | 217046 | 2A |
| SABLÉ | 017418 | 1E | ● ■ | 200123 | 12E | | 217047 | 2B |
| | 027087 | 9D | ● ■ | 200124 | 1A | | 217048 | 7A |
| | 027123 | 9A | | 201854 | 8B | | 217049 | 7D |
| | 027132 | 5A | | 203465 | 7E | MELANGE ● ■ | 840080 | 10D |
| | 027573 | 5E | | 204432 | 9B | MELANGE ● ■ | 840286 | 10E |
| | 027815 | 1C | | 204993 | 5C | MELANGE ■ | 840813 | 1D |
| | 028014 | 9C | | 206214 | 8C | MELANGE ■ | 841007 | 11B |
| | 028123 | 4D | ■ | 207289 | 7C | MELANGE ● ■ | 841020 | 11C |
| | 028155 | 2D | | 208382 | 6A | MELANGE ● ■ | 841040 | 11D |
| | 028293 | 3C | | 210335 | 4C | MELANGE ● ■ | 841070 | 11E |
| ■ | 028296 | 11A | | 211831 | 2C | MELANGE ● ■ | 841091 | 12B |
| | 028317 | 5B | | 212016 | 4A | MELANGE ● ■ | 841868 | 12D |
| | 028340 | 8A | ■ | 212114 | 5D | MELANGE ● ■ | 841869 | 10B |
| | 028394 | 7B | | 216114 | 6B | MELANGE | 841870 | 10C |
| | 028479 | 3B | | 216115 | 6D | MELANGE ● ■ | 841871 | 8E |
| ● ■ | 028488 | 4B | | 216116 | 1B | MELANGE ● | 851162 | 12A |

■ GOLD NM. 2/48: COLORI DISPONIBILI/AVAILABLE COLOURS

● ■ GOLD NM. 2/80 - NM. 3/80: COLORI DISPONIBILI/AVAILABLE COLOURS