



Must SUPERGEELONG

Nm. 1/15 - Nm. 2/15
100% (WV) LANA BABY MERINO EXTRAFINE



IMPIEGO

Nm. 1/15 Rett. finezza 12 Cotton 21 - 24 gg 1 Capo
Nm. 2/15 Rett. finezza 7 1 Capo

QUANTITA OTTIMALI

Colori stock service: a partire da kg. 1.
Collo ideale: kg. 24 circa.
Supplementi per colli di peso inferiore.
Colori tinti in matassa: kg. 6 - 16 - 30 - 36 - 48 - 55 - 63 - 84 - 125 - 250.
Colori a campione tinti in fiocco: kg 250 minimo.

Si possono ritorcere in Nm. 2/15, con multipli di kg. 2, tutti i colori della cartella.

Must SUPERGEELONG MOULINÉ

Nm. 2/15 - Nm. 3/15
100% (WV) LANA BABY MERINO EXTRAFINE



IMPIEGO

Nm. 2/15 Rett. finezza 7 1 Capo
Nm. 3/15 Rett. finezza 5 1 Capo

QUANTITA OTTIMALI PER MOULINÉ

Oltre ai colori di cartella, possono essere realizzate altre combinazioni attingendo dai colori Supergeelong.
Minimi: multipli di kg. 2 o 3, a seconda del filato.

Supplementi: saranno applicati come previsto dalle nostre condizioni generali di vendita.

Date le caratteristiche di questi filati, consigliamo di lavorarli utilizzando due o più guidafile.

FINISSAGGIO

Dettagli di finissaggio sono disponibili su richiesta.

SOLIDITA COLORI

CONFORMITÀ NORMATIVA REACH.
CONFORMITÀ NORMATIVA GB 18401
(Categoria B: prodotti a contatto diretto con la pelle)
PER USO IN RIGATO CON COLORI CONTRASTANTI
RICHIEDERE SOLIDITA' SPECIFICA PER RIGATURA.
Eventuali esigenze particolari andranno specificate all'atto dell'ordine.

Must SUPERGEELONG

Nm. 1/15 - Nm. 2/15
100% (WV) EXTRAFINE BABY MERINO WOOL



KNITTING

Nm. 1/15 Flat machine 12 Cotton 21 - 24 gg 1 Ply
Nm. 2/15 Flat machine 7 1 Ply

IDEAL QUANTITIES

Stock service colours: starting from kg. 1 each.
Standard box: approximately kgs. 24.
Surcharge for cartons of inferior weight.
Hank dyed solid shades: kgs. 6 - 16 - 30 - 36 - 48 - 55 - 63 - 84 - 125 - 250.
Fiber dyed colours on request: minimum kgs. 250.

All colours of this card, can be twisted in Nm. 2/15, with multiples of 2 kgs.

Must SUPERGEELONG MOULINÉ

Nm. 2/15 - Nm. 3/15
100% (WV) BABY EXTRAFINE MERINO WOOL



KNITTING

Nm. 2/15 Flat machine 7 1 Ply
Nm. 3/15 Flat machine 5 1 Ply

IDEAL QUANTITIES FOR MOULINÉ

In addition to the colours displayed in our colour card, other combinations can be made, choosing from our Supergeelong colours.
Minimum: multiples of kgs. 2 or 3, depending on count.

Surcharges: will be added according to our general sales conditions.

In order to get the best from these yarns, we suggest to knit them using two or several feeders.

FINISHING

Finishing details are available on request.

COLOURS FASTNESS

REACH REGULATION.
GB 18401 REGULATION COMPLIANCE
(Category B: products directly in contact with the skin)
IN CASE OF STRIPED OR CONTRAST KNITWEAR A SPECIFIC DYEING FASTNESS MUST BE ASKED.
Any other special need should be expressly requested.



Associazione Tessile e Salute
I nostri articoli soddisfano tutti i requisiti di Tessile e Salute.
Zegna Baruffa Lane Borgosesia partecipa al progetto Tessile e Salute sostenuto dal Ministero della Salute.
www.tessileesalute.it

Certificato n° 14900021



Traceability & Fashion

Codice di tracciabilità n° CTC0057A



Tested for harmful substances according to Oeko-Tex® Standard 100 993654.0 CENTROCOT





1

2

3

A



852015
Melange



711791
Melange



852016
Melange

B



711831



850264
Melange



849421
Melange

C



841665
Melange



841435
Melange



849641
Melange

D



841436
Melange



841901
Melange



841891
Melange

E



860054
Melange



849625



849642
Melange



4

5

6

A



841455



711448
Melange



841422
Melange

B



852445
Melange



840602
Melange



711788
Melange

C



852447
Melange



852017
Melange



841899
Melange

D



841420
Melange

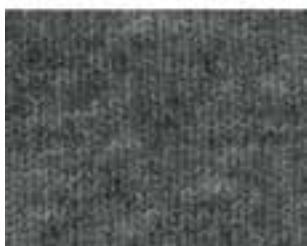


841439
Melange



711012
Melange

E



711011
Melange



711794
Melange



711214
Melange



7

8

9

A



852446
Melange



711517



711787
Melange

B



840312
Melange



850838
Melange



711784
Melange

C



841424
Melange



711681
Melange



850262
Melange

D



840357
Melange



841740
Melange



849634

E



841981



853146
Melange



840505
Melange



10

11

12

A



860048
Melange



850850
Melange



201184

B



718903



711702
Melange



781754

C



711737
Melange



841457
Melange



841914
Melange

D



860055
Melange



851241
Melange



841908
Melange

E



711741
Melange



841786
Melange



852020
Melange



13

14

15

A



860053
Melange



204541



711757
Melange

B



841912
Melange



711748
Melange



850961
Melange

C



850907
Melange



841905
Melange



201181

D



028654



841907
Melange



711803
Melange

E



781740



849628



711820



16

17

18

A



711695
Melange



841679
Melange



841923
Melange

B



213408



841546
Melange



851244
Melange

C



850037



711767



841595
Melange

D



841534
Melange



850960
Melange



841739
Melange

E



849644



204609



841590
Melange



19

20

21

A



841656
Melange



711380



849621
Melange

B



711663
Melange



851242
Melange



443416
Melange

C



711833



849650



850931
Melange

D



860051
Melange



201219
Melange



711665
Melange

E



711754
Melange



711785
Melange



851977



22

23

24

A



851243
Melange



781742



711636
Melange

B



841934
Melange



781730



841728
Melange

C



850845
Melange

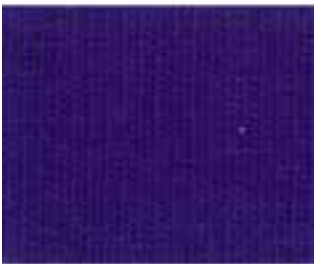


841749
Melange



852024
Melange

D



821423



849647



852021
Melange

E



027986



711031



711191

	1	2	3
A	 860155	 852313	 831658
B	 852765	 831654	 831659
C	 831651	 831657	 831660
D	 831652	 831655	 831661
E	 831653	 831656	 831662

4

5

6

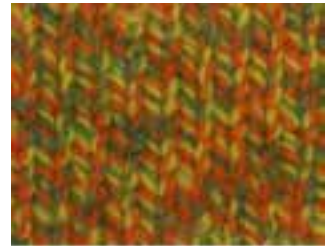
A



831685



831675



831680

B



831686



831676

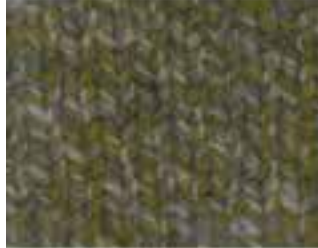


831681

C



831687



831677

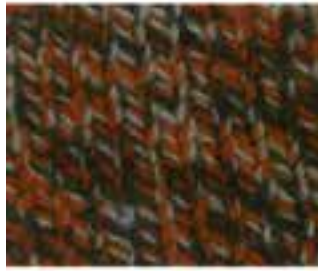


831682

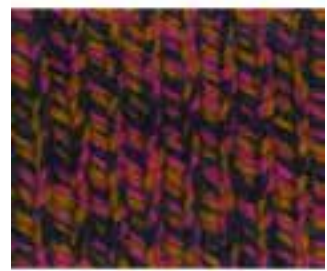
D



831688



831678



831683

E



831690



831679



831684

SUPERGEELONG
INDEX

	027986	22E		781730	23B		Melange	849421	3B
	028654	13D		781740	13E		Melange	849621	21A
	201181	15C		781742	23A			849625	2E
	201184	12A		781754	12B			849628	14E
Melange	201219	20D		821423	22D			849634	9D
	204541	14A	Melange	840312	7B		Melange	849641	3C
	204609	17E	Melange	840357	7D		Melange	849642	3E
	213408	16B	Melange	840505	9E			849644	16E
Melange	443416	21B	Melange	840602	5B			849647	23D
Melange	711011	4E	Melange	841420	4D			849650	20C
Melange	711012	6D	Melange	841422	6A			850037	16C
	711031	23E	Melange	841424	7C		Melange	850262	9C
	711191	24E	Melange	841435	2C		Melange	850264	2B
Melange	711214	6E	Melange	841436	1D		Melange	850838	8B
	711380	20A	Melange	841439	5D		Melange	850845	22C
Melange	711448	5A		841455	4A		Melange	850850	11A
	711517	8A	Melange	841457	11C		Melange	850907	13C
Melange	711636	24A	Melange	841534	16D		Melange	850931	21C
Melange	711663	19B	Melange	841546	17B		Melange	850960	17D
Melange	711665	21D	Melange	841590	18E		Melange	850961	15B
Melange	711681	8C	Melange	841595	18C		Melange	851241	11D
Melange	711695	16A	Melange	841656	19A		Melange	851242	20B
Melange	711702	11B	Melange	841665	1C		Melange	851243	22A
Melange	711737	10C	Melange	841679	17A		Melange	851244	18B
Melange	711741	10E	Melange	841728	24B			851977	21E
Melange	711748	14B	Melange	841739	18D		Melange	852015	1A
Melange	711754	19E	Melange	841740	8D		Melange	852016	3A
Melange	711757	15A	Melange	841749	23C		Melange	852017	5C
	711767	17C	Melange	841786	11E		Melange	852020	12E
Melange	711784	9B	Melange	841891	3D		Melange	852021	24D
Melange	711785	20E	Melange	841899	6C		Melange	852024	24C
Melange	711787	9A	Melange	841901	2D		Melange	852445	4B
Melange	711788	6B	Melange	841905	14C		Melange	852446	7A
Melange	711791	2A	Melange	841907	14D		Melange	852447	4C
Melange	711794	5E	Melange	841908	12D		Melange	853146	8E
Melange	711803	15D	Melange	841912	13B		Melange	860048	10A
	711820	15E	Melange	841914	12C		Melange	860051	19D
	711831	1B	Melange	841923	18A		Melange	860053	13A
	711833	19C	Melange	841934	22B		Melange	860054	1E
	718903	10B		841981	7E		Melange	860055	10D

SUPERGEELONG MOULINÉ
INDEX

831651	1C	831661	3D	831683	6D
831652	1D	831662	3E	831684	6E
831653	1E	831675	5A	831685	4A
831654	2B	831676	5B	831686	4B
831655	2D	831677	5C	831687	4C
831656	2E	831678	5D	831688	4D
831657	2C	831679	5E	831690	4E
831658	3A	831680	6A	852313	2A
831659	3B	831681	6B	852765	1B
831660	3C	831682	6C	860155	1A