



MO-AIR

Nm. 3200

42% (WV) LANA MERINO EXTRAFINE (19,5 µ)
41% (WM) MOHAIR
17% (PA) POLIAMMIDE



IMPIEGO

Rettilinea Finezza 3-5 1 Capo

Trattandosi di un filato fantasia, è necessario considerare uno scarto macchina superiore ad un filato lineare. Si consiglia di lavorare a due o più guidafile.

FINISSAGGIO

Dettagli di finissaggio sono disponibili su richiesta.

QUANTITÀ OTTIMALI

● Colori disponibili: a partire da 1 kg.
Collo ideale kg. 20 circa
Supplementi per colli di peso inferiore.
Colori a campione, tinti in matassa:
kg. 6-16-30-42-63-84-126-252

COLORI UNITI

Su richiesta si possono tingere colori uniti. Sono necessarie prove preventive di tessitura e finissaggio per verificare che i capi soddisfino i requisiti richiesti; sui colori uniti si riscontra, infatti, una minore gonfiezza rispetto ai colori tinto tops di cartella.

KIDFUR

Nm. 3000

50% (WM) MOHAIR
47% (WV) LANA MERINO EXTRAFINE
3% (PA) POLIAMMIDE

IMPIEGO

Rettilinea Finezza 5 1 Capo

Per ottenere buoni risultati è necessario operare con le tensioni dei guidafile al minimo possibile, regolando la chiusura della maglia in modo da non sollecitare troppo il filato.

QUANTITÀ OTTIMALI

● Colori disponibili: a partire da 1 kg.
Collo ideale kg. 20 circa
Supplementi per colli di peso inferiore.
Colori melanges a campione 200 kg.
Colori a campione tinti in matassa:
kg. 6-16-30-42-63-84-126-252

FINISSAGGIO

Dettagli di finissaggio sono disponibili su richiesta.

SOLIDITÀ COLORI:

CONFORMITÀ NORMATIVA REACH
CONFORMITÀ NORMATIVA GB 18401
(Categoria B: prodotti a contatto diretto con la pelle)
PER USO IN RIGATO CON COLORI CONTRASTANTI
RICHIEDERE SOLIDITÀ SPECIFICA.

Eventuali esigenze particolari andranno specificate all'atto dell'ordine.

MO-AIR

Nm. 3200

42% (WV) EXTRAFINE MERINO WOOL (19,5 µ)
41% (WM) MOHAIR
17% (PA) POLYAMIDE



KNITTING

Flat Machine 3-5 1 Ply

Due to the nature of the fancy yarns it is necessary to consider a greater wastage than classic yarns. It is advisable to knit using more than one yarn guides.

FINISHING

Finishing details are available on request.

IDEAL QUANTITIES

● Available colours: starting from 1 Kg. each
Standard box approximately kgs. 20
Surcharge for cartons of inferior weight.
Custom, hank dyed, solid shades:
kgs. 6-16-30-42-63-84-126-252

SOLID COLOURS

Plain colours can be dyed on request. Preliminary knitting and finishing tests are necessary to verify if the garments meet customer requirements; dyeing plain colours results in yarn that is less bulky compared to top-dyed colours.

KIDFUR

Nm. 3000

50% (WM) MOHAIR
47% (WV) EXTRAFINE MERINO WOOL
3% (PA) POLYAMIDE

KNITTING

Flat Machine 5 1 Ply

To obtain best results knit using lowest tension of yarn-guides. Find machine regulation that does not pull the yarn too much during knitting.

IDEAL QUANTITIES

● Available colours: starting from 1 Kg. each
Standard box approximately kgs. 20
Surcharge for cartons of inferior weight.
Custom melanges colours 200kg.
Hank dyed solid shades:
kgs. 6-16-30-42-63-84-126-252

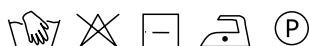
FINISHING

Finishing details are available on request.

COLOURS FASTNESS:

REACH REGULATION
GB 18401 REGULATION COMPLIANCE
(Category B: products directly in contact with the skin)
IN CASE OF STRIPED OR CONTRAST KNITWEAR A SPECIFIC DYEING FASTNESS MUST BE ASKED.

Any other special need should be expressly requested.





BEAVER

Nm. 1650

53% (WM) MOHAIR

30% (WV) LANA MERINO EXTRAFINE (19,5 µ)

17% (SE) SETA

IMPIEGO

Rettilezza Finezza 2,5

1 Capo

Trattandosi di un filato fantasia, è necessario considerare uno scarto macchina superiore ad un filato lineare.

Si consiglia di lavorare a due o più guidafile.

FINISSAGGIO

Dettagli di finissaggio sono disponibili su richiesta.

QUANTITÀ OTTIMALI

● Colori disponibili: a partire da 1 kg.

Collo ideale Kg. 20 circa

Supplementi per colli di peso inferiore.

Colori uniti o a campione, tinti in matassa:

kg. 6-16-30-42-63-84-126-252

Colori melange a campione Kg. 200

SOLIDITÀ COLORI:

CONFORMITÀ NORMATIVA REACH

CONFORMITÀ NORMATIVA GB 18401

(Categoria B: prodotti a contatto diretto con la pelle)

PER USO IN RIGATO CON COLORI CONTRASTANTI

RICHIEDERE SOLIDITÀ SPECIFICA.

Eventuali esigenze particolari andranno specificate all'atto dell'ordine.

BEAVER

Nm. 1650

53% (WM) MOHAIR

30% (WV) EXTRAFINE MERINO WOOL (19,5 µ)

17% (SE) SILK

KNITTING

Flat Machine 2,5

1 Ply

Due to the nature of the fancy yarns it is necessary to consider a greater wastage than classic yarns.

It is advisable to knit using more than one yarn guides.

FINISHING

Finishing details are available on request.

IDEAL QUANTITIES

● Available colours: starting from 1 Kg. each

Standard box approximately kgs. 20

Surcharge for cartons of inferior weight.

Custom, hank dyed, solid shades:

kgs. 6-16-30-42-63-84-126-252

Custom melange colours kg. 200

COLOURS FASTNESS:

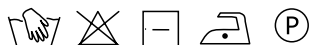
REACH REGULATION

GB 18401 REGULATION COMPLIANCE

(Category B: products directly in contact with the skin)

IN CASE OF STRIPED OR CONTRAST KNITWEAR A SPECIFIC DYEING FASTNESS MUST BE ASKED.

Any other special need should be expressly requested.



INDEX

MO-AIR	099070 10E	620013 1D	● 620025 7A	● 621772 1E	630142 7E
	● 620000 1A	620014 4E	● 620027 4D	● 621775 4B	630143 7B
	620011 1B	● 620017 4C	620028 10B	621776 7C	630144 4A
	● 620012 1C	620024 10A	● 620029 10C	630141 10D	630307 7D
KIDFUR	008800 11E	029079 8D	● 500001 2B	630994 8C	630999 11D
	029075 5A	029085 2E	500002 8A	630995 5B	● 631000 8E
	029076 8B	● 029086 5E	● 630989 2C	630996 2D	631001 11A
	029078 2A	029088 11B	630991 5C	630997 5D	● 631003 11C
BEAVER	● 008800 12D	029107 6A	029118 3E	029281 9B	● 631007 6D
	029083 9C	● 029110 3A	029119 6C	099070 12E	631008 12A
	029105 3C	029111 12B	029120 6B	● 631005 9A	● 631009 9E
	029106 6E	029114 3B	029123 9D	● 631006 3D	631010 12C



Associazione Tessile e Salute

I nostri articoli soddisfano tutti i requisiti di Tessile e Salute.

Zegna Baruffa Lane Borgosesia partecipa al progetto

Tessile e Salute sostenuto dal Ministero della Salute.

www.tessileesalute.it

Certificato n° 14900021



ID Nr. 4S-100277

visit 4sustainability.it



MO-AIR

KIDFUR

BEAVER

1

2

3

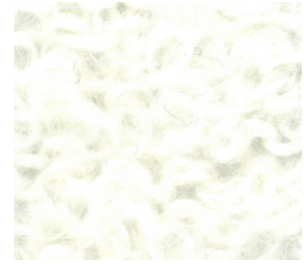
A



620000



029078



029110



B



620011



500001



029114

C



620012



630989



029105

D



620013



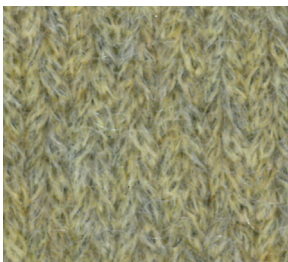
630996



631006



E



621772



029085



029118

MO-AIR

KIDFUR

BEAVER

4

5

6

A



630144



029075

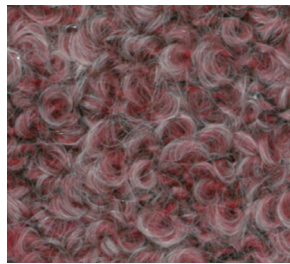


029107

B



621775

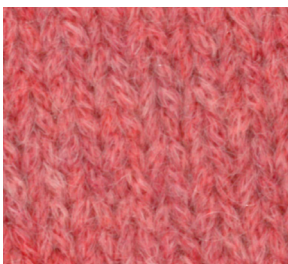


630995



029120

C



620017



630991



029119

D



620027



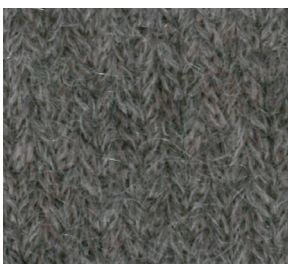
630997



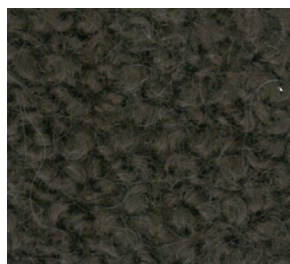
631007



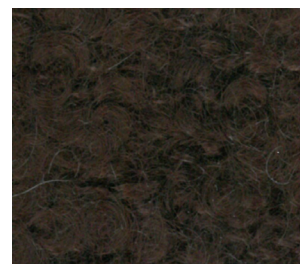
E



620014



029086



029106

MO-AIR

KIDFUR

BEAVER

7

8

9

A



620025



500002



631005



B



630143



029076



029281

C



621776



630994

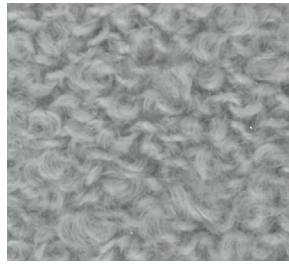


029083

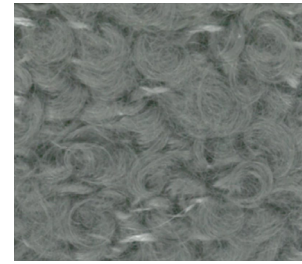
D



630307



029079



029123

E



630142



631000



631009



MO-AIR

KIDFUR

BEAVER

10

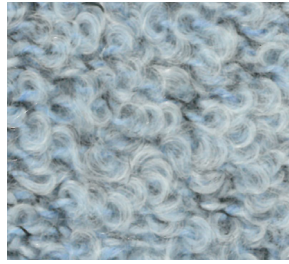
11

12

A



620024



631001



631008

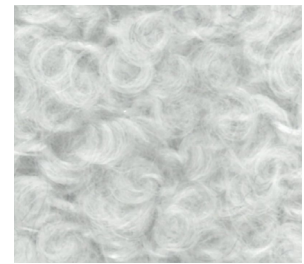
B



620028

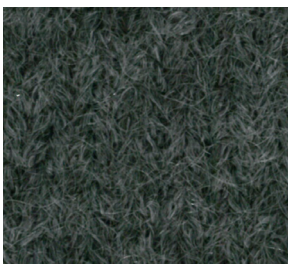


029088



029111

C



620029



631003



631010

D



630141



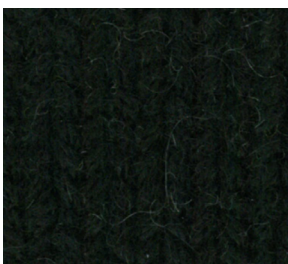
630999



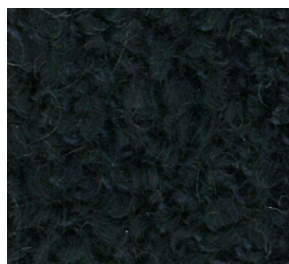
008800



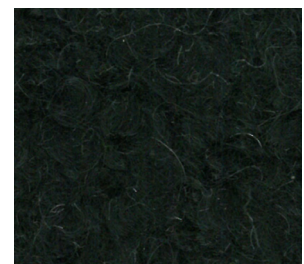
E



099070



008800



099070