



MUSK

Nm. 2800

93% (WV) LANA MERINO EXTRAFINE
7% (PA) POLIAMMIDE

IMPIEGO

Rettilinea Finezza 5-3 1 Capo

Trattandosi di un filato fantasia, è necessario considerare uno scarto macchina superiore ad un filato lineare. Si consiglia di lavorare a due o più guidafili.

MALLOW

Nm. 1600

96% (WV) LANA MERINO EXTRAFINE
4% (PA) POLIAMMIDE

IMPIEGO

Rettilinea Finezza 3 1 Capo

Trattandosi di un filato fantasia, è necessario considerare uno scarto macchina superiore ad un filato lineare. Si consiglia di lavorare a due o più guidafili.

PONY

Nm. 1400

93% (WV) LANA MERINO EXTRAFINE
7% (PA) POLIAMMIDE

IMPIEGO

Rettilinea Finezza 3 1 Capo

Trattandosi di un filato fantasia, è necessario considerare uno scarto macchina superiore ad un filato lineare. Si consiglia di lavorare a due o più guidafili.

FINISSAGGIO

Dettagli di finissaggio sono disponibili su richiesta.

QUANTITÀ OTTIMALI

● Colori disponibili: a partire da 1 Kg.
Collo ideale Kg. 20 circa
Supplementi per colli di peso inferiore.
Colori a campione minimo: Kg. 24

SOLIDITÀ COLORI:

CONFORMITÀ NORMATIVA REACH
CONFORMITÀ NORMATIVA GB 18401

(Categoria B: prodotti a contatto diretto con la pelle)

PER USO IN RIGATO CON COLORI CONTRASTANTI
RICHIEDERE SOLIDITÀ SPECIFICA.

Eventuali esigenze particolari andranno specificate all'atto dell'ordine.

MUSK

Nm. 2800

93% (WV) EXTRAFINE MERINO WOOL
7% (PA) POLYAMIDE

KNITTING

Flat Machine 5-3 1 Ply

Due to the nature of the fancy yarns it is necessary to consider a greater wastage than classic yarns. It is advisable to knit using more than one yarn guides.

MALLOW

Nm. 1600

96% (WV) EXTRAFINE MERINO WOOL
4% (PA) POLYAMIDE

KNITTING

Flat Machine 3 1 Ply

Due to the nature of the fancy yarns it is necessary to consider a greater wastage than classic yarns. It is advisable to knit using more than one yarn guides.

PONY

Nm. 1400

93% (WV) EXTRAFINE MERINO WOOL
7% (PA) POLYAMIDE

KNITTING

Flat Machine 3 1 Ply

Due to the nature of the fancy yarns it is necessary to consider a greater wastage than classic yarns. It is advisable to knit using more than one yarn guides.

FINISHING

Finishing details are available on request.

IDEAL QUANTITIES

● Available colours: starting from 1 Kg. each.
Standard box approximately kgs. 20
Surcharge for cartons of inferior weight.
Minimum for custom colours: Kgs. 24

COLOURS FASTNESS:

REACH REGULATION
GB 18401 REGULATION COMPLIANCE

(Category B: products directly in contact with the skin)

IN CASE OF STRIPED OR CONTRAST KNITWEAR A
SPECIFIC DYEING FASTNESS MUST BE ASKED.

Any other special need should be expressly requested.



Associazione Tessile e Salute

I nostri articoli soddisfano tutti i requisiti di Tessile e Salute.
Zegna Baruffa Lane Borgosesia partecipa al progetto
Tessile e Salute sostenuto dal Ministero della Salute.

www.tessileesalute.it

Certificato n° 14900021



ID Nr. 4S-100277
visit 4sustainability.it



MUSK

MALLOW

PONY

1

2

3

A



630801



548481



630986

B



630855



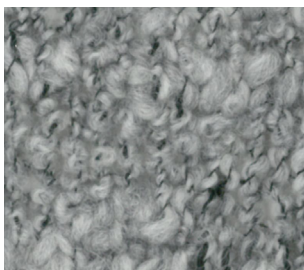
548479



630955



C



630830



548480



630838



D



630824



548482



630845



E



630833



548484



630956

MUSK

MALLOW

PONY

4

5

6

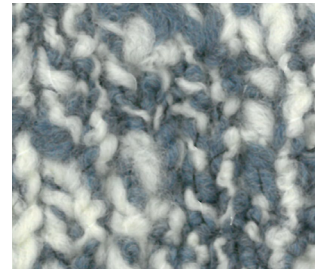
A



630798



548486



630975

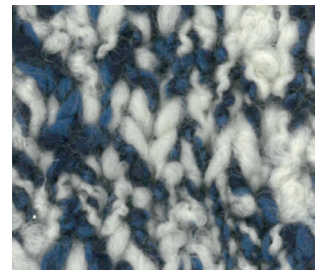
B



630818



548489

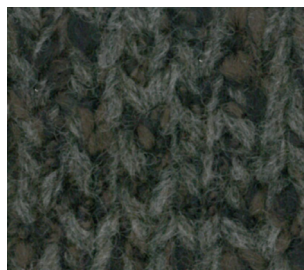


630977

C



630802

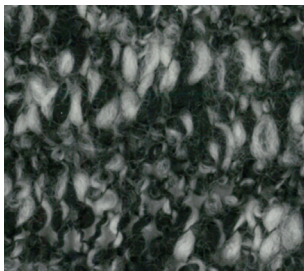


548491



630976

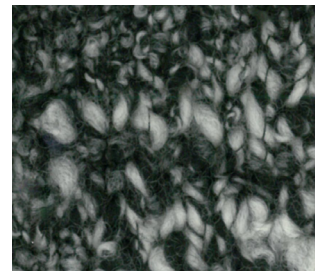
D



630703



548533

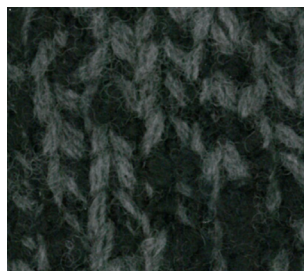


630703

E



099070



548492



099070



MUSK

7

MALLOW

8

PONY

9

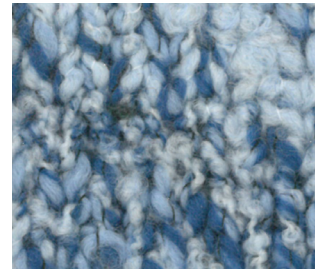
A



630797

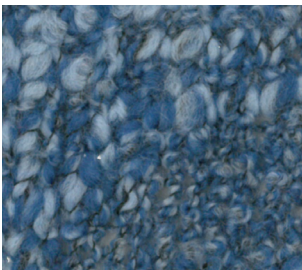


548525



630960

B



630821

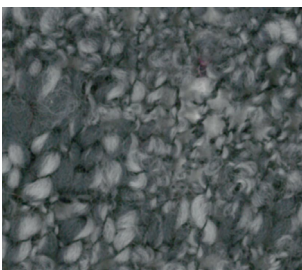


548523



630962

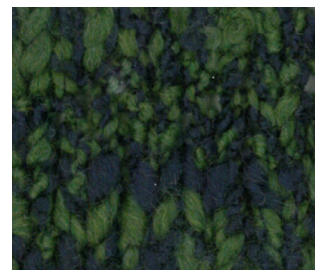
C



630819

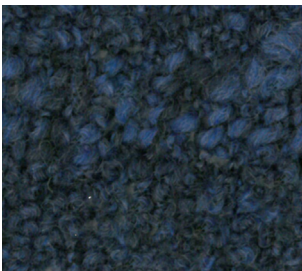


548524



630961

D



630831

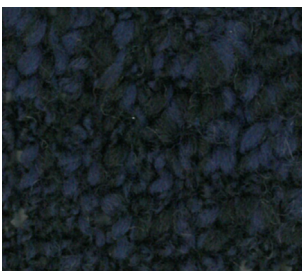


548526

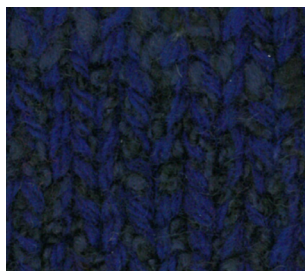


630844

E



630823



548522



630759

MUSK

MALLOW

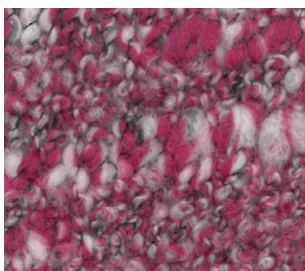
PONY

10

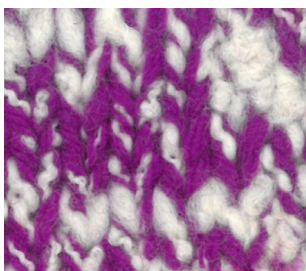
11

12

A



630827



548532

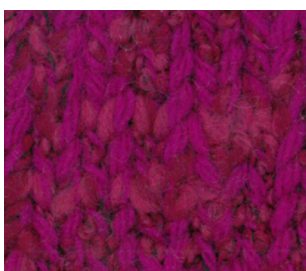


630974

B



630828

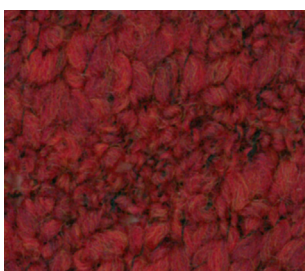


548520

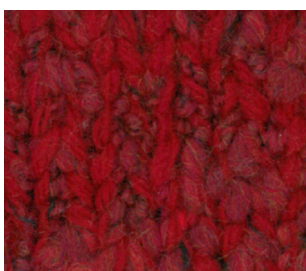


630850

C



630835



548519



630835

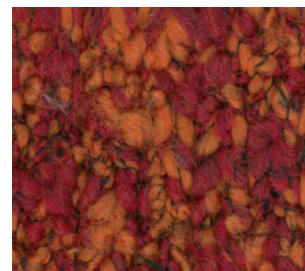
D



630804

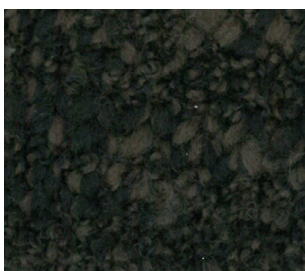


548521

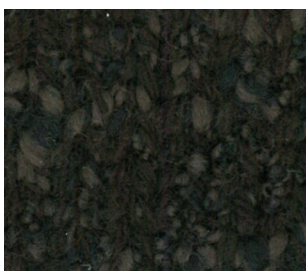


630958

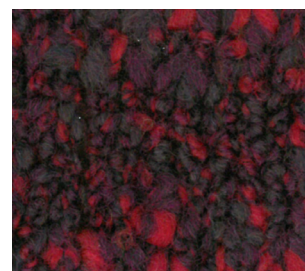
E



630826



548490



631033

INDEX

MUSK	● 099070 4E	630802 4C	630823 7E	● 630830 1C
	630703 4D	630804 10D	● 630824 1D	630831 7D
	630797 7A	● 630818 4B	● 630826 10E	● 630833 1E
	630798 4A	630819 7C	630827 10A	630835 10C
	● 630801 1A	● 630821 7B	630828 10B	● 630855 1B
MALLOW	548479 2B	548486 5A	548519 11C	548524 8C
	548480 2C	548489 5B	548520 11B	548525 8A
	● 548481 2A	● 548490 11E	548521 11D	548526 8D
	548482 2D	548491 5C	548522 8E	548532 11A
	548484 2E	548492 5E	548523 8B	● 548533 5D
PONY	● 099070 6E	● 630844 9D	630958 12D	630975 6A
	630703 6D	● 630845 3D	630960 9A	630976 6C
	630759 9E	630850 12B	630961 9C	630977 6B
	630835 12C	● 630955 3B	630962 9B	630986 3A
	● 630838 3C	630956 3E	630974 12A	631033 12E