



GELSOMINO

Nm. 24000

64% (LI) LINO

36% (VI) VISCOSA

● Colori disponibili

IMPIEGO

Rettilinea Finezza 14-16 Cotton 27-30-33 GG 1 Capo

FINISSAGGIO

Dettagli di finissaggio e scheda tecnica sono disponibili su richiesta.

QUANTITÀ OTTIMALI

Colori disponibili: a partire da 1 Kg

Collo ideale: Kg 20

Supplementi per colli di peso inferiore.

Colori uniti non stock service o a campione:

Kg. 6-12-18-30-36-48-55-60-72-100-120-132-144-250

Supplementi: saranno applicati come previsto dalle nostre condizioni generali di vendita.

NOTA

Il lino per sua stessa natura presenta peculiarità del tutto speciali; potrebbe manifestare differenze di colore fra le partite di greggio, dando origine a scarsa uniformità di tonalità fra le forniture. Data la particolare mista di questo filo, non tutti i toni possono essere riprodotti fedelmente. È possibile, in alcuni casi, che si manifesti un leggero effetto melange. Una superficie leggermente irregolare è caratteristica propria del lino. A causa della sua naturale "rigidità", inoltre, il lino può evidenziare spirality nella maglia rasata dopo il lavaggio in acqua. Sono quindi necessarie prove preventive di tessitura e finissaggio per verificare che i capi possiedano i requisiti richiesti.

SOLIDITÀ COLORI:

DATA LA COMPOSIZIONE DEL FILATO LE SOLIDITÀ GB 18401 (CINA) NON SONO GARANTITE.

QUESTI VALORI NON GARANTISCONO L'UTILIZZO IN RIGATO, SPECIALMENTE PER I FORTI CONTRASTI.

Eventuali esigenze particolari dovranno essere specificate all'atto dell'ordine.

Qualora venga confermato un difetto del filo, non saranno riconosciuti danni per quantità smacchinate oltre il 10% in peso della quantità consegnata.

GELSOMINO

Nm. 24000

64% (LI) LINEN

36% (VI) VISCOSE

● Available colours

KNITTING

Flat machine 14-16 Cotton 27-30-33 GG 1 Ply

FINISHING

Finishing and product technical details are available on request.

IDEAL QUANTITIES

Available colours: starting from 1 kg. each

Ideal box: approximately kgs. 20

Surcharge for cartons of inferior weight

Non stock service or custom solid colours.

Kg. 6-12-18-30-36-48-55-60-72-100-120-132-144-250

Surcharges: will be added according to our general sales conditions.

NOTE

Linen, by its very nature, reveals very special peculiarities; the colour of raw white yarn can vary from lot to lot and therefore cause slight colour difference among the lots supplied.

Due to the yarn special compositions, then, it may be difficult to exactly reproduce all requested shades. Occasionally a slight melange effect may appear.

A delicately uneven surface is one of linen's peculiarities.

In addition, due to linen natural "stiffness", spirality may appear on plain jersey when washed in water.

Preliminary testing on knitting and finishing is necessary to be sure that the garments meet your requirements.

COLOURS FASTNESS:

DUE TO THE YARN COMPOSITION THE GB 18401 (CINA) ARE NOT GUARANTEED.

SOME COLOURS MIGHT NOT BE SUITABLE FOR KNITTING STRIPES OR OTHER KNITTED PATTERN IF USING VERY CONTRASTING COLOURS.

Any other special fastness should be expressly requested.

If it's confirmed as a yarn defect, we will not accept any claims for any knitted quantity over 10% of the delivered weight.



Associazione Tessile e Salute

I nostri articoli soddisfano tutti i requisiti di Tessile e Salute.

Zegna Baruffa Lane Borgosesia partecipa al progetto Tessile e Salute sostenuto dal Ministero della Salute.

www.tessileesalute.it

Certificato n° 14900021



Zegna Baruffa Lane Borgosesia applica il Protocollo Chemical Management 4sustainability per l'eliminazione delle sostanze chimiche tossiche e nocive attraverso la MRSL ZDHC e in conformità con le linee guida dei brand.

www.4sustainability.it



Codice di tracciabilità n° CTC0057A



1

2

3

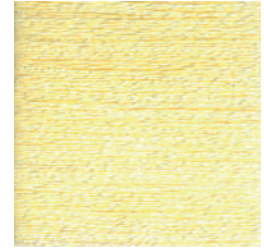
A



099054



001205

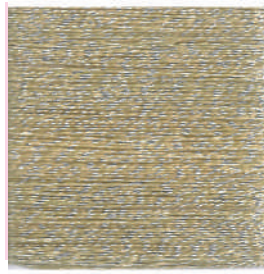


215212

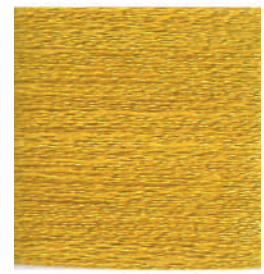
B



211924



290744

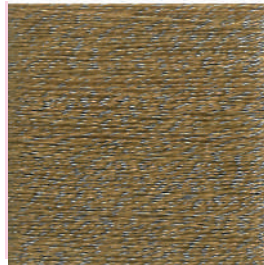


215213

C



215201



210522

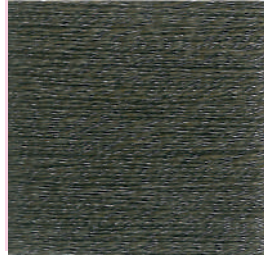


212199

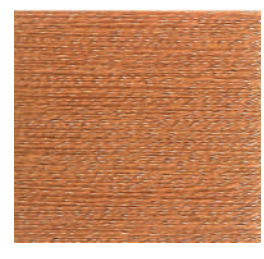
D



213412



215205



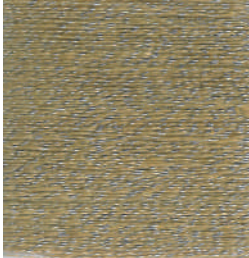
213408

4

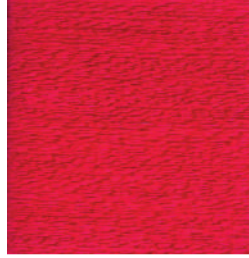
5

6

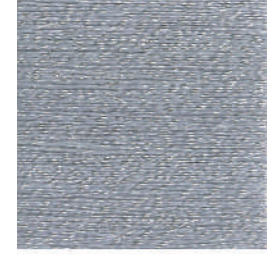
A



215209

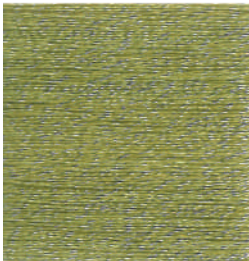


210527

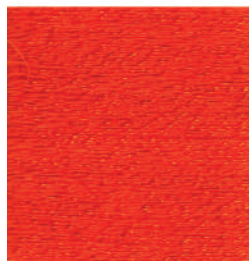


215230

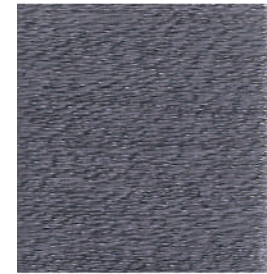
B



215215



215226

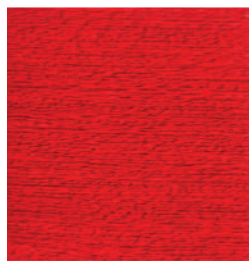


213561

C



215223

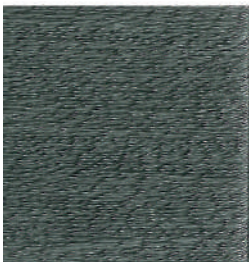


215227



210384

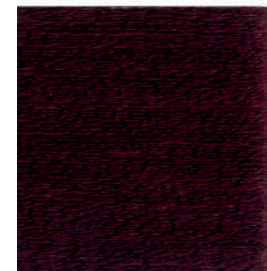
D



215216



211842



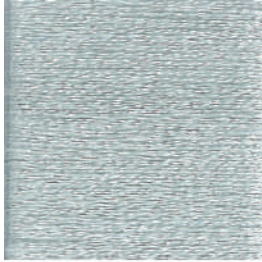
211913

7

8

9

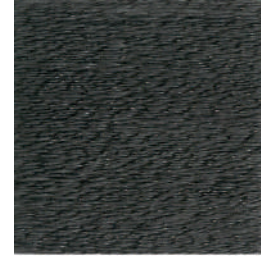
A



028184

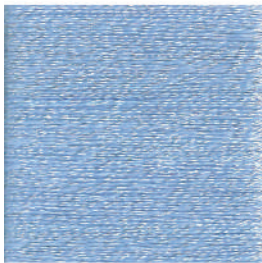


215214

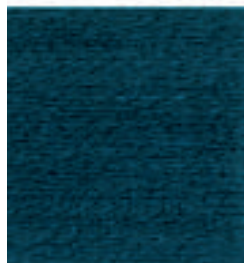


215206

B



215219

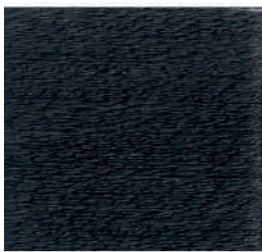


211917



215225

C



215224

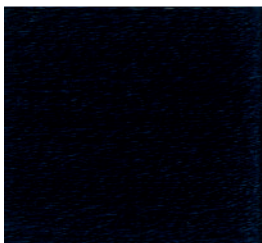


210559



008800 ●

D



212159



215207



099070 ●

INDEX

● 001205	2A	211842	5D	215201	1C	215216	4D
● 008800	9C	211913	6D	215205	2D	215219	7B
028184	7A	211917	8B	215206	9A	215223	4C
● 099054	1A	● 211924	1B	215207	8D	215224	7C
● 099070	9D	212159	7D	215209	4A	215225	9B
● 210384	6C	212199	3C	215212	3A	215226	5B
210522	2C	213408	3D	215213	3B	215227	5C
● 210527	5A	213412	1D	215214	8A	215230	6A
210559	8C	213561	6B	215215	4B	● 290744	2B

●: colori disponibili / available colours