



GHIBLI

Nm. 2/32

55% (WV) LANA MERINO EXTRAFINE
45% (CO) COTONE

● Colori disponibili

IMPIEGO

Rettilinea Finezza 12-14 Cotton 21-24-27 GG 1 Capo

FINISSAGGIO

Dettagli di finissaggio sono disponibili su richiesta.

QUANTITÀ OTTIMALI

Colori disponibili: a partire da 1 Kg
Collo ideale Kg. 24 circa
Supplementi per colli di peso inferiore.

Colori uniti tinti in matassa:

kg. 6-9-16-30-40-60-73-100-150-300

Colori uniti da componente:

kg. 24-48-72-120-240-480

Colori Melange:

a partire da kg. 24

Supplementi: saranno applicati come previsto dalle nostre condizioni generali di vendita.

SOLIDITÀ COLORI:

CONFORMITÀ NORMATIVA REACH
CONFORMITÀ NORMATIVA GB 18401

(Categoria B: prodotti a contatto diretto con la pelle)

PER USO IN RIGATO CON COLORI CONTRASTANTI
RICHIEDERE SOLIDITÀ SPECIFICA.

Eventuali esigenze particolari andranno specificate all'atto dell'ordine.

Qualora venga confermato un difetto del filo, non saranno riconosciuti danni per quantità smacchinate oltre il 10% in peso della quantità consegnata.

GHIBLI

Nm. 2/32

55% (WV) EXTRAFINE MERINO WOOL
45% (CO) COTTON

● Available colours

KNITTING

Flat Machine 12-14 F.F. Cotton 21-24-27 GG 1 Ply

FINISHING

Finishing details are available on request.

IDEAL QUANTITIES

Available colours: starting from 1 kg. each
Standard box approximately kgs. 24
Surcharge for cartons of inferior weight.

Hank dyed solid colours:

kgs. 6-9-16-30-40-60-73-100-150-300

Solid colours combined by component:

kgs. 24-48-72-120-240-480

Melange colours:

starting from 24 kgs. each

Surcharges: will be added according to our general sales conditions.

COLOURS FASTNESS:

REACH REGULATION
GB 18401 REGULATION COMPLIANCE

(Category B: products directly in contact with the skin)

IN CASE OF STRIPED OR CONTRAST KNITWEAR A SPECIFIC DYEING FASTNESS MUST BE ASKED.

Any other special need should be expressly requested.

If it's confirmed as a yarn defect, we will not accept any claims for any knitted quantity over 10% of the delivered weight.



Associazione Tessile e Salute

I nostri articoli soddisfano tutti i requisiti di Tessile e Salute.

Zegna Baruffa Lane Borgosesia partecipa al progetto Tessile e Salute sostenuto dal Ministero della Salute.

www.tessileesalute.it

Certificato n° 14900021



Zegna Baruffa Lane Borgosesia applica il Protocollo Chemical Management 4sustainability per l'eliminazione delle sostanze chimiche tossiche e nocive attraverso la MRSL ZDHC e in conformità con le linee guida dei brand.

www.4sustainability.it



Codice di tracciabilità n° CTC0057A



1

2

3

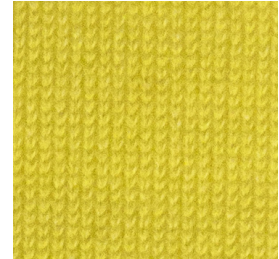
A



099054



541163 ●



541937

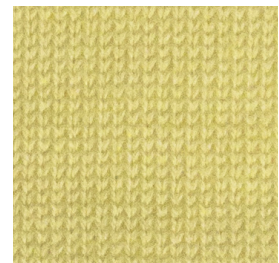
B



541298



541941 ■



541938

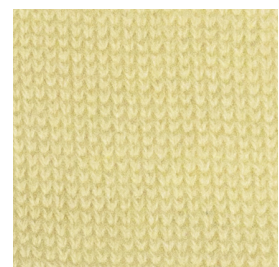
C



548420
Melange ●



541909 ■ ●



541381

D



548425
Melange



541483 ●



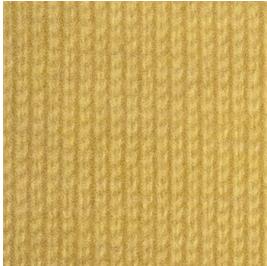
001205 ●

4

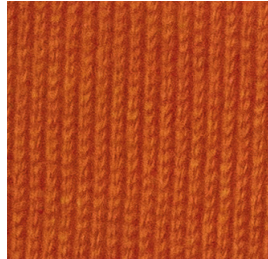
5

6

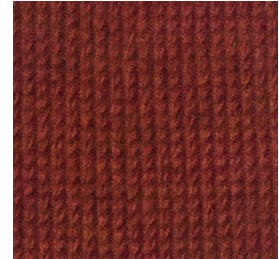
A



541111 ●

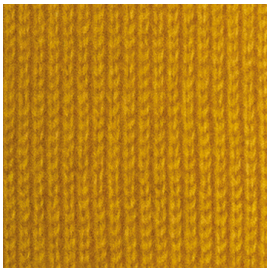


541943 ■

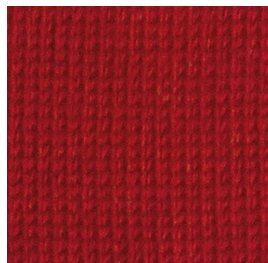


541013 ■

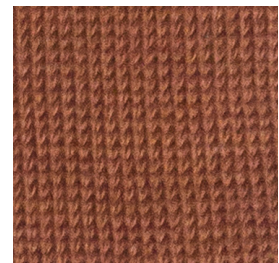
B



541942 ■



541944 ■

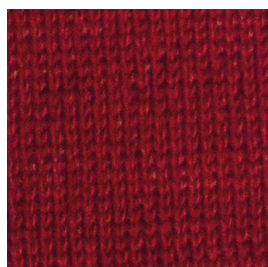


541468

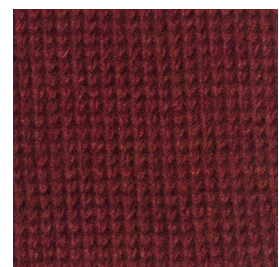
C



541467

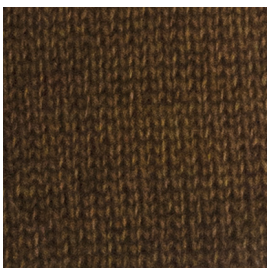


541914 ■

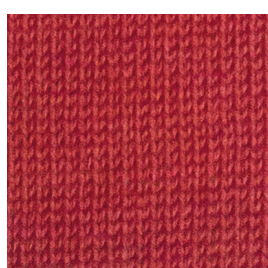


541535 ■

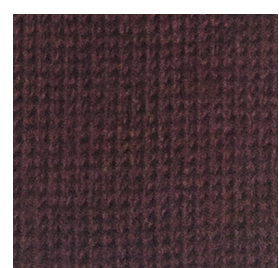
D



541475



541366 ■



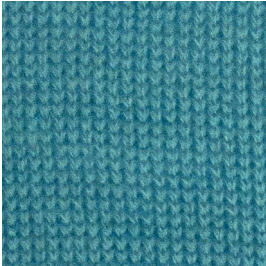
541912 ■ ●

7

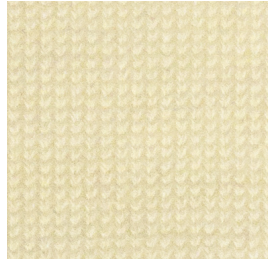
8

9

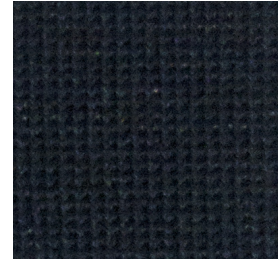
A



541945 ■



541939

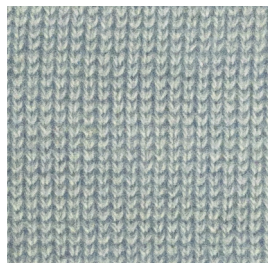


541905

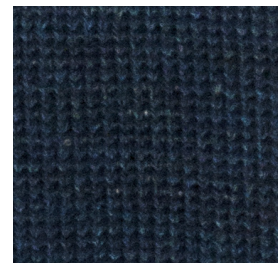
B



541946 ■

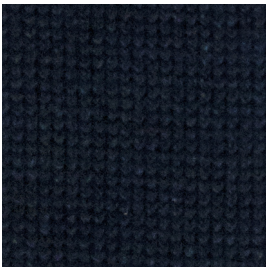


541940



548430
Melange

C



548424
Melange

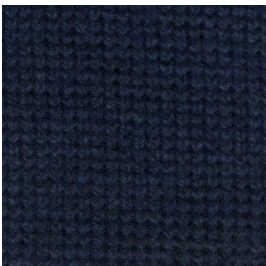


541947 ■



661824 ■
●

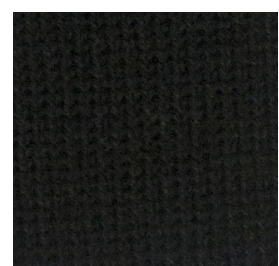
D



541329 ■



548432
Melange
●



661828 ■
●

10

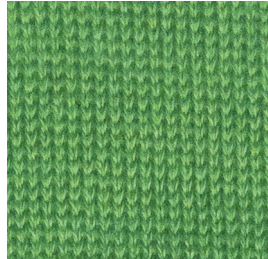
11

12

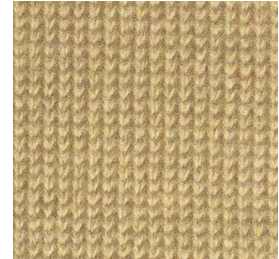
A



548423
Melange

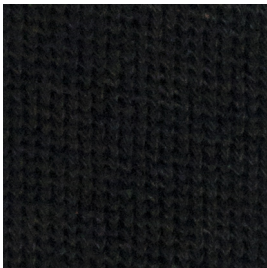


541948 ■



541524

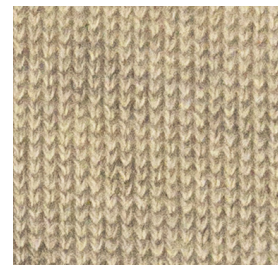
B



541910 ■

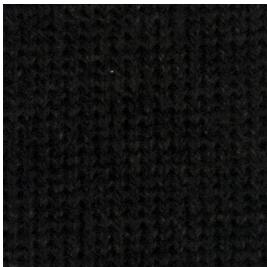


541949 ■



548421
Melange

C



548428
Melange



541913 ■
●

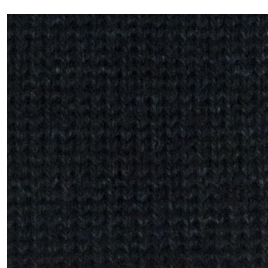


548426
Melange

D



548429
Melange



548431
Melange



548427
Melange

INDEX

● 001205	3D	● 541909	■ 2C	541948	■ 11A
099054	1A	541910	■ 10B	541949	■ 11B
541013	■ 6A	● 541912	■ 6D	● M 548420	1C
● 541111	4A	● 541913	■ 11C	M 548421	12B
● 541163	2A	541914	■ 5C	M 548423	10A
541298	1B	541937	3A	M 548424	7C
541329	■ 7D	541938	3B	M 548425	1D
541366	■ 5D	541939	8A	M 548426	12C
541381	3C	541940	8B	M 548427	12D
541467	4C	541941	■ 2B	M 548428	10C
541468	6B	541942	■ 4B	M 548429	10D
541475	4D	541943	■ 5A	M 548430	9B
● 541483	2D	541944	■ 5B	M 548431	11D
541524	12A	541945	■ 7A	● M 548432	8D
541535	■ 6C	541946	■ 7B	● 661824	■ 9C
541905	9A	541947	■ 8C	● 661828	■ 9D

M: Melange

●: colori disponibili / *available colours*

■: colori uniti da componente / *solid colours combined by component*