



SIDNEY

Nm. 2/46

55% (WV) LANA MERINO EXTRAFINE
40% (CO) COTONE
5% (WS) CASHMERE

● Colori disponibili

IMPIEGO

Rettilinea Finezza 14-16 Cotton 27-30-33 GG 1 Capo

FINISSAGGIO

Dettagli di finissaggio sono disponibili su richiesta.

QUANTITÀ OTTIMALI

Colori melange: a partire da Kg. 24
Supplementi per colli di peso inferiore.
Colori tinti in matassa:
kg. 6-12-16-30-36-48-55-60-72-100-120-132-144-250

Supplementi: saranno applicati come previsto dalle nostre condizioni generali di vendita.

SOLIDITÀ COLORI:

CONFORMITÀ NORMATIVA REACH
CONFORMITÀ NORMATIVA GB 18401
(Categoria B: prodotti a contatto diretto con la pelle)

PER USO IN RIGATO CON COLORI CONTRASTANTI
RICHIEDERE SOLIDITÀ SPECIFICA.

Eventuali esigenze particolari andranno specificate all'atto dell'ordine.

Qualora venga confermato un difetto del filo, non saranno riconosciuti danni per quantità smacchinate oltre il 10% in peso della quantità consegnata.

SIDNEY

Nm. 2/46

55% (WV) EXTRAFINE MERINO WOOL
40% (CO) COTTON
5% (WS) CASHMERE

● Available colours

KNITTING

Flat Machine 14-16 F.F. Cotton 27-30-33 GG 1 Ply

FINISHING

Finishing details are available on request.

IDEAL QUANTITIES

Melange colours: starting from kgs. 24
Surcharge for cartons of inferior weight.
Hank dyed solid shades:
kgs. 6-12-16-30-36-48-55-60-72-100-120-132-144-250

Surcharges: will be added according to our general sales conditions.

COLOURS FASTNESS:

REACH REGULATION
GB 18401 REGULATION COMPLIANCE
(Category B: products directly in contact with the skin)
IN CASE OF STRIPED OR CONTRAST KNITWEAR A SPECIFIC DYEING FASTNESS MUST BE ASKED.

Any other special need should be expressly requested.

If it's confirmed as a yarn defect, we will not accept any claims for any knitted quantity over 10% of the delivered weight.



INDEX

● 001205	1B	● 028950	2B	216512	6C	● 548277	8A
● 008800	9C	028951	1D	216513	5A	● 548278	3D
008804	8D	● 099054	1A	216514	5C	● 548279	3C
028649	4A	● 099070	9D	216515	7D	● 548280	8C
028669	5D	● 208551	6A	● 548271	3A	● 548281	9A
028933	4B	215260	6B	● 548272	2C	● 548282	3B
028940	2A	215267	9B	● 548274	2D	● 548283	1C
028948	7A	216507	4D	● 548275	8B	● 548284	4C
028949	5B	216508	7B	● 548276	7C	● 548285	6D

●: colori disponibili / available colours



Associazione Tessile e Salute

I nostri articoli soddisfano tutti i requisiti di Tessile e Salute.
Zegna Baruffa Lane Borgosesia partecipa al progetto Tessile e Salute sostenuto dal Ministero della Salute.

www.tessileesalute.it

Certificato n° 14900021



Zegna Baruffa Lane Borgosesia applica il Protocollo Chemical Management 4sustainability per l'eliminazione delle sostanze chimiche tossiche e nocive attraverso la MRSL ZDHC e in conformità con le linee guida dei brand.


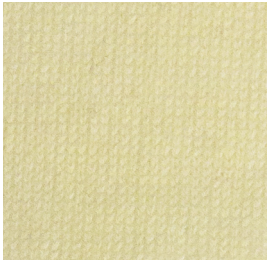


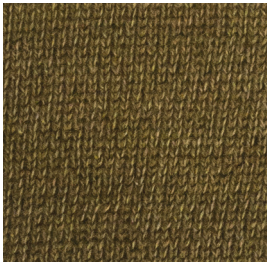
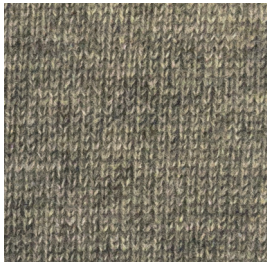

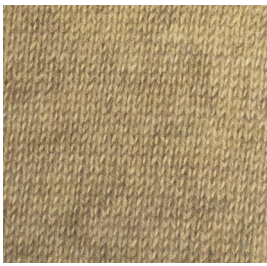

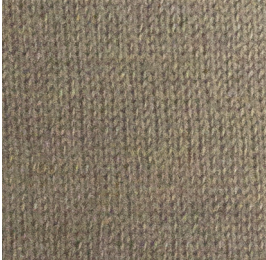
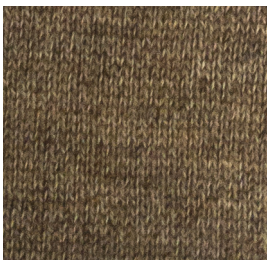

www.4sustainability.it

TF

Traceability & Fashion

Codice di tracciabilità n° CTC0057A



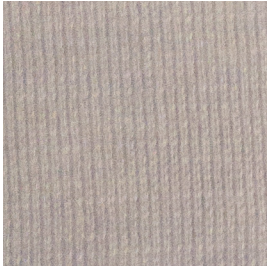
	1	2	3
A	 099054 ●	 028940	 548271 ●
B	 001205 ●	 028950 ●	 548282 ●
C	 548283 ●	 548272 ●	 548279 ●
D	 028951	 548274 ●	 548278 ●

4

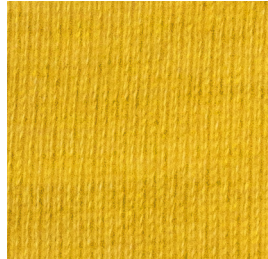
5

6

A



028649



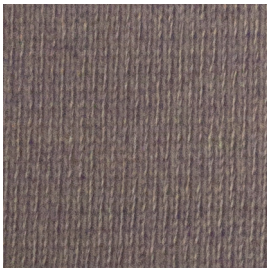
216513



208551



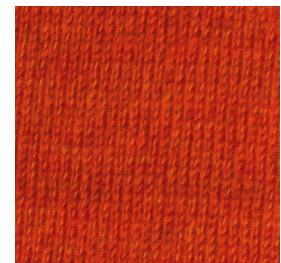
B



028933



028949

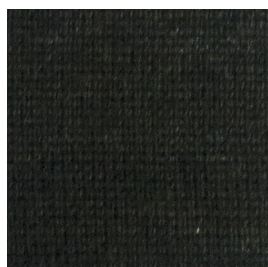


215260

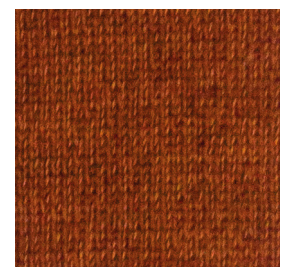
C



548284

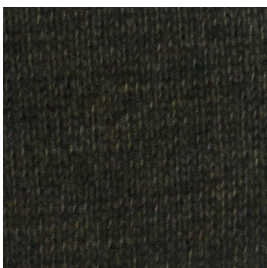


216514



216512

D



216507



028669



548285



7

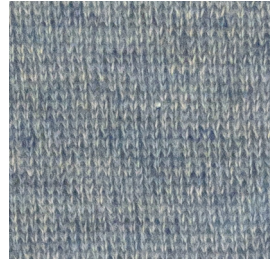
8

9

A



028948



548277



548281



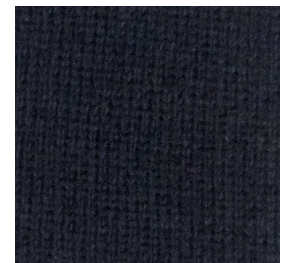
B



216508



548275



215267

C



548276



548280



008800



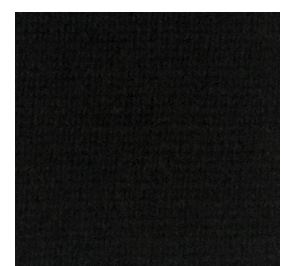
D



216515



008804



099070



●: colori disponibili / available colours