



## BREST RECYCLED CERTIFICATO GRS

Nm. 2/48 - Nm. 3/48

50% (WV) LANA MERINO FINE (21,5 µ)

50% (PA) POLIAMMIDE RICICLATA

Lana trattata "CHLORINE FREE"



Realizzato con 50% POLIAMMIDE RICICLATA

Certificato da ICEA

GRS 2020-111

● Colori disponibili in Nm. 2/48 - Nm. 3/48

### IMPIEGO

Nm. 2/48

Rett. Fin. 14-16 Cotton 27-30 gg 1 Capo

Nm. 3/48

Rett. Fin. 12-14 Cotton 21-24-27 gg 1 Capo

### FINISSAGGIO

Dettagli di finissaggio sono disponibili su richiesta.

### QUANTITÀ OTTIMALI

Colori disponibili: a partire da Kg. 1

Collo ideale: Kg. 24 circa

Supplementi per colli di peso inferiore.

Colori uniti non disponibili o a campione:

kg. 6-9-16-24-30-40-60-70-100-150-300-600.

Data la particolare mista di questo filo, è possibile, in alcuni casi, che si manifesti un leggero effetto melange.

La possibile presenza di contaminazioni chiare o scure, sono da considerarsi una caratteristica derivante dalla materia prima riciclata.

### SOLIDITÀ COLORI:

CONFORMITÀ NORMATIVA REACH

CONFORMITÀ NORMATIVA GB 18401

(Categoria B: prodotti a contatto diretto con la pelle)

PER USO IN RIGATO CON COLORI CONTRASTANTI

RICHIEDERE SOLIDITÀ SPECIFICA.

Eventuali esigenze particolari andranno specificate all'atto dell'ordine.

## BREST RECYCLED GRS CERTIFIED

Nm. 2/48 - Nm. 3/48

50% (WV) FINE MERINO WOOL (21,5 µ)

50% (PA) RECYCLED POLYAMIDE

"CHLORINE FREE" treated wool



Made with 50% RECYCLED POLYAMIDE

Certified by ICEA

GRS 2020-111

● Available colours for Nm. 2/48 - Nm. 3/48

### KNITTING

Nm. 2/48

Flat Machine 14-16 F.F. Cotton 27-30 gg 1 Ply

Nm. 3/48

Flat Machine 12-14 F.F. Cotton 21-24-27 gg 1 Ply

### FINISHING

Finishing details are available on request.

### IDEAL QUANTITIES

Available colours: starting from 1 Kg. each.

Standard box: approximately kgs. 24

Surcharge for cartons of inferior weight.

Non available or custom solid colours:

kgs. 6-9-16-24-30-40-60-70-100-150-300-600.

Due to special composition, occasionally, a slight mélangé effect may occur.

The possible presence of light or dark contaminations is a characteristic of this yarn, resulting from recycled raw material.

### COLOURS FASTNESS:

REACH REGULATION

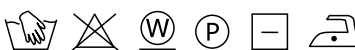
GB 18401 REGULATION COMPLIANCE

(Category B: products directly in contact with the skin)

IN CASE OF STRIPED OR CONTRAST KNITWEAR A

SPECIFIC DYEING FASTNESS MUST BE ASKED.

Any other special need should be expressly requested.



Associazione Tessile e Salute

I nostri articoli soddisfano tutti i requisiti di Tessile e Salute.  
Zegna Baruffa Lane Borgosesia partecipa al progetto  
Tessile e Salute sostenuto dal Ministero della Salute.

www.tessileesalute.it

Certificato n° 14900021



ID Nr. 4S-100277  
visit 4sustainability.it

TF

Traceability & Fashion

Codice di tracciabilità n° CTC0057A



PRINTED ON  
RECYCLED PAPER

1

2

3

A



099054



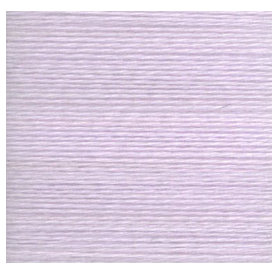
029056



001205



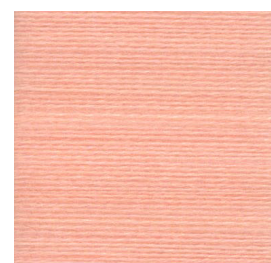
B



029061



029232

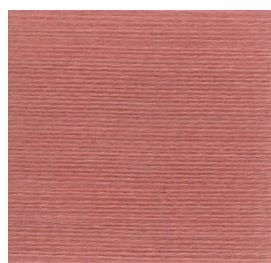


029230

C



028974



029231

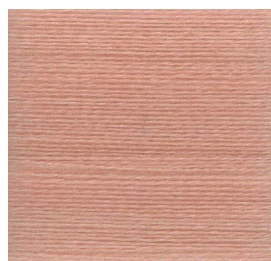


029011

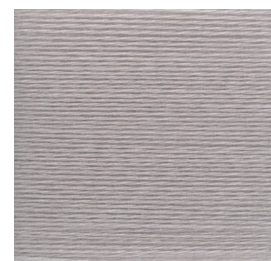
D



029013



029235



029055

4

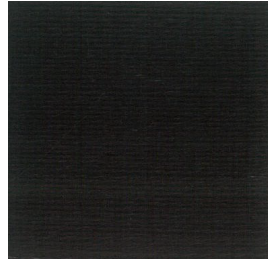
5

6

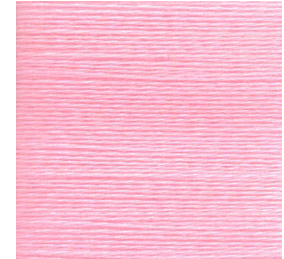
A



028591



026672

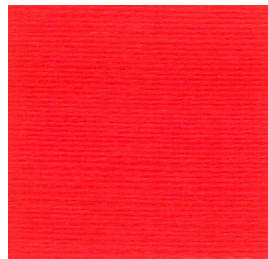


028968

B



029053



029063



029065

C



029099



029102



000527

D



028899



029095



028836

7

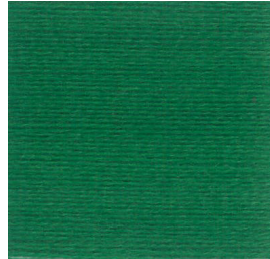
8

9

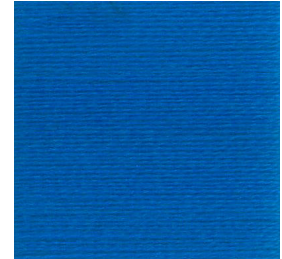
A



029070

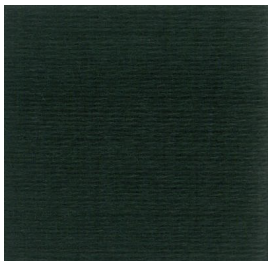


029234



029233

B



028857



029096



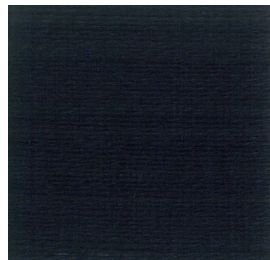
027838



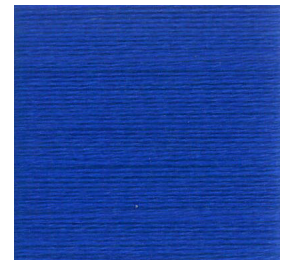
C



028693



008804

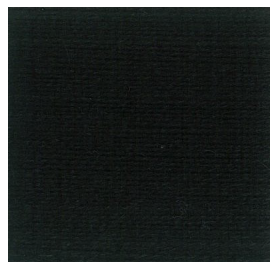


029068

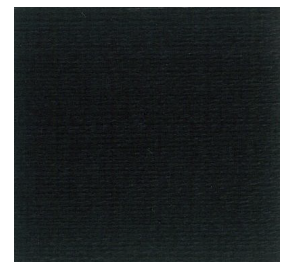
D



028847



099070



008800



## INDEX

---

000527	6C	028968	6A	029095	5D
● 001205	3A	028974	1C	029096	8B
● 008800	9D	029011	3C	029099	4C
008804	8C	029013	1D	029102	5C
026672	5A	029053	4B	029230	3B
● 027838	9B	029055	3D	029231	2C
028591	4A	029056	2A	029232	2B
028693	7C	029061	1B	029233	9A
028836	6D	029063	5B	029234	8A
028847	7D	029065	6B	● 029235	2D
028857	7B	029068	9C	099054	1A
● 028899	4D	029070	7A	● 099070	8D

●: colori disponibili / *available colours*