

CASHWOOL® UNITI

Nm. 2/30 - Nm. 2/36 - Nm. 2/48
100% (WV) LANA MERINO EXTRAFINE



CASHWOOL® SOLID

Nm. 2/30 - Nm. 2/36 - Nm. 2/48
100% (WV) EXTRAFINE MERINO WOOL



CASHWOOL® MELANGE

Nm. 2/30 - Nm. 2/36 - Nm. 2/48



CASHWOOL® MELANGE

Nm. 2/30 - Nm. 2/36 - Nm. 2/48



CASHWOOL® SUPERMELANGE

Nm. 2/30 - Nm. 2/36 - Nm. 2/48



CASHWOOL® SUPERMELANGE

Nm. 2/30 - Nm. 2/36 - Nm. 2/48



“Supermélange”

Nuovi effetti cromatici melange ottenuti grazie allo sviluppo di una tecnologia innovativa che consente una diversa e più completa miscelatura delle fibre colorate.

“Supermélange”

New melange colour effects, achieved by using a new innovative technology that enables us to create new, different and better blends of coloured fibres.

IMPIEGO

Nm. 2/30			
Rettilezza Finezza 12-14	Cotton 21-24-27 gg	a 1 capo	
Nm. 2/36			
Rettilezza Finezza 12-14	Cotton 21-24-27 gg	a 1 capo	
Nm. 2/48			
Rettilezza Finezza 14-16	Cotton 27-30-33 gg	a 1 capo	
Rettilezza Finezza 12	Cotton 21 gg	a 2 capi	
Rettilezza Finezza 14 Jacquard		a 1 capo	

KNITTING

Nm. 2/30			
Flat Machine 12-14	F.F. Cotton 21-24-27 gg	1 Ply	
Nm. 2/36			
Flat Machine 12-14	F.F. Cotton 21-24-27 gg	1 Ply	
Nm. 2/48			
Flat Machine 14-16	F.F. Cotton 27-30-33 gg	1 Ply	
Flat Machine 12	F.F. Cotton 21 gg	2 Ply	
Flat Machine 14 Jacquard		1 Ply	

QUANTITÀ OTTIMALI CASHWOOL

Colori stock service: a partire da Kg. 1
Collo ideale: Kg. 24 circa
Supplementi per colli di peso inferiore.
Colori uniti non stock service o a campione:
kg. 9-18-30-45-70-100-160-320-630.

CASHWOOL IDEAL QUANTITIES

Stock service colours: starting from 1 Kg. each.
Standard box: approximately kgs. 24
Surcharge for cartons of inferior weight.
Non stock service or custom solid colours:
kgs. 9-18-30-45-70-100-160-320-630.

MAXI

Nm. 4600 - Nm. 3000
100% (WV) LANA MERINO EXTRAFINE



MAXI

Nm. 4600 - Nm. 3000
100% (WV) EXTRAFINE MERINO WOOL



IMPIEGO

Nm. 4600	Rettilezza Finezza 5	a 1 capo
Nm. 3000	Rettilezza Finezza 3	a 1 capo

KNITTING

Nm. 4600	Flat Machine 5	1 Ply
Nm. 3000	Flat Machine 3	1 Ply

QUANTITÀ OTTIMALI MAXI

Colori uniti e melange minimo Kg 24 circa.
Supplementi per colli di peso inferiore.
Colori uniti a campione: 9-20-33-48-75-115-170-345-700.
Colori Melange a campione Kg 300 minimo.

MAXI IDEAL QUANTITIES

Solid and melange colours minimum 24 kgs.
Surcharge for cartons of inferior weight.
Custom solid colours: 9-20-33-48-75-115-170-345-700.
Custom mélange colours: minimum kgs. 300.

FINISSAGGIO

Dettagli di finissaggio disponibili su richiesta.

FINISHING

Finishing details are available on request.

SOLIDITÀ COLORI:

CONFORMITÀ NORMATIVA REACH
CONFORMITÀ NORMATIVA GB 18401
(Categoria B: prodotti a contatto diretto con la pelle)
PER USO IN RIGATO CON COLORI CONTRASTANTI
RICHIEDERE SOLIDITÀ SPECIFICA.

Eventuali esigenze particolari andranno specificate all'atto dell'ordine.

COLOURS FASTNESS:

REACH REGULATION
GB 18401 REGULATION COMPLIANCE
(Category B: products directly in contact with the skin)
IN CASE OF STRIPED OR CONTRAST KNITWEAR A SPECIFIC
DYEING FASTNESS MUST BE ASKED.

Any other special need should be expressly requested.



CASHWOOL TREND A/I 22/23: NUOVI COLORI UNITI STAGIONALI

A



099020



029009

B

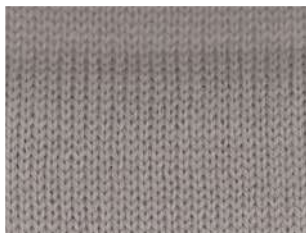


029054



029060

C

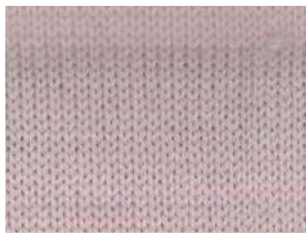


029055



029061

D



029056



029062

E



029057

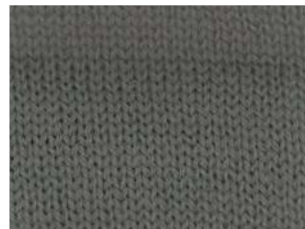


029011

F



029058



029013

G



029059



029012

CASHWOOL TREND A/I 22/23: NUOVI COLORI UNITI STAGIONALI

A



029091



029099

B



029094



029100

C



029092



029101

D



029095



029102

E



029096



029103

F



029097

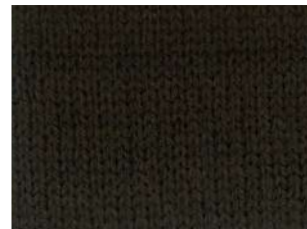


029104

G



029098



029093

CASHWOOL TREND A/I 22/23: NUOVI COLORI UNITI STAGIONALI

A



028989



029066

B



029050



029067

C



029063



029068

D



029064



029069

E



029008



029052

F



029051



029053

G



029065



029070

3

2

1

A

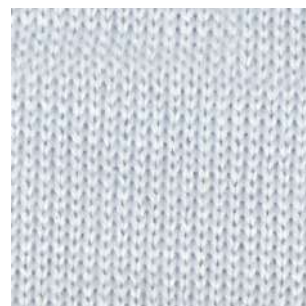


099054



157059

C



027005

C

B



028970



028851

C

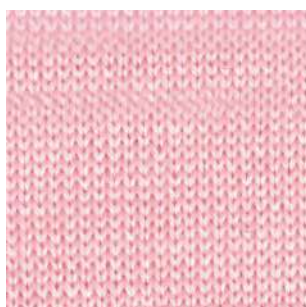


028761

C



028971



028968



027868

C

D



028307



028969

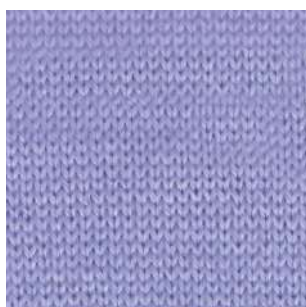


028660

E



028839



028647



028967

C: Candies
M: Melange
Supermelange

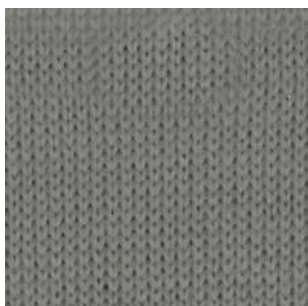
● : colori disponibili in Nm. 2/48 / available colours in Nm. 2/48
* : colori disponibili in Nm. 2/36 / available colours in Nm. 2/36
▲ : colori disponibili in Nm. 4600 / available colours in Nm. 4600
■ : colori disponibili in Nm. 3000 / available colours in Nm. 3000

6

5

4

A



028976



028661



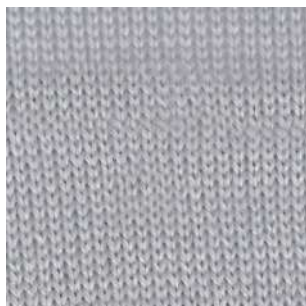
001205



B



028977



028974

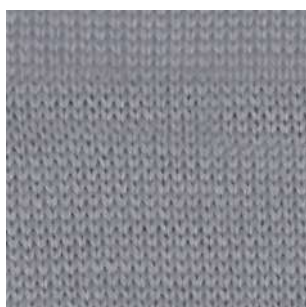


027865
C

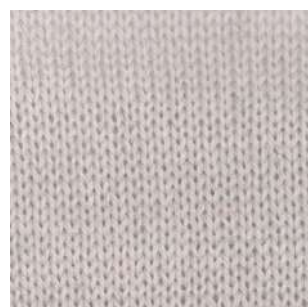
C



028978



028559



027969

D



028669



028975



028972

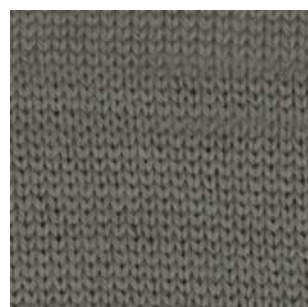
E



027734



028657



028973

C: Candies
M: Melange
Supermelange

● : colori disponibili in Nm. 2/48 / available colours in Nm. 2/48
* : colori disponibili in Nm. 2/36 / available colours in Nm. 2/36
▲ : colori disponibili in Nm. 4600 / available colours in Nm. 4600
■ : colori disponibili in Nm. 3000 / available colours in Nm. 3000

9

8

7

A



028034



028591



028847

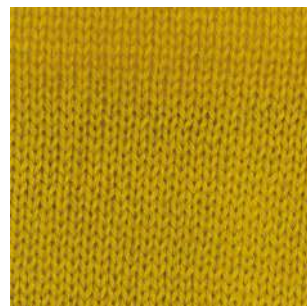
B



028382

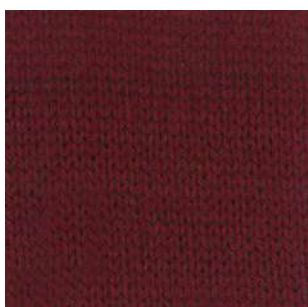


028981



028060

C



000527



028989



028517

D



025752



028990



058623

E



026672



028982



028979

C: Candies
M: Melange
Supermelange

● : colori disponibili in Nm. 2/48 / available colours in Nm. 2/48
* : colori disponibili in Nm. 2/36 / available colours in Nm. 2/36
▲ : colori disponibili in Nm. 4600 / available colours in Nm. 4600
■ : colori disponibili in Nm. 3000 / available colours in Nm. 3000

12

11

10

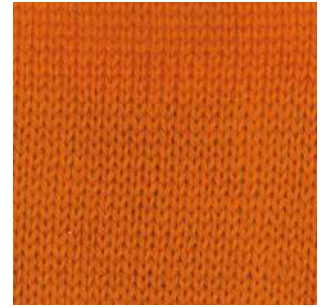
A



028836



008766



028705

B



028303



028867



028984

C



028845



001254



027623

D



026809



008764
*

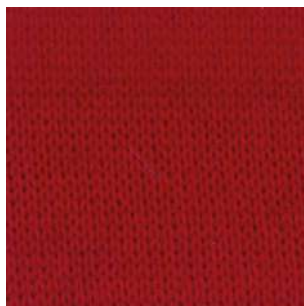


028203

E



028131



008768



025628

C: Candies
M: Melange
Supermelange

● : colori disponibili in Nm. 2/48 / available colours in Nm. 2/48
* : colori disponibili in Nm. 2/36 / available colours in Nm. 2/36
▲ : colori disponibili in Nm. 4600 / available colours in Nm. 4600
■ : colori disponibili in Nm. 3000 / available colours in Nm. 3000

15

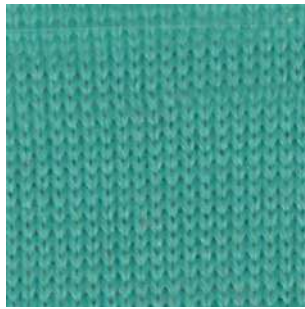
14

13

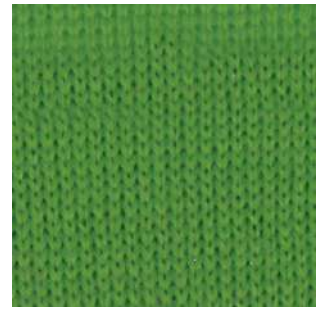
A



028573



027738



028678

B



028841

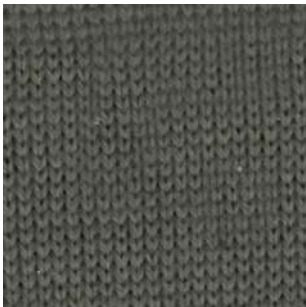


028694



027096

C



028987



028985



028857

D



028988



028986



025275

E



027218



008804



025158

C: Candies
M: Melange
Supremelange

● : colori disponibili in Nm. 2/48 / available colours in Nm. 2/48
* : colori disponibili in Nm. 2/36 / available colours in Nm. 2/36
▲ : colori disponibili in Nm. 4600 / available colours in Nm. 4600
■ : colori disponibili in Nm. 3000 / available colours in Nm. 3000

18

17

16

A



027942



028529



028693

B



028461



027952



027284

C



027838
*



027098
●

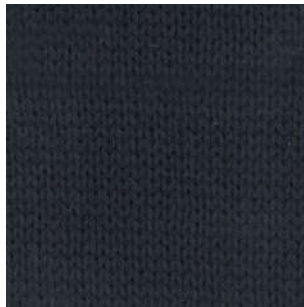


027984

D



028104



028853



008800
● * ▲ ■

E



027959



008802
● * ▲



099070
● * ▲ ■

C: Candies
M: Melange
Supermelange

● : colori disponibili in Nm. 2/48 / available colours in Nm. 2/48
* : colori disponibili in Nm. 2/36 / available colours in Nm. 2/36
▲ : colori disponibili in Nm. 4600 / available colours in Nm. 4600
■ : colori disponibili in Nm. 3000 / available colours in Nm. 3000

INDEX SOLID

● 000527 9C	027218 15E	028303 12B	028761 1B	028975 5D
■▲*● 001205 4A	027284 16B	028307 3D	028836 12A	028976 6A
001254 11C	027623 10C	028382 9B	028839 3E	028977 6B
* 008764 11D	027734 6E	028461 18B	028841 15B	028978 6C
008766 11A	027738 14A	028517 7C	028845 12C	028979 7E
008768 11E	* 027838 18C	028529 17A	028847 7A	028981 8B
■▲*● 008800 16D	C 027865 4B	028559 5C	C 028851 2B	028982 8E
▲*● 008802 17E	C 027868 1C	028573 15A	028853 17D	028984 10B
008804 14E	027942 18A	028591 8A	028857 13C	028985 14C
025158 13E	027952 17B	028647 2E	028867 11B	028986 14D
● 025275 13D	027959 18E	028657 5E	028967 1E	028987 15C
025628 10E	027969 4C	028660 1D	028968 2C	028988 15D
025752 9D	027984 16C	028661 5A	028969 2D	028989 8C
026672 9E	028034 9A	028669 6D	028970 3B	028990 8D
026809 12D	028060 7B	028678 13A	028971 3C	058623 7D
C 027005 1A	028104 18D	028693 16A	028972 4D	■▲*● 099054 3A
027096 13B	028131 12E	028694 14B	028973 4E	■▲*● 099070 16E
● 027098 17C	028203 10D	028705 10A	028974 5B	C 157059 2A

INDEX MELANGE

▲*● S 420266 3D	S 421759 3B	● M 441269 18E	M 443352 13E
*● M 420426 6D	● S 421760 19D	● M 441315 14C	● M 443640 10D
*● S 420667 2C	● S 421764 11C	● M 441316 7D	● M 444391 21B
S 420702 1A	S 421769 10A	● M 441410 15C	● M 444789 17E
▲● S 420939 4E	● S 421770 2B	● M 441614 20A	● M 445075 8D
*● S 420942 5D	● S 421845 18A	● M 441618 23B	● M 445173 23D
● M 420964 24D	● S 421849 24C	● M 441620 14B	● M 445186 18D
● M 420991 23C	● S 421850 16D	● M 441657 11E	● M 445360 9A
● M 421015 6B	● S 421921 19C	● M 441702 21D	● M 445361 9B
▲● S 421134 1E	● S 421923 8C	● M 441705 18B	▲● M 445362 8A
● S 421135 2E	● S 421925 16C	● M 441706 20E	● M 445363 9D
*● S 421420 15B	● S 421928 17A	● M 441882 7B	● M 445364 11B
● S 421423 8B	● S 421929 16A	M 441999 21A	● M 445365 14A
*● S 421425 5B	S 421930 17C	● M 442000 22C	● M 445366 14E
● S 421426 1D	S 421946 21C	▲● M 442191 7E	● M 445367 23E
▲*● S 421428 5E	S 421964 3A	*● M 442194 20C	● M 445368 21E
● S 421433 5A	● S 421965 1B	● M 442195 8E	● M 445370 20D
● S 421436 6C	● S 421967 22B	M 442197 24A	M 445371 13C
● S 421503 12E	● S 421968 4A	● M 442232 16E	M 445373 12D
▲● S 421505 20B	S 421970 6A	● M 442255 15D	M 445424 9C
▲● S 421506 19E	● S 421972 10E	● M 442483 12C	M 445425 10B
S 421507 2D	● S 421976 4D	● M 442619 10C	M 445426 13B
*● S 421508 3C	S 422051 1C	● M 442688 14D	M 445427 9E
*● S 421605 6E	S 422052 24E	● M 442841 7C	M 445428 13A
▲● S 421607 2A	S 422125 18C	*● M 442842 22D	M 445429 17B
● S 421669 19A	S 422138 7A	● M 442873 17D	M 445435 22E
▲● S 421745 4B	● S 422204 15A	● M 443083 15E	M 445469 13D
● S 421746 4C	M 440988 5C	● M 443114 22A	M 445471 12B
S 421751 19B	● M 441142 3E	M 443349 16B	M 445473 12A
● S 421752 11D	● M 441250 24B	*● M 443351 23A	M 445474 11A

C: Candies
M: Melange
S: Supermelange

● : colori disponibili in Nm. 2/48 / available colours in Nm. 2/48
* : colori disponibili in Nm. 2/36 / available colours in Nm. 2/36
▲ : colori disponibili in Nm. 4600 / available colours in Nm. 4600
■ : colori disponibili in Nm. 3000 / available colours in Nm. 3000

1

2

3

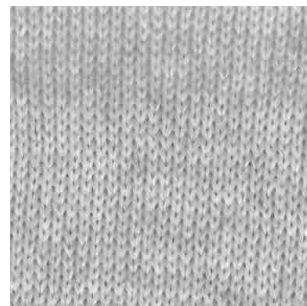
A



420702
supermelange



421607
supermelange
● ▲

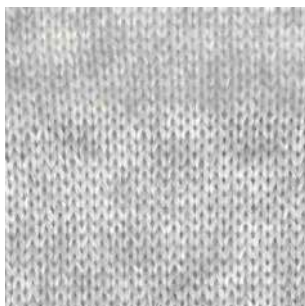


421964
supermelange

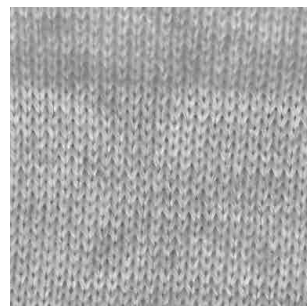
B



421965
supermelange
●

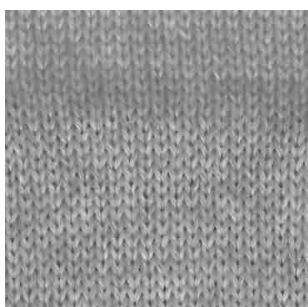


421770
supermelange
●



421759
supermelange

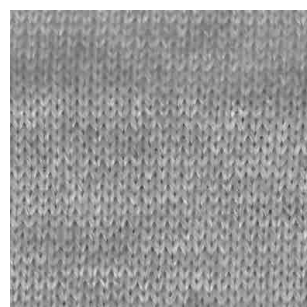
C



422051
supermelange

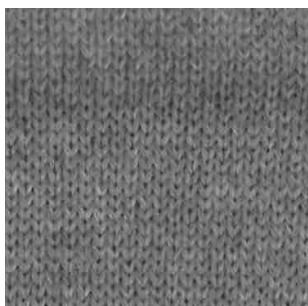


420667
supermelange
● *

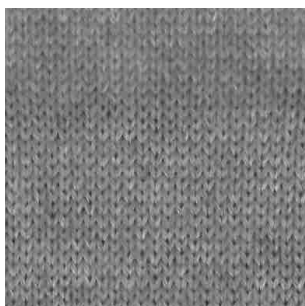


421508
supermelange
● *

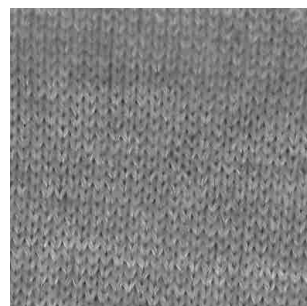
D



421426
supermelange
●



421507
supermelange

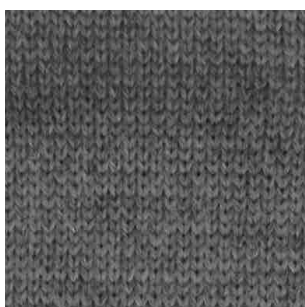


420266
supermelange
● * ▲

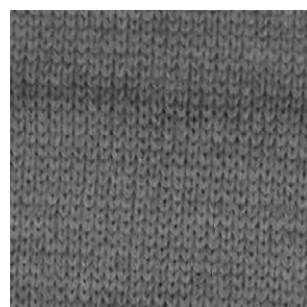
E



421134
supermelange
● ▲



421135
supermelange
●



441142
M
●

C: Candies
M: Melange
Supermelange

● : colori disponibili in Nm. 2/48 / available colours in Nm. 2/48
* : colori disponibili in Nm. 2/36 / available colours in Nm. 2/36
▲ : colori disponibili in Nm. 4600 / available colours in Nm. 4600
■ : colori disponibili in Nm. 3000 / available colours in Nm. 3000

4

5

6

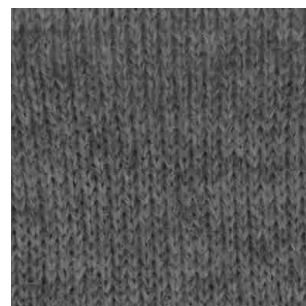
A



421968
supermelange



421433
supermelange



421970
supermelange

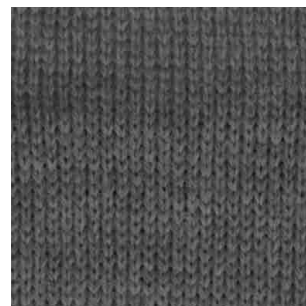
B



421745
supermelange



421425
supermelange



421015
M



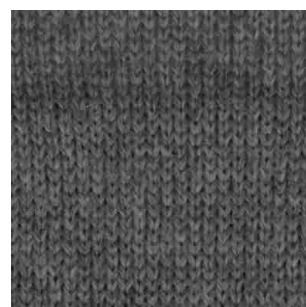
C



421746
supermelange



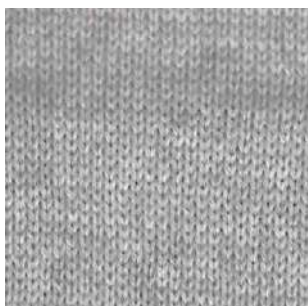
440988
M



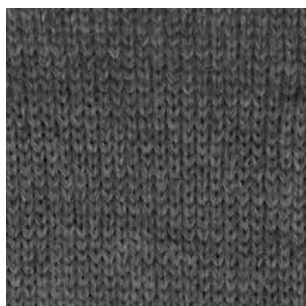
421436
supermelange



D



421976
supermelange



420942
supermelange



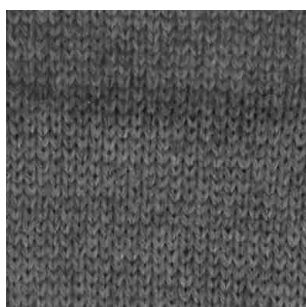
420426
M



E



420939
supermelange



421428
supermelange



421605
supermelange



C: Candies
M: Melange
Supermelange

● : colori disponibili in Nm. 2/48 / available colours in Nm. 2/48
* : colori disponibili in Nm. 2/36 / available colours in Nm. 2/36
▲ : colori disponibili in Nm. 4600 / available colours in Nm. 4600
■ : colori disponibili in Nm. 3000 / available colours in Nm. 3000

7

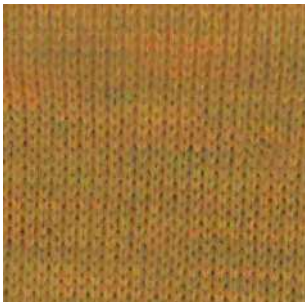
8

9

A




422138
supermelange



445362
M

● ▲



445360
M


●

B




441882
M

●



421423
supermelange

●



445361
M


●

C




442841
M

●



421923
supermelange

●




445424
M

D




441316
M

●



445075
M

●



445363
M


●

E




442191
M

● ▲



442195
M

●



445427
M

C: Candies
M: Melange
Supermelange

● : colori disponibili in Nm. 2/48 / available colours in Nm. 2/48
* : colori disponibili in Nm. 2/36 / available colours in Nm. 2/36
▲ : colori disponibili in Nm. 4600 / available colours in Nm. 4600
■ : colori disponibili in Nm. 3000 / available colours in Nm. 3000

10

11

12

A



421769
supermelange



445474
M



445473
M

B



445425
M



445364
M
●



445471
M

C



442619
M
●



421764
supermelange
●



442483
M
●

D



443640
M
●



421752
supermelange
●

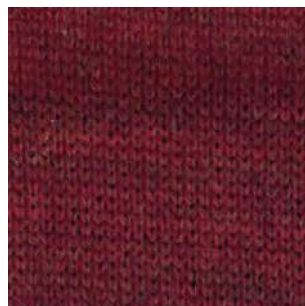


445373
M

E



421972
supermelange
●



441657
M
●



421503
supermelange
●

C: Candies
M: Melange
Supermelange

● : colori disponibili in Nm. 2/48 / available colours in Nm. 2/48
* : colori disponibili in Nm. 2/36 / available colours in Nm. 2/36
▲ : colori disponibili in Nm. 4600 / available colours in Nm. 4600
■ : colori disponibili in Nm. 3000 / available colours in Nm. 3000

13

14

15

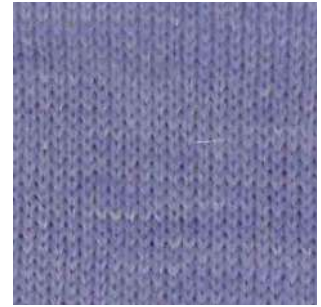
A



445428
M



445365
M ●



422204
supermelange ●

B



445426
M



441620
M ●



421420
supermelange ● *

C



445371
M



441315
M ●



441410
M ●

D



445469
M



442688
M ●



442255
M ●

E



443352
M



445366
M ●



443083
M ●

C: Candies
M: Melange
Supermelange

● : colori disponibili in Nm. 2/48 / available colours in Nm. 2/48
* : colori disponibili in Nm. 2/36 / available colours in Nm. 2/36
▲ : colori disponibili in Nm. 4600 / available colours in Nm. 4600
■ : colori disponibili in Nm. 3000 / available colours in Nm. 3000

16

17

18

A



421929
supermelange

●



421928
supermelange

●



421845
supermelange

●

B



443349
M



445429
M



441705
M

●

C



421925
supermelange

●



421930
supermelange



422125
supermelange

D



421850
supermelange

●



442873
M

●



445186
M

●

E



442232
M

●



444789
M

●



441269
M

●

C: Candies
M: Melange
Supermelange

● : colori disponibili in Nm. 2/48 / available colours in Nm. 2/48
* : colori disponibili in Nm. 2/36 / available colours in Nm. 2/36
▲ : colori disponibili in Nm. 4600 / available colours in Nm. 4600
■ : colori disponibili in Nm. 3000 / available colours in Nm. 3000

19

20

21

A



421669
supermelange

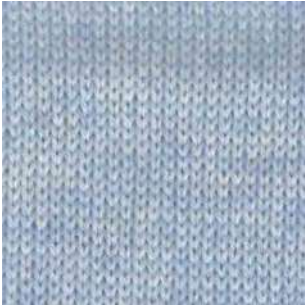


441614
M



441999
M

B



421751
supermelange



421505
supermelange



444391
M



C



421921
supermelange



442194
M



421946
supermelange

D



421760
supermelange



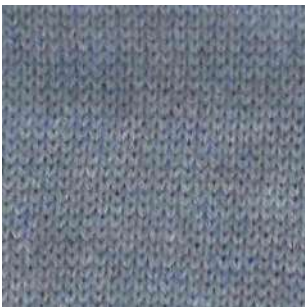
445370
M



441702
M



E



421506
supermelange



441706
M



445368
M



C: Candies
M: Melange
Supermelange

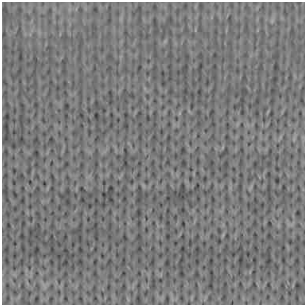
● : colori disponibili in Nm. 2/48 / available colours in Nm. 2/48
* : colori disponibili in Nm. 2/36 / available colours in Nm. 2/36
▲ : colori disponibili in Nm. 4600 / available colours in Nm. 4600
■ : colori disponibili in Nm. 3000 / available colours in Nm. 3000

22

23

24

A



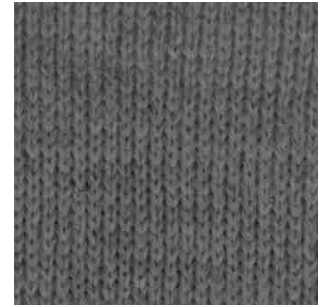
443114

M



443351

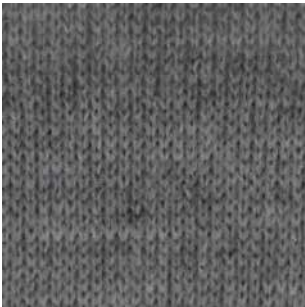
M



442197

M

B



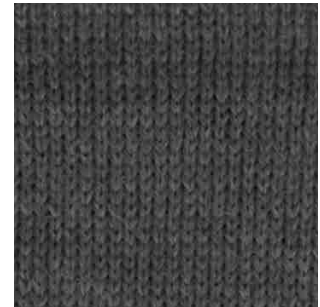
421967

supermelange



441618

M

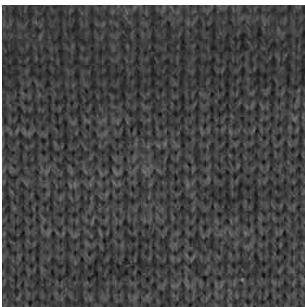


441250

M

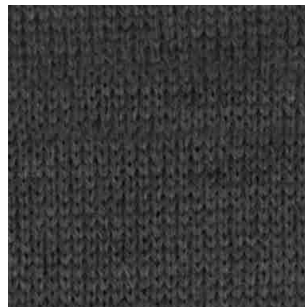


C



442000

M



420991

M



421849

supermelange



D



442842

M



445173

M



420964

M



E



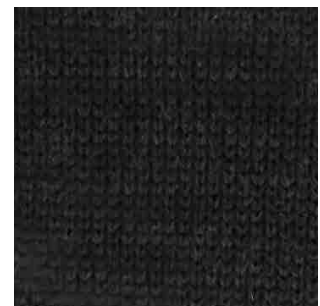
445435

M



445367

M



422052

supermelange

C: Candies
M: Melange
Supermelange

● : colori disponibili in Nm. 2/48 / available colours in Nm. 2/48
* : colori disponibili in Nm. 2/36 / available colours in Nm. 2/36
▲ : colori disponibili in Nm. 4600 / available colours in Nm. 4600
■ : colori disponibili in Nm. 3000 / available colours in Nm. 3000

CASHWOOL® MOULINÉ

Nm. 2/30

100% (WV) LANA MERINO EXTRAFINE



IMPIEGO

Rettilezza Finezza 12-14 Cotton 21-24-27 gg a 1 capo

CASHWOOL® MOULINÉ

Nm. 2/48

100% (WV) LANA MERINO EXTRAFINE



IMPIEGO

Rettilezza Finezza 14-16 Cotton 27-30-33 gg a 1 capo

FINISSAGGIO

Dettagli di finissaggio sono disponibili su richiesta.

QUANTITÀ OTTIMALI

Colli da kg. 24 circa.

Supplementi per colli di peso inferiore

Solidità colori: secondo le norme Woolmark.

Eventuali esigenze particolari andranno specificate all'atto dell'ordine.

CASHWOOL® MOULINÉ

Nm. 2/30

100% (WV) EXTRAFINE MERINO WOOL



KNITTING

Flat Machine 12-14 F.F. Cotton 21-24-27 gg 1 Ply

CASHWOOL® MOULINÉ

Nm. 2/48

100% (WV) EXTRAFINE MERINO WOOL



KNITTING

Flat Machine 14-16 F.F. Cotton 27-30-33 gg 1 Ply

FINISHING

Finishing details are available on request.

IDEAL QUANTITIES

Cartons of approximately kgs. 24.

Surcharge for cartons of inferior weight

Colour fastness: as per Woolmark specifications.

Any other special need should be expressly requested.



INDEX MOULINÉ

● 500005 4C	● 521287 5E	548198 1E	548390 6E	548405 3B
500007 4B	521288 2B	548205 6C	548394 2A	548406 3D
500022 6D	521289 2D	548385 5A	548399 1A	548407 2C
520266 4E	540772 4D	548386 5B	548400 1B	548409 3E
521154 4A	548046 6A	548387 5D	548402 1C	548410 3C
● 521157 5C	548177 6B	548388 2E	548403 1D	548411 3A

● : colori disponibili in Nm. 2/48 / available colours in Nm. 2/48



Associazione Tessile e Salute

I nostri articoli soddisfano tutti i requisiti di Tessile e Salute.
Zegna Baruffa Lane Borgosesia partecipa al progetto Tessile e Salute sostenuto dal Ministero della Salute.

www.tessileesalute.it

Certificato n° 14900021



Zegna Baruffa Lane Borgosesia applica il Protocollo Chemical Management 4sustainability per l'eliminazione delle sostanze chimiche tossiche e nocive attraverso la MRSL ZDHC e in conformità con le linee guida dei brand.

www.4sustainability.it

TF

Traceability & Fashion

Codice di tracciabilità n° CTC0057A



Tested for harmful substances according to Oeko-Tex® Standard 100 993654.0 CENTROCOT

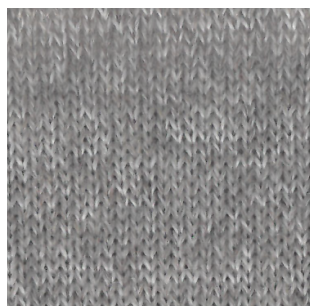


3

2

1

A



548411

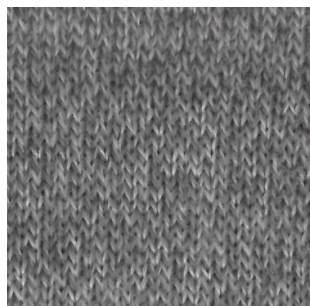


548394



548399

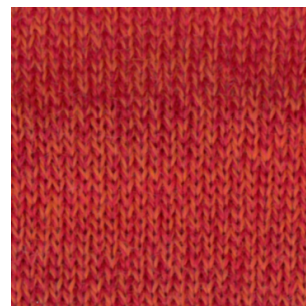
B



548405

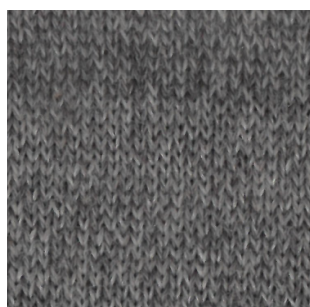


521288



548400

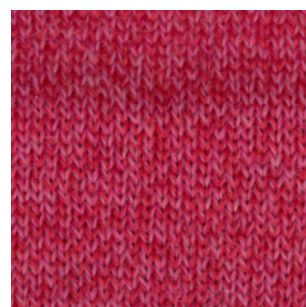
C



548410

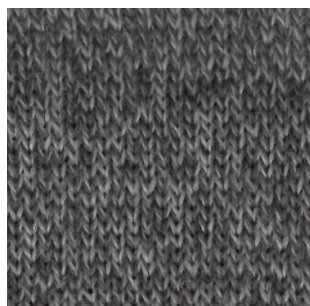


548407



548402

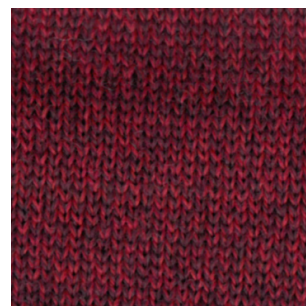
D



548406

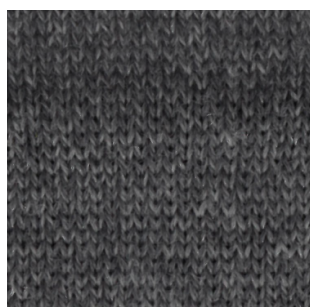


521289

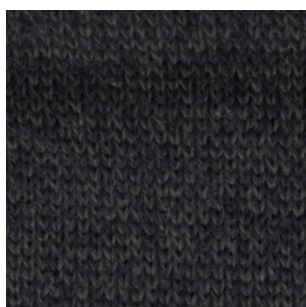


548403

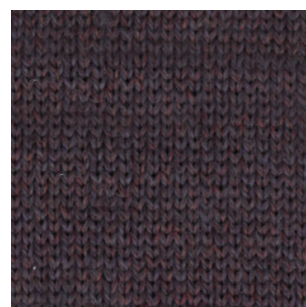
E



548409



548388



548198

6

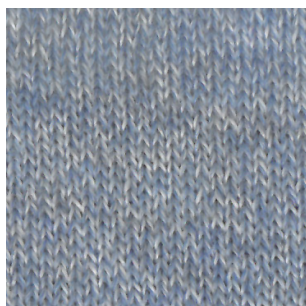
5

4

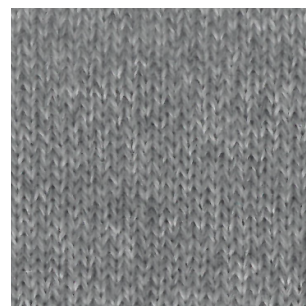
A



548046



548385



521154

B



548177



548386



500007

C



548205



521157



500005



D



500022

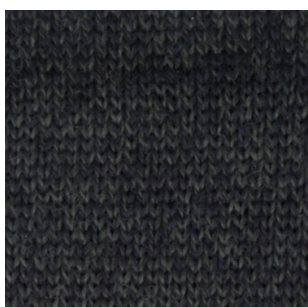


548387



540772

E



548390



521287



520266