

*Botto-Poala*

**GOLD GLITTER**

NM. 33.000

58% CASHMERE

25% SETA

9% POLIAMMIDE

8% POLIESTERE (METALLIZZATO) LUREX®

NO STOCK SERVICE

IMPIEGO: MACCHINA RETTILINEA FIN. 18  
APPLICATIONS: FLAT MACHINES 18 COTTON 30 - 33 GG.

**BLOSSOM**

NM. 44.000

55% CASHMERE

24% SETA

11% POLIAMMIDE

10% POLIESTERE (METALLIZZATO) LUREX®

NO STOCK SERVICE

IMPIEGO: MACCHINA RETTILINEA FIN. 18  
APPLICATIONS: FLAT MACHINES 18 COTTON 30 - 33 GG.

**SOLIDITÀ COLORI:**

RISPONDENTI ALLE NORME WOOLMARK

PER USO IN RIGATO CON COLORI CONTRASTANTI RICHIEDERE  
SOLIDITÀ SPECIFICA PER RIGATURA.

**COLOURS FASTNESS:**

WOOLMARK STANDARDS

IN CASE OF STRIPED KNITWEAR WITH STRONG AND CONTRASTING  
COLOURS A SPECIFIC DYEING FASTNESS MUST BE ASKED.



PER CAPI RIGATI LAVARE A SECCO

IN CASE OF STRIPED KNITWEAR DRYCLEANING IS RECOMMENDED



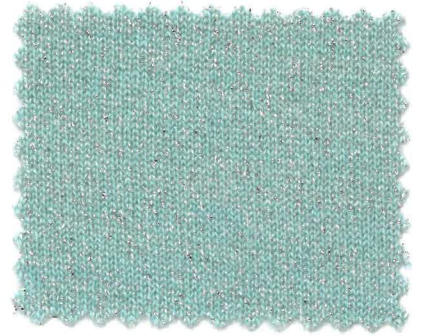
*Botto Poala*



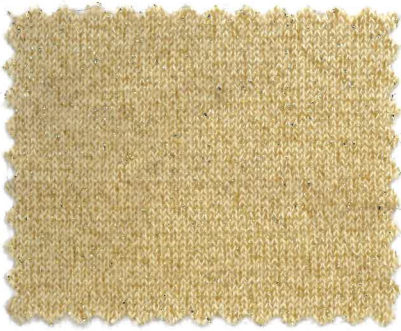
851292



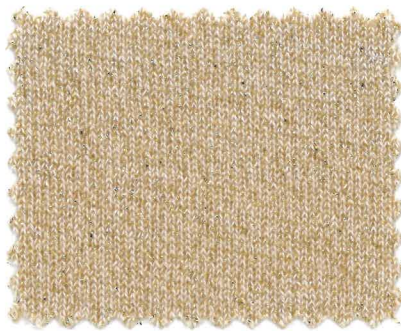
207345



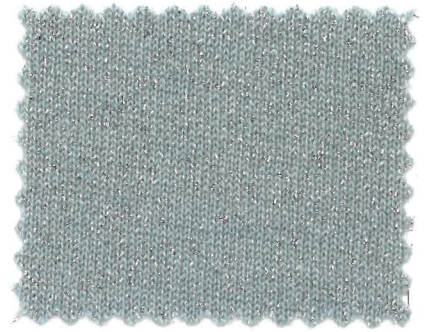
207343



028056



028035



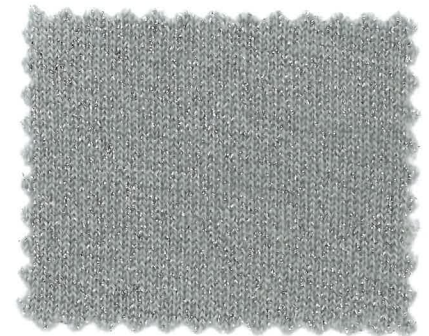
201223



851289



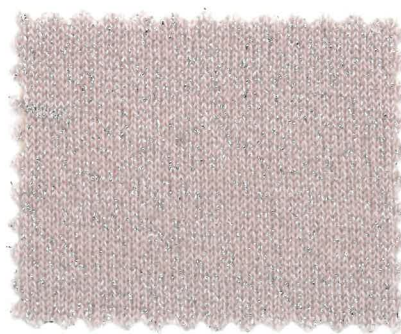
027974



203785



851287



028071



859556

LEGENDA

027974	2/C	207343	3/A
028035	2/B	207345	2/A
028056	1/B	851287	1/D
028071	2/D	851289	1/C
201223	3/B	851292	1/A
203785	3/C	859556	3/D

