

## CASHMERE GLITTER NM. 16000

92% (WS) cashmere  
4% (PA) poliammide  
4% (PM) poliestere metallizzato - LUREX®



### IMPIEGO

F.F. Cotton 21 gg, Rettilinea finezza 12 1 Capo

### FINISSAGGIO

La follatura è indispensabile per esaltare le caratteristiche del filo.

Si consiglia un trattamento in acqua tiepida max 30°C con sapone neutro e/o ammorbidente al 1,5% sul peso della merce. La durata del finissaggio dipende dal tipo di macchina e di risultato desiderato.

Asciugare in tumbler avendo cura di non essiccare troppo i capi/teli (max. 70°C).

Stirare con abbondante vapore.

Colori uniti: si possono tingere tutti i colori delle cartelle stagionali e colori a richiesta.

## CASHMERE GLITTER NM. 16000

92% (WS) cashmere  
4% (PA) polyamide  
4% (PM) metalized polyester - LUREX®



### KNITTING

F.F. Cotton 21 gg, Flat machine 12 1 Ply

### FINISHING

Milling is necessary to enhance characteristics of the yarn.

Finishing in lukewarm water (max 30°C) with neutral soap and/or softener at 1,5% of the good's weight is recommended. The finishing time depends on the type of machine and desired results.

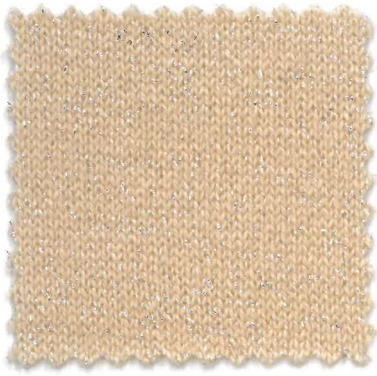
Tumble dry.

Do not over-dry (max. 70°C).

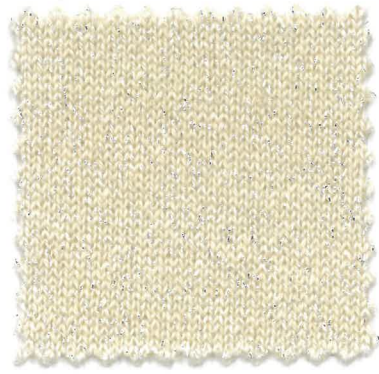
Finish giving generous steam.

Solid Colours: colours from our seasonal colour cards or custom-made colours can be dyed.

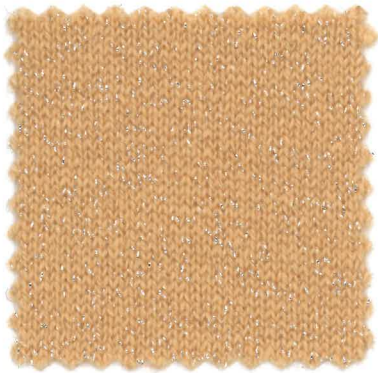




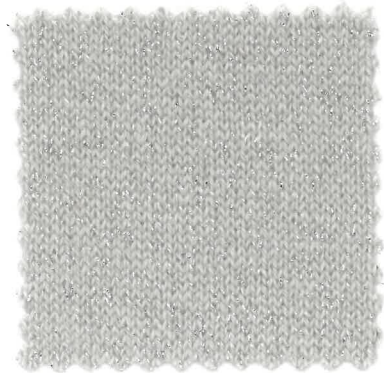
027815



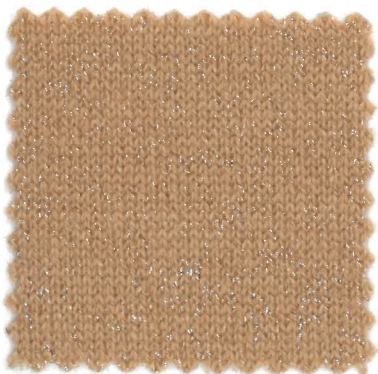
000001



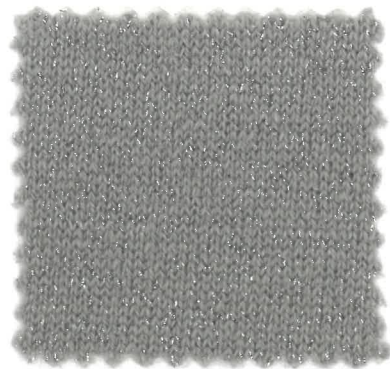
027818



204885



027866



204880