

## ATENA SOFT

NM. 3/80

60% (SE) SETA  
30% (WS) CASHMERE  
10% (LI) LINO

### \* COLORI DISPONIBILI

IMPIEGO: MACCHINA RETTILINEA FIN. 16-18 COTTON 30-33 GG.

### QUANTITÀ OTTIMALI

COLORI DISPONIBILI: A PARTIRE DA KG. 1,  
COLLO IDEALE KG. 24 CA.  
COLORI UNITI NON DISPONIBILI O A CAMPIONE:  
KG. 6 - 9 - 16 - 24 - 30 - 40 - 60 - 70 - 100 - 150 - 300

SUPPLEMENTI: SARANNO APPLICATI COME PREVISTO DALLE NOSTRE  
CONDIZIONI GENERALI DI VENDITA.

### SOLIDITÀ COLORI:

DATA LA COMPOSIZIONE DEL FILATO LE SOLIDITÀ GB 18401 (CINA)  
NON SONO GARANTITE.

QUESTI VALORI NON GARANTISCONO L'UTILIZZO IN RIGATO,  
SPECIALMENTE PER I FORTI CONTRASTI.

EVENTUALI ESIGENZE PARTICOLARI DOVRANNO ESSERE  
SPECIFICATE ALL'ATTO DELL'ORDINE.

IL LINO PER SUA STESSA NATURA PRESENTA PECULIARITÀ DEL TUTTO  
SPECIALE; POTREBBE MANIFESTARE DIFFERENZA DI COLORE FRA LE  
PARTITE DI GREGGIO, DANDO ORIGINE A SCARSA UNIFORMITÀ DI  
TONALITÀ FRA LE FORNITURE. DATA LA SPECIALE COMPOSIZIONE DI  
QUESTO FILATO, NON TUTTI I TONI POSSONO ESSERE RIPRODOTTI  
FEDELMENTE. IN ALCUNI CASI, È POSSIBILE CHE SI MANIFESTI UN  
LEGGERO EFFETTO MELANGE. UNA SUPERFICIE LEGGERMENTE  
IRREGOLARE È CARATTERISTICA PROPRIA DEL LINO. A CAUSA DELLA  
SUA NATURALE "RIGIDITÀ", INOLTRE, IL LINO PUÒ EVIDENZIARE  
SPIRALITÀ NELLA MAGLIA RASATA DOPO IL LAVAGGIO IN ACQUA.

### FINISSAGGIO:

DETTAGLI DI FINISSAGGIO E SCHEDA TECNICA SONO DISPONIBILI  
SU RICHIESTA.

QUALORA VENGA CONFERMATO UN DIFETTO DEL FILO, NON  
SARANNO RICONOSCIUTI DANNI PER QUANTITÀ SMACCHINATE  
OLTRE IL 10% IN PESO DELLA QUANTITÀ CONSEGNA.

PER CAPI RIGATI LAVARE A SECCO



## ATENA SOFT

NM. 3/80

60% (SE) SILK  
30% (WS) CASHMERE  
10% (LI) LINEN

### \* AVAILABLE COLOURS

APPLICATIONS: FLAT MACHINE 16-18 COTTON 30-33 GG.

### IDEAL QUANTITIES:

AVAILABLE COLOURS: STARTING FROM 1 KG. EACH  
STANDARD BOX APPROXIMATELY KGS. 24  
NON AVAILABLE OR CUSTOM SOLID COLOURS:  
KGS. 6 - 9 - 16 - 24 - 30 - 40 - 60 - 70 - 100 - 150 - 300

SURCHARGES: WILL BE ADDED ACCORDING TO OUR GENERAL  
SALES CONDITIONS.

### COLOURS FASTNESS:

DUE TO THE YARN COMPOSITION THE GB 18401 (CINA) ARE NOT  
GUARANTEED.

SOME COLOURS MIGHT NOT BE SUITABLE FOR KNITTING STRIPES OR  
OTHER KNITTED PATTERN IF USING VERY CONTRASTING COLOURS.  
ANY OTHER SPECIAL FASTNESS SHOULD BE EXPRESSLY REQUESTED.

LINEN, BY ITS VERY NATURE, REVEALS VERY SPECIAL PECULIARITIES;  
THE COLOUR OF RAW WHITE YARN CAN VARY FROM LOT TO LOT  
AND THEREFORE CAUSE SLIGHT COLOUR DIFFERENCE AMONG THE  
LOTS SUPPLIED. DUE TO THE YARN SPECIAL COMPOSITION, THEN,  
IT MAY BE DIFFICULT TO EXACTLY REPRODUCE ALL REQUESTED  
SHADES. OCCASIONALLY A SLIGHT MELANGE EFFECT MAY APPEAR.  
A DELICATELY UNEVEN SURFACE IS ONE OF LINEN'S PECULIARITIES.  
IN ADDITION, DUE TO LINEN NATURAL "STIFFNESS", SPIRALITY MAY  
APPEAR ON PLAIN JERSEY WHEN WASHED IN WATER.

### FINISHING:

FINISHING AND PRODUCT TECHNICAL DETAILS ARE AVAILABLE ON  
REQUEST.

IF IT'S CONFIRMED AS A YARN DEFECT, WE WILL NOT ACCEPT ANY  
CLAIMS FOR ANY KNITTED QUANTITY OVER 10% OF THE DELIVERED  
WEIGHT.

IN CASE OF STRIPED KNITWEAR  
DRYCLEANING IS RECOMMENDED



Associazione Tessile e Salute

I nostri articoli soddisfano tutti i requisiti di Tessile e Salute.  
Zegna Baruffa Lane Borgosesia partecipa al progetto  
Tessile e Salute sostenuto dal Ministero della Salute.

www.tessileesalute.it

Certificato n° 14900021



ID Nr. 4S-100277  
visit 4sustainability.it

1

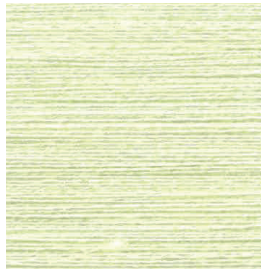
2

3

A



214220  
\*



214276



214244

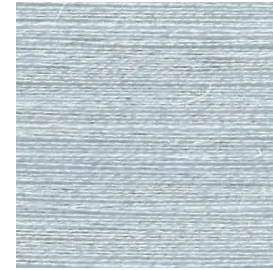
B



029293  




214292



216525

C



214260



029337

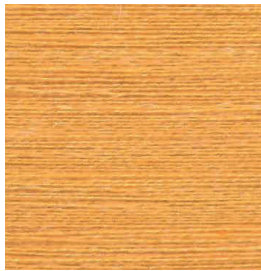


214252

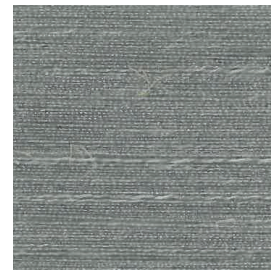
D



214284



029338



214253

E



214261



214262



214256

4

5

6

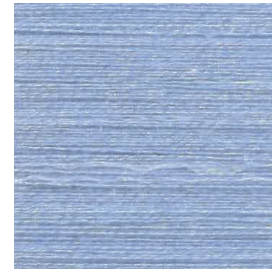
A



214278

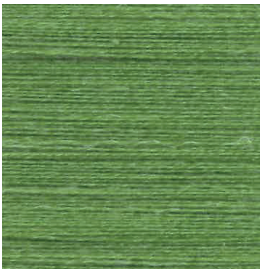


216526



029295

B



214279



214270



214222

C



029339  
\*



214271



214254

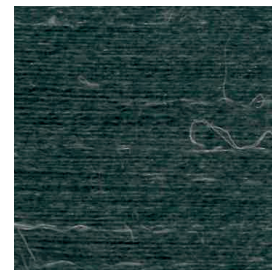
D



029340  
\*

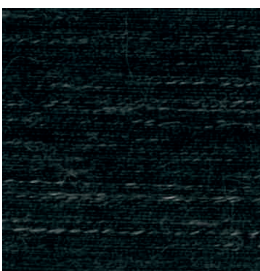


214272

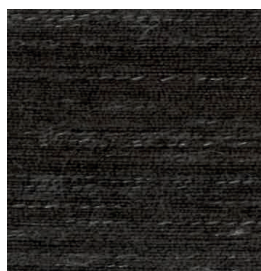


214248

E



214250



214265



214233



7

8

9

A



214293



029299



214285

B



214287



216522



028440

C



214294

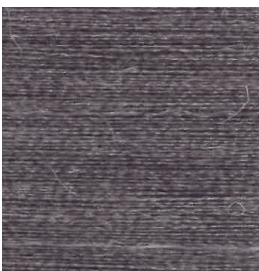


214289



214288

D



217379



888888



214296

E



214297



214295



029341

10

11

12

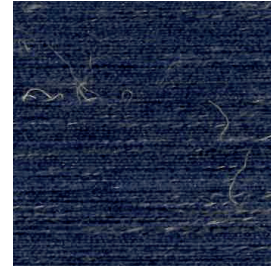
A



214236



214221

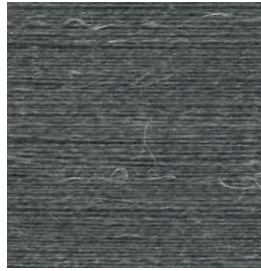


214298

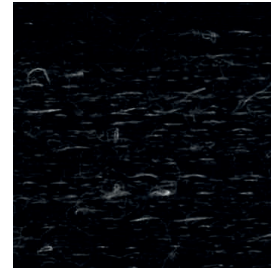
B



214228



214223



214234  
\*

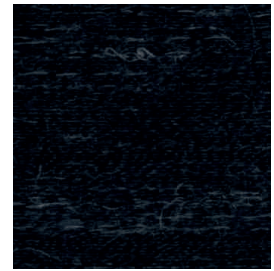
C



214238

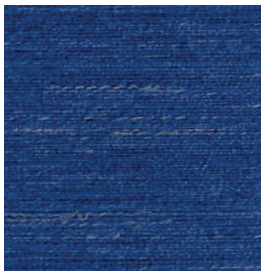


214258



214243

D



214240

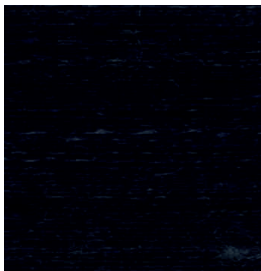


214235

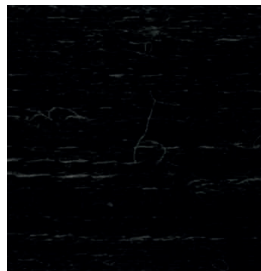


214251

E



029294



214267



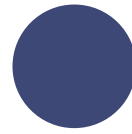
214227  
\*



TANGIBLE BEIGE  
029293



SEALING BARUFFA  
888888



DEEP BLUE  
029294

## INDEX

|          |     |        |     |          |     |
|----------|-----|--------|-----|----------|-----|
| 028440   | 9B  | 214238 | 10C | 214276   | 2A  |
| ⊕ 029293 | 1B  | 214240 | 10D | 214278   | 4A  |
| ⊕ 029294 | 10E | 214243 | 12C | 214279   | 4B  |
| 029295   | 6A  | 214244 | 3A  | 214284   | 1D  |
| 029299   | 8A  | 214248 | 6D  | 214285   | 9A  |
| 029337   | 2C  | 214250 | 4E  | 214287   | 7B  |
| 029338   | 2D  | 214251 | 12D | 214288   | 9C  |
| * 029339 | 4C  | 214252 | 3C  | 214289   | 8C  |
| * 029340 | 4D  | 214253 | 3D  | 214292   | 2B  |
| 029341   | 9E  | 214254 | 6C  | 214293   | 7A  |
| * 214220 | 1A  | 214256 | 3E  | 214294   | 7C  |
| 214221   | 11A | 214258 | 11C | 214295   | 8E  |
| 214222   | 6B  | 214260 | 1C  | 214296   | 9D  |
| 214223   | 11B | 214261 | 1E  | 214297   | 7E  |
| * 214227 | 12E | 214262 | 2E  | 214298   | 12A |
| 214228   | 10B | 214265 | 5E  | 216522   | 8B  |
| 214233   | 6E  | 214267 | 11E | 216525   | 3B  |
| * 214234 | 12B | 214270 | 5B  | 216526   | 5A  |
| 214235   | 11D | 214271 | 5C  | 217379   | 7D  |
| 214236   | 10A | 214272 | 5D  | ⊕ 888888 | 8D  |

\* COLORI DISPONIBILI / AVAILABLE COLOURS