



## BERING

Nm. 2/60

50% (WV) LANA MERINO EXTRAFINE (19,5 µ)  
50% (VI) VISCOSA

\* Colori disponibili

### IMPIEGO

Rettilinea Finezza 16-18 Cotton 30-33 GG 1 Capo

### FINISSAGGIO

Dettagli di finissaggio e scheda tecnica sono disponibili su richiesta.

### QUANTITÀ OTTIMALI

Colori disponibili: a partire da 1 Kg

Collo ideale: Kg 20

Supplementi per colli di peso inferiore.

Colori uniti non stock service o a campione:

Kg. 6-12-16-26-30-36-40-48-55-60-70-100-120-132-144-255

Supplementi: saranno applicati come previsto dalle nostre condizioni generali di vendita.

### NOTA

Data la particolare mista di questo filo, non tutti i toni possono essere riprodotti fedelmente. È possibile inoltre, in alcuni casi, che si manifesti un leggero effetto melange.

### SOLIDITÀ COLORI:

CONFORMITÀ NORMATIVA REACH

CONFORMITÀ NORMATIVA GB 18401

(Categoria B: prodotti a contatto diretto con la pelle)

PER USO IN RIGATO CON COLORI CONTRASTANTI RICHIEDERE SOLIDITÀ SPECIFICA.

Eventuali esigenze particolari andranno specificate all'atto dell'ordine.

Qualora venga confermato un difetto del filo, non saranno riconosciuti danni per quantità smacchinate oltre il 10% in peso della quantità consegnata.



## BERING

Nm. 2/60

50% (WV) EXTRAFINE MERINO WOOL (19,5 µ)  
50% (VI) VISCOSE

\* Available colours

### KNITTING

Flat machine 16-18 Cotton 30-33 GG 1 Ply

### FINISHING

Finishing and product technical details are available on request.

### IDEAL QUANTITIES

Available colours: starting from 1 kg. each

Ideal box: approximately kgs. 20

Surcharge for cartons of inferior weight

Non stock service or custom solid colours.

Kg. 6-12-16-26-30-36-40-48-55-60-70-100-120-132-144-255

Surcharges: will be added according to our general sales conditions.

### NOTE

Due to special composition, it may be difficult to exactly reproduce all requested shades and, occasionally, a slight melange effect may occur.

### COLOURS FASTNESS:

REACH REGULATION

GB 18401 REGULATION COMPLIANCE

(Category B: products directly in contact with the skin)

IN CASE OF STRIPED OR CONTRAST KNITWEAR A SPECIFIC DYEING FASTNESS MUST BE ASKED.

Any other special need should be expressly requested.

If it's confirmed as a yarn defect, we will not accept any claims for any knitted quantity over 10% of the delivered weight.



Associazione Tessile e Salute

I nostri articoli soddisfano tutti i requisiti di Tessile e Salute.

Zegna Baruffa Lane Borgosesia partecipa al progetto Tessile e Salute sostenuto dal Ministero della Salute.

www.tessileesalute.it

Certificato n° 14900021



ID Nr. 4S-100277  
visit 4sustainability.it

1

2

3

A



099054  
\*

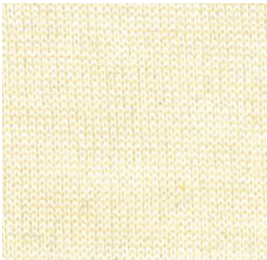


211924



001205  
\*

B



215118



029342



215114

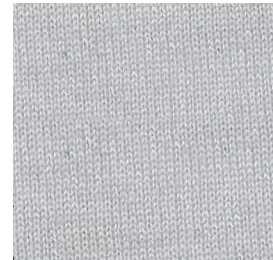
C



029293



215119

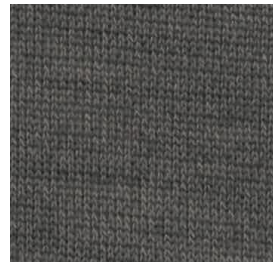


215121

D



290744



215116



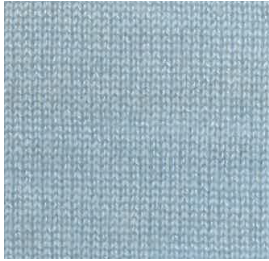
215123

4

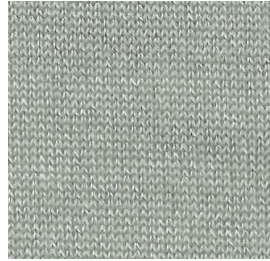
5

6

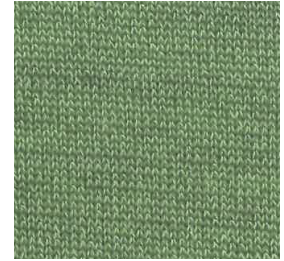
A



028225



255747



215141

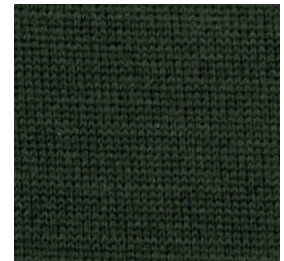
B



205837  
\*



210450

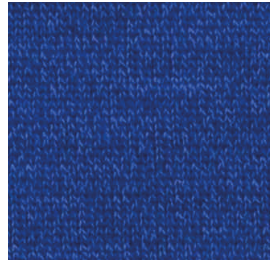


028077

C



215143

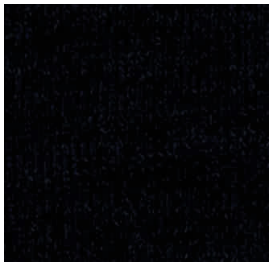


029343  
\*

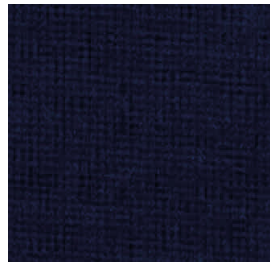


210720

D



029294



212114



008802  
\*

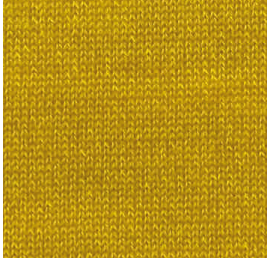


7

8

9

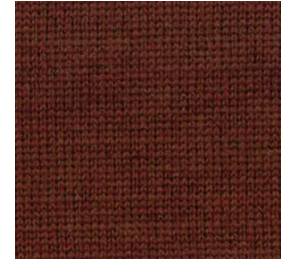
A



255754



255709  
\*

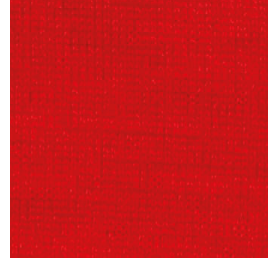


255753

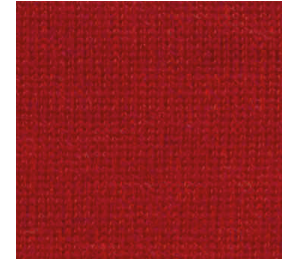
B



027405

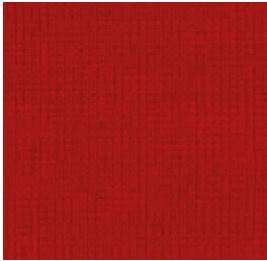


027461

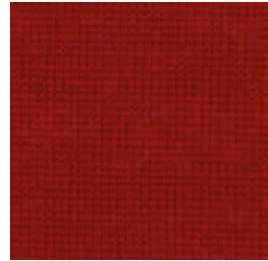


255752

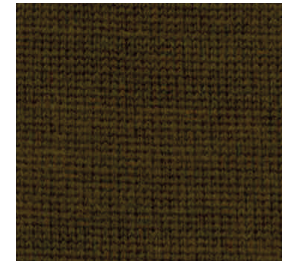
C



888888



255638  
\*

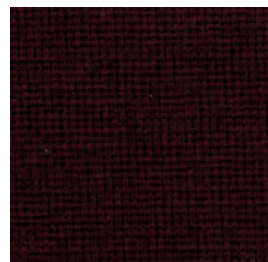


211838

D



029344  
\*



255634



029345

10

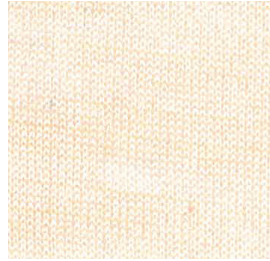
11

12

A



027919



215129



215127

B



210316



215134



215128

C



255673



027333

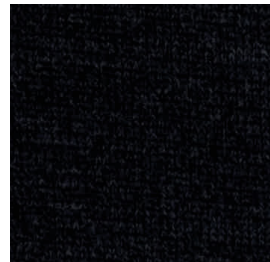


008800  
\*

D



211913



207110



099070  
\*



TANGIBLE BEIGE  
029293



SEALING BARUFFA  
888888



DEEP BLUE  
029294

## INDEX

* 001205	3A	* 099070	12D	215127	12A
* 008800	12C	* 205837	4B	215128	12B
* 008802	6D	207110	11D	215129	11A
027333	11C	210316	10B	215134	11B
027405	7B	210450	5B	215141	6A
027461	8B	210720	6C	215143	4C
027919	10A	211838	9C	255634	8D
028077	6B	211913	10D	* 255638	8C
028225	4A	211924	2A	255673	10C
⊕ 029293	1C	212114	5D	* 255709	8A
⊕ 029294	4D	215114	3B	255747	5A
029342	2B	215116	2D	255752	9B
* 029343	5C	215118	1B	255753	9A
* 029344	7D	215119	2C	255754	7A
029345	9D	215121	3C	290744	1D
* 099054	1A	215123	3D	⊕ 888888	7C

\*: colori disponibili / available colours