

DIAMANTE

Nm. 2/28 - 2/52

70% (WV) LANA MERINO EXTRAFINE (19,5 µ)

20% (SE) SETA

10% (WS) CASHMERE

Colori Uniti - Melanges - **Ecolours**

Nm. 2/28: * Colori Disponibili

Impiego: Macchina Rettilezza fin. 12-14 Cotton 21-24 gg.

Nm. 2/52: ▲ Colori Disponibili

Impiego: Macchina Rettilezza fin. 16-18 Cotton 30 gg.

GOLD

Nm. 2/48 - Nm. 2/80 - Nm. 3/80

70% (WS) CASHMERE

30% (SE) SETA

Colori Uniti - Melanges - **Ecolours**

Nm. 2/48: ■ Colori Disponibili

Impiego: Macchina Rettilezza fin. 16-18 Cotton 30 gg.

Nm. 2/80 - Nm. 3/80: ◆ Colori Disponibili

Impiego 2/80: Macchina Rettilezza fin. 18-21 Cotton 33-37-42 gg.

Impiego 3/80: Macchina Rettilezza fin. 16-18 Cotton 30 gg.

FINISSAGGIO:

Dettagli di finissaggio sono disponibili su richiesta.

QUANTITÀ OTTIMALI

Colori disponibili: a partire da kg. 1,

collo ideale kg. 24 ca.

Supplementi per colli di peso inferiore.

Colori uniti non disponibili o a campione:

kg. 6 - 9 - 12 - 16 - 24 - 30 - 40 - 60 - 73 - 100 - 150 - 300 - 600

Le quantità ottimali per gli Ecolours sono suscettibili di variazione; verificare in fase di richiesta.

SOLIDITÀ COLORI:

CONFORMITÀ NORMATIVA REACH

CONFORMITÀ NORMATIVA GB 18401

(Categoria B: prodotti a contatto diretto con la pelle)

Per uso in rigato con colori contrastanti richiedere solidità specifica per rigatura.

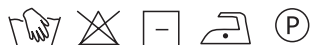
La caratteristica "ECO" di questi prodotti, non ne consente l'utilizzo in rigato a forte contrasto. Eventuali esigenze particolari andranno specificate all'atto dell'ordine.

N.B.

Alcuni Ecolours presentano un leggero effetto melange dato dalla pregiata mista.

I colori con effetto sablé devono essere considerati a titolo indicativo, in quanto la loro riproduzione può variare a seconda della composizione del filo sul quale gli stessi vengono tinti. E' bene pertanto tenere in considerazione che non siamo sempre in grado di garantire una perfetta e fedele riproduzione del colore rispetto al campione di riferimento.

Per capi rigati lavare a secco



In case of striped knitwear drycleaning is recommended

DIAMANTE

Nm. 2/28 - Nm. 2/52

70% (WV) EXTRAFINE MERINO WOOL (19,5 µ)

20% (SE) SILK

10% (WS) CASHMERE

Solid - Melanges - **Ecolours**

Nm. 2/28: * Available Colours

Applications: Flat machine 12-14 Cotton 21-24 gg.

Nm. 2/52: ▲ Available Colours

Applications: Flat machine 16-18 Cotton 30 gg.

GOLD

Nm. 2/48 - Nm. 2/80 - Nm. 3/80

70% (WS) CASHMERE

30% (SE) SILK

Solid - Melanges - **Ecolours**

Nm. 2/48: ■ Available Colours

Applications: Flat machine 16-18 Cotton 30 gg.

Nm. 2/80 - Nm. 3/80: ◆ Available Colours

Applications 2/80: Flat machine 18-21 Cotton 33-37-42 gg.

Applications 3/80: Flat machine 16-18 Cotton 30 gg.

FINISHING:

Finishing details are available on request.

IDEAL QUANTITIES:

Available colours: starting from 1 kg. each,

standard box approximately kgs. 24

Surcharge for cartons of inferior weight.

Non available or custom solid colours:

kgs. 6 - 9 - 12 - 16 - 24 - 30 - 40 - 60 - 73 - 100 - 150 - 300 - 600

The optimal quantities for Ecolours are subject to variation; check them in the request phase.

COLOURS FASTNESS:

REACH REGULATION

GB 18401 REGULATION COMPLIANCE

(Category B: products directly in contact with the skin)

In case of striped or contrast knitwear a specific dyeing fastness must be asked.

The Eco characteristic of these products, does not allow the use for stripes with strong contrast of colours. Any other special need should be expressly requested.

N.B.

Some Ecolours have a slight melange effect given by the precious blend of this yarn.

The sablé colours have to be considered as an indication, as their reproduction can vary depending on the composition of the yarn on which they are dyed, please note that we are not always able to guarantee a perfect and faithful colour reproduction.



Associazione Tessile e Salute

I nostri articoli soddisfano tutti i requisiti di Tessile e Salute.

Zegna Baruffa Lane Borgosesia partecipa al progetto

Tessile e Salute sostenuto dal Ministero della Salute.

www.tessileesalute.it

Certificato n° 14900021



ID Nr. 4S-100277
visit 4sustainability.it



1

2

3

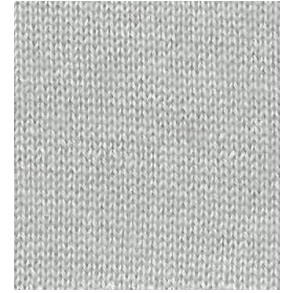
A



DIAMANTE
099054
*▲
GOLD
200124
■◆

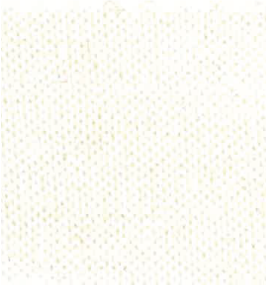


291115

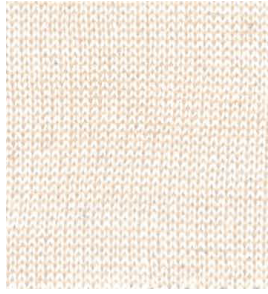


028296

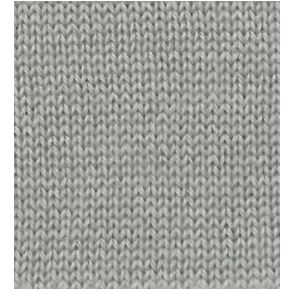
B



001205
*▲■



291114



028138

C



029293



291118



291126

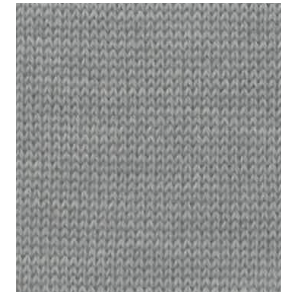
D



291127



216134



028488
◆

E



291116
■



SABLÉ
018795



217738

4

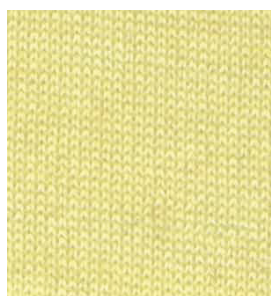
5

6

A



027240
*



291117



028394

B



027132
▲



211831

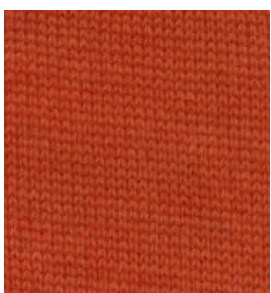


207289

C



SABLÉ
018798



291134



888888



D



028172



204795
*



291163

E



SABLÉ
017153



SABLÉ
017151
*



204803

7

8

9

A



291131

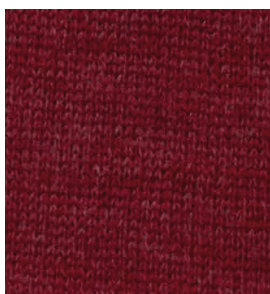


209553



291148

B



291167

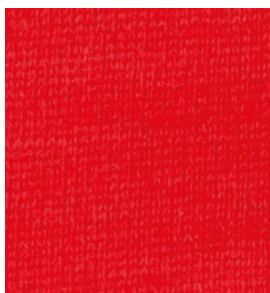


291152



291141

C



291162

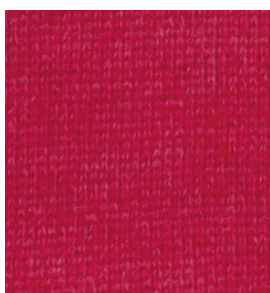


216142



291145

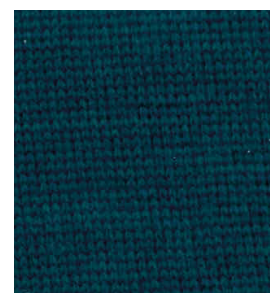
D



291164



SABLÉ
017136

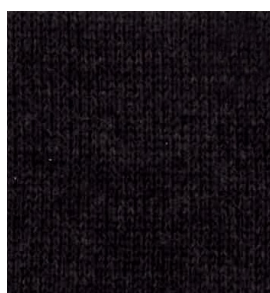


291161

E



291172



SABLÉ
017140



291159

10

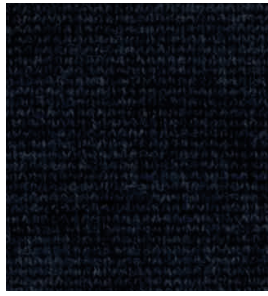
11

12

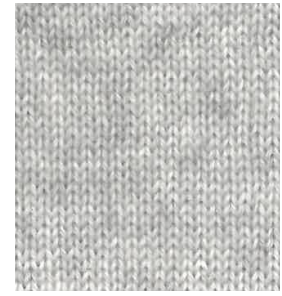
A



291137



291158

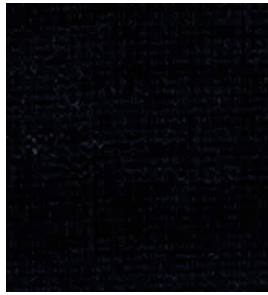


MELANGE
420627
* ▲

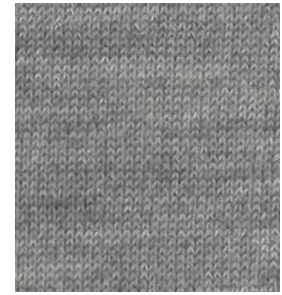
B



291138



029294

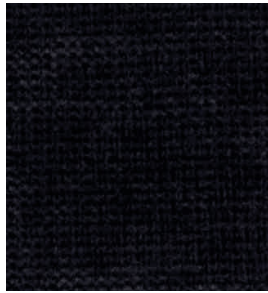


MELANGE
841007
■ ◆

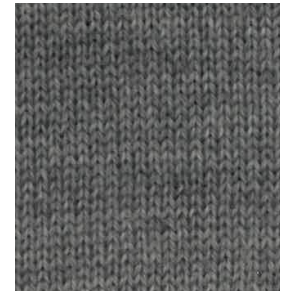
C



291102



027087

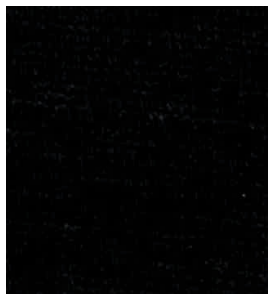


MELANGE
420756
▲

D



028669



291156



MELANGE
841040
■ ◆

E



DIAMANTE
099070
* ▲
GOLD
200123
■ ◆



008800



MELANGE
421257
* ▲



TANGIBLE BEIGE
029293



SEALING BARUFFA
888888



DEEP BLUE
029294

INDEX

	*▲■	001205	1B	■◆	200123	10E	291138	10B
	▲■	008800	11E	■◆	200124	1A	291141	9B
SABLÉ	*▲	017136	8D	*	204795	5D	291145	9C
SABLÉ		017140	8E		204803	6E	291148	9A
SABLÉ	*	017151	5E		207289	6B	291152	8B
SABLÉ		017153	4E	▲	209553	8A	291156	11D
SABLÉ		018795	2E		211831	5B	291158	11A
SABLÉ		018798	4C		216134	2D	291159	9E
		027087	11C		216142	8C	291161	9D
	▲	027132	4B		217738	3E	291162	7C
	*	027240	4A		291102	10C	291163	6D
		028138	3B		291114	2B	291164	7D
		028172	4D		291115	2A	291167	7B
		028296	3A	■	291116	1E	291172	7E
		028394	6A		291117	5A		
	◆	028488	3D		291118	2C	MELANGE *▲	420627 12A
		028669	10D		291126	3C	MELANGE ▲	420756 12C
	⊕	029293	1C		291127	1D	MELANGE *▲	421257 12E
	⊕	029294	11B		291131	7A	MELANGE ■◆	841007 12B
	*▲	099054	1A		291134	5C	MELANGE ■◆	841040 12D
	*▲	099070	10E		291137	10A	⊕	888888 6C

* DIAMANTE 2/28: COLORI DISPONIBILI / AVAILABLE COLOURS

▲ DIAMANTE 2/52: COLORI DISPONIBILI / AVAILABLE COLOURS

■ GOLD 2/48: COLORI DISPONIBILI / AVAILABLE COLOURS

◆ GOLD 2/80 - 3/80: COLORI DISPONIBILI / AVAILABLE COLOURS