



ALPASOFT

Nm. 12000

50% (WV) LANA MERINO EXTRAFINE (19,5 µ)

20% (WP) ALPACA

30% (PA) POLIAMMIDE

Nm. 12000: * Colori Disponibili

Impiego: Rettilinea Finezza 12 Cotton 21-24 GG 1 Capo

ALPAFUR

Nm. 1600

61% (WV) LANA

35% (WP) ALPACA

4% (PA) POLIAMMIDE

Nm. 1600: * Colori Disponibili

Impiego: Rettilinea Finezza 1,5 1 Capo

Trattandosi di un filato fantasia, è necessario considerare uno scarto macchina superiore ad un filato lineare.

Si consiglia di lavorare a due o più guidafile.

FINISSAGGIO

Dettagli di finissaggio sono disponibili su richiesta.

QUANTITÀ OTTIMALI

Colori disponibili: a partire da 1 kg.

Colori fantasia: collo ideale Kg. 20 circa

Supplementi per colli di peso inferiore

Colori uniti o a campione:

kg. 6-16-30-42-63-84-126-252.

I colori tinti in filo potrebbero avere un aspetto meno voluminoso rispetto ai tinti in tops di cartella.

SOLIDITÀ COLORI:

CONFORMITÀ NORMATIVA REACH

CONFORMITÀ NORMATIVA GB 18401

(Categoria B: prodotti a contatto diretto con la pelle)

PER USO IN RIGATO CON COLORI CONTRASTANTI

RICHIEDERE SOLIDITÀ SPECIFICA.

Eventuali esigenze particolari andranno specificate all'atto dell'ordine.

ALPASOFT

Nm. 12000

50% (WV) EXTRAFINE MERINO WOOL (19,5 µ)

20% (WP) ALPACA

30% (PA) POLYAMIDE

Nm. 12000: * Available colours

Applications: Flat Machine 12 FF Cotton 21-24 GG 1 Ply

ALPAFUR

Nm. 1600

61% (WV) WOOL

35% (WP) ALPACA

4% (PA) POLYAMIDE

Nm. 1600: * Available colours

Applications: Flat Machine 1,5 1 Ply

Due to the nature of the fancy yarns it is necessary to consider a greater wastage than classic yarns.

It is advisable to knit using more than one yarn guides.

FINISHING

Finishing details are available on request.

IDEAL QUANTITIES

Available colours: starting from 1 Kg. each

Fancy colours: standard box approximately kgs. 20

Surcharge for cartons of inferior weight.

Non available or custom solid colours:

kgs. 6-16-30-42-63-84-126-252.

Yarn-dyed colours may have a less voluminous look compared to tops-dyed ones.

COLOURS FASTNESS:

REACH REGULATION

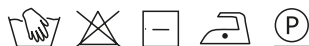
GB 18401 REGULATION COMPLIANCE

(Category B: products directly in contact with the skin)

IN CASE OF STRIPED OR CONTRAST KNITWEAR A

SPECIFIC DYEING FASTNESS MUST BE ASKED.

Any other special need should be expressly requested.



Associazione Tessile e Salute

I nostri articoli soddisfano tutti i requisiti di Tessile e Salute.

Zegna Baruffa Lane Borgosesia partecipa al progetto

Tessile e Salute sostenuto dal Ministero della Salute.

www.tessileesalute.it

Certificato n° 14900021



ID Nr. 4S-100277
visit 4sustainability.it



993654.0
CENTROCOT

ALPASOFT

1

ALPAFUR

2

A



ALPASOFT
001205
*



ALPAFUR
001205
*

B



ALPASOFT
028789
*



ALPAFUR
028789
*

C



ALPASOFT
027751

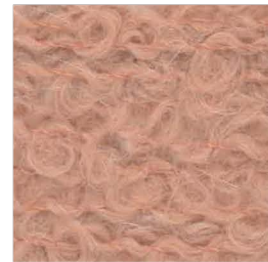


ALPAFUR
028790

D



ALPASOFT
028642
*



ALPAFUR
028575

E



ALPASOFT
028766



ALPAFUR
028766
*

ALPASOFT

3

ALPAFUR

4

A



ALPASOFT
029293



ALPAFUR
029293



B



ALPASOFT
028440



ALPAFUR
028791

C



ALPASOFT
028872



ALPAFUR
211010

D



ALPASOFT
028873



ALPAFUR
213773

E



ALPASOFT
028795



ALPAFUR
620068
*

ALPASOFT

ALPAFUR

5

6

A



ALPASOFT
028486
*



ALPAFUR
204879
*

B



ALPASOFT
028442



ALPAFUR
209306

C



ALPASOFT
028875



ALPAFUR
028784
*

D



ALPASOFT
028874



ALPAFUR
028382

E



ALPASOFT
888888



ALPAFUR
888888



ALPASOFT

7

ALPAFUR

8

A



ALPASOFT
028769



ALPAFUR
028783

B



ALPASOFT
028877



ALPAFUR
018473

C



ALPASOFT
029417



ALPAFUR
018856

D



ALPASOFT
028796
*



ALPAFUR
620062
*

E



ALPASOFT
028810



ALPAFUR
620066
*

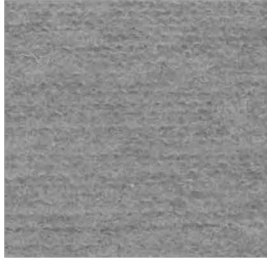
ALPASOFT

9

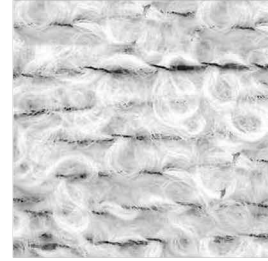
ALPAFUR

10

A

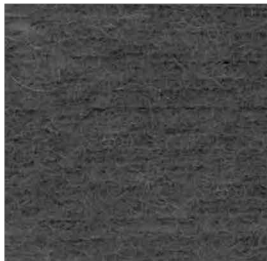


ALPASOFT
028092

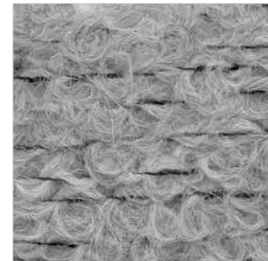


ALPAFUR
620056
*

B

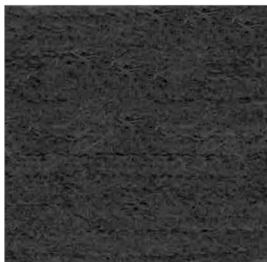


ALPASOFT
026976

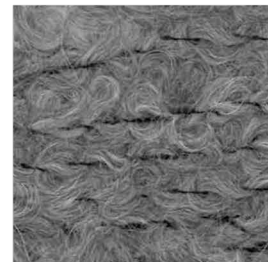


ALPAFUR
630132
*

C

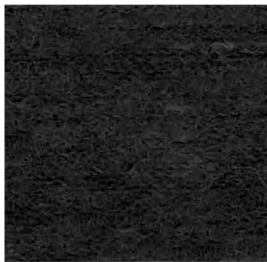


ALPASOFT
028817

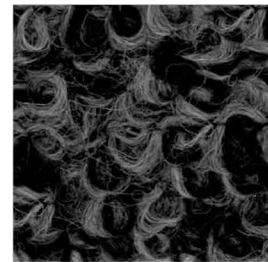


ALPAFUR
620057
*

D



ALPASOFT
028811



ALPAFUR
620058
*

E



ALPASOFT
028813



ALPAFUR
620067
*

ALPASOFT

11

ALPAFUR

12

A



ALPASOFT
028443

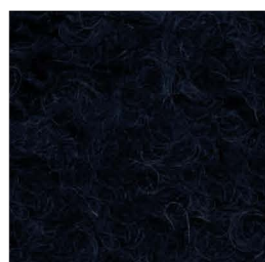


ALPAFUR
028787

B



ALPASOFT
028878



ALPAFUR
025275

C



ALPASOFT
028879



ALPAFUR
620420
*

D



ALPASOFT
029294



ALPAFUR
029294



E



ALPASOFT
099070
*



ALPAFUR
620060



TANGIBLE BEIGE
029293



SEALING BARUFFA
888888



DEEP BLUE
029294

INDEX ALPASOFT

* 001205 1A	028769 7A	028874 5D
026976 9B	* 028789 1B	028875 5C
027751 1C	028795 3E	028877 7B
028092 9A	* 028796 7D	028878 11B
028440 3B	028810 7E	028879 11C
028442 5B	028811 9D	029293 3A
028443 11A	028813 9E	029294 11D
* 028486 5A	028817 9C	029417 7C
* 028642 1D	028872 3C	* 099070 11E
028766 1E	028873 3D	888888 5E

INDEX ALPAFUR

* 001205 2A	* 028789 2B	* 620057 10C
018473 8B	028790 2C	* 620058 10D
018856 8C	028791 4B	620060 12E
025275 12B	029293 4A	* 620062 8D
028382 6D	029294 12D	* 620066 8E
028575 2D	* 204879 6A	* 620067 10E
* 028766 2E	209306 6B	* 620068 4E
028783 8A	211010 4C	* 620420 12C
* 028784 6C	213773 4D	* 630132 10B
028787 12A	* 620056 10A	888888 6E

* Colori disponibili / Available colours