



Botto Poala

SIRIO

Nm. 32.000

84% (WV) LANA MERINO ULTRAFINE (17,5 MICRON)
9% (PA) POLIAMMIDE
7% (PM) POLIESTERE METALLIZZATO LUREX®

NM. 32.000: ● Colori Disponibili

Impiego: Macchina rettilinea fin. 16-18 Cotton 27-30 gg.

FINISSAGGIO:

Dettagli di finissaggio sono disponibili su richiesta.

QUANTITÀ OTTIMALI:

Colori disponibili: a partire da kg. 1,
Collo ideale kg. 24 ca.
Supplementi per colli di peso inferiore
Colori uniti non disponibili o a campione:
kg. 6 - 9 - 16 - 24 - 30 - 40 - 60 - 73 - 100 - 150

È importante notare che, a parità di codice, l'effetto ottico del colore cambia notevolmente a seconda dell'articolo sul quale viene tinto, (Steel - Silver - Gold - Cuivre - Dark) anche a causa del riflesso caldo o freddo del metallo.
Consigliamo di chiedere una prova di laboratorio per colori non presenti in cartella.

SOLIDITÀ COLORI:

Data la composizione del filato le solidità g 18401 (Cina) non sono garantite.
Questi valori non garantiscono l'utilizzo in rigato, specialmente per i forti contrasti.
Eventuali esigenze particolari dovranno essere specificate all'atto dell'ordine.

Per capi rigati lavare a secco



SIRIO

Nm. 32.000

84% (WV) ULTRAFINE MERINO WOOL (17,5 MICRON)
9% (PA) POLYAMIDE
7% (PM) POLYESTER METALLIZED LUREX®

NM. 32.000: ● Available Colours

Application: Flat machine 16-18 Cotton 27-30 gg.

FINISHING:

Finishing details are available on request.

IDEAL QUANTITIES:

Available colours: starting from 1 kg. Each,
standard box approximately kgs. 24.
Surcharge for cartons of inferior weight
Non available or custom solid colours:
kgs. 6 - 9 - 16 - 24 - 30 - 40 - 60 - 73 - 100 - 150

We wish to point out that the visual perception of a colour, will change considerably depending on the type of metal (Steel - Silver - Gold - Cuivre - Dark) used in the composition (due to its warm or cool reflection) even if the colour code is the same.
It is advisable to ask for a lab-dip if you wish to order a colour which is not included in this colour card.

COLOURS FASTNESS:

Due to the yarn composition the GB 18401 (Cina) are not guaranteed.
Some colours might not be suitable for knitting stripes or other knitted pattern if using very contrasting colours.
Any other special fastness should be expressly requested.

In case of striped knitwear drycleaning is recommended



Associazione Tessile e Salute

I nostri articoli soddisfano tutti i requisiti di Tessile e Salute.
Zegna Baruffa Lane Borgosesia partecipa al progetto
Tessile e Salute sostenuto dal Ministero della Salute.

www.tessileesalute.it

Certificato n° 14900021



ID Nr. 4S-100277
visit 4sustainability.it



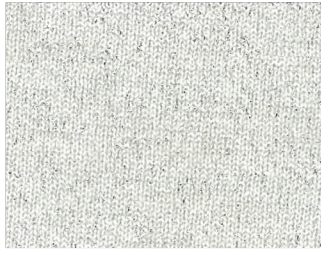
STANDARD
100

993654.0
CENTROCOT

1

2

A



SILVER
219313



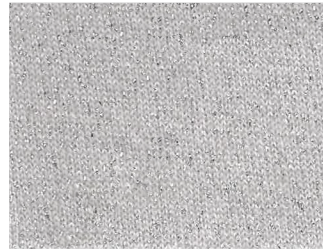
SILVER
210317



B

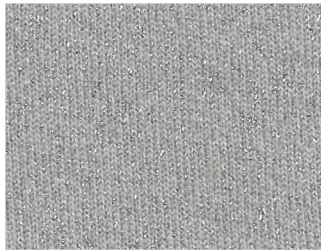


SILVER
028254

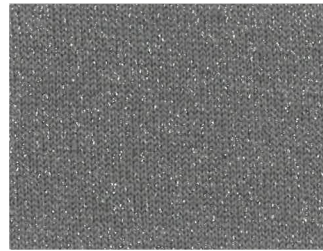


SILVER
210330

C



SILVER
216912

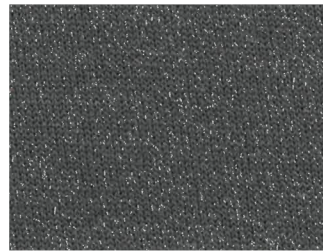


SILVER
027374

D



SILVER
028562



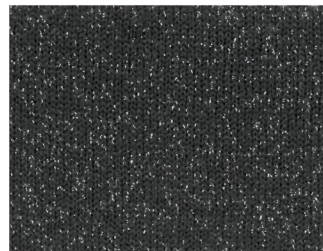
SILVER
028140



E



SILVER
216951

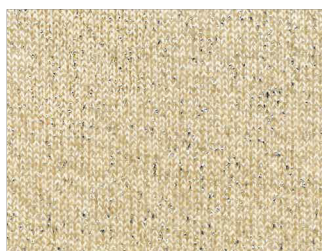


SILVER
028093

3

4

A



GOLD
210317



GOLD
216913

B



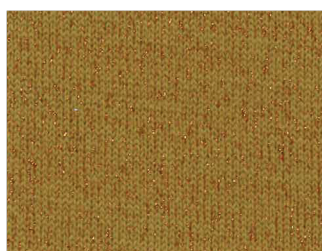
GOLD
216952



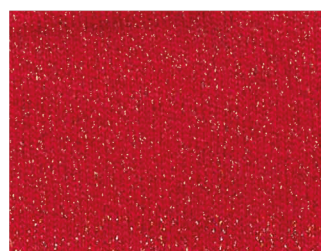
CUIVRE
028367



C



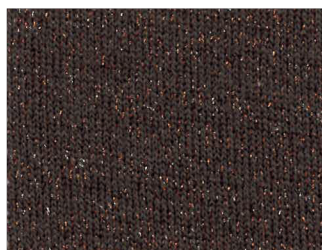
CUIVRE
028821



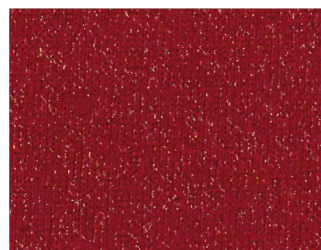
CUIVRE
216954



D



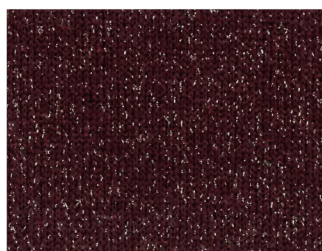
CUIVRE
028350



CUIVRE
028340



E



GOLD
028341



SILVER
028339

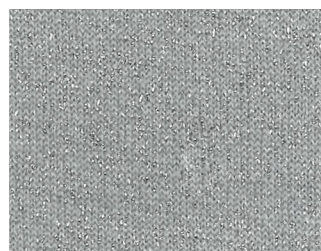
5

6

A



SILVER
210453



SILVER
203785

B



SILVER
027977

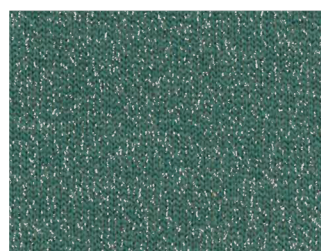


GOLD
216957

C



STEEL
029356



SILVER
781523

D

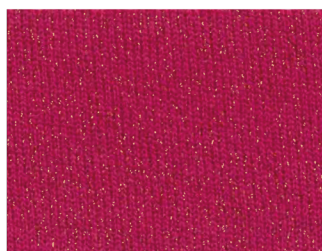


STEEL
029355



GOLD
028396

E



CUIVRE
216953



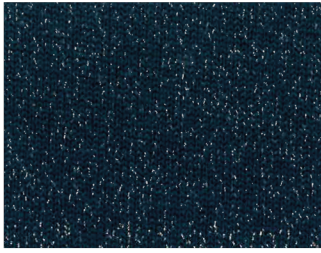
GOLD
216958



7

8

A



SILVER
027295



SILVER
008802

B

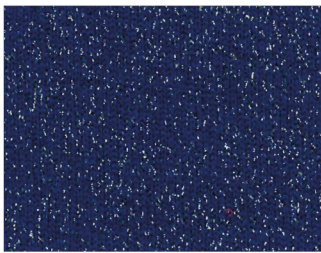


SILVER
028305

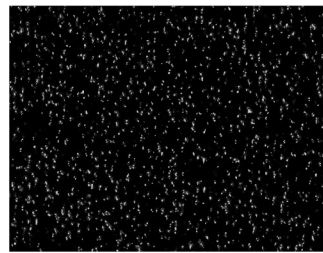


DARK
008802

C



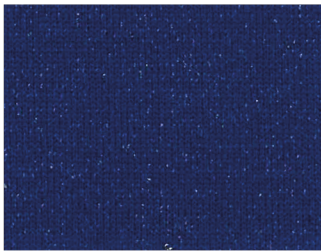
GOLD
216956



SILVER
099070



D



STEEL
216956



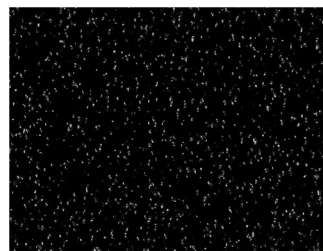
DARK
099070



E



STEEL
029294



GOLD
099070





Botticelli

INDEX

DARK	008802	8B	SILVER ●	099070	8C
SILVER	008802	8A	DARK ●	099070	8D
SILVER	027295	7A	GOLD ●	099070	8E
SILVER	027374	2C	SILVER	203785	6A
SILVER	027977	5B	GOLD ●	210317	3A
SILVER	028093	2E	SILVER ●	210317	2A
SILVER ●	028140	2D	SILVER	210330	2B
SILVER	028254	1B	SILVER	210453	5A
SILVER	028305	7B	SILVER	216912	1C
SILVER	028339	4E	GOLD	216913	4A
CUIVRE ●	028340	4D	SILVER ●	216951	1E
GOLD	028341	3E	GOLD	216952	3B
CUIVRE	028350	3D	CUIVRE	216953	5E
CUIVRE ●	028367	4B	CUIVRE ●	216954	4C
GOLD	028396	6D	GOLD	216956	7C
SILVER	028562	1D	STEEL	216956	7D
CUIVRE ●	028821	3C	GOLD	216957	6B
STEEL	029294	7E	GOLD ●	216958	6E
STEEL	029355	5D	SILVER	219313	1A
STEEL	029356	5C	SILVER	781523	6C



● COLORI DISPONIBILI/AVAILABLE COLOURS