



## CASHWOOL® SWE

Nm. 2/30 - Nm. 2/48

100% (WV) LANA MERINO EXTRAFINE (19,5 µ)

Nm. 2/30

Impiego: Rettilezza Finezza 12-14 Cotton 21-24 gg 1 capo

Nm. 2/48 ● Colori disponibili

Impiego: Rettilezza Finezza 16-18 Cotton 27-30 gg 1 capo



## CASHWOOL® SWE

Nm. 2/30 - Nm. 2/48

100% (WV) EXTRAFINE MERINO WOOL (19,5 µ)

Nm. 2/30

Applications: Flat Machine 12-14 F.F. Cotton 21-24 gg 1 Ply

Nm. 2/48 ● Available colours

Applications: Flat Machine 16-18 F.F. Cotton 27-30 gg 1 Ply



**SUPERMELANGE:** Effetti cromatici mélange ottenuti grazie allo sviluppo di una tecnologia speciale che consente una diversa e più completa miscelatura delle fibre colorate.

**SUPERMELANGE:** Mélange colour effects, achieved by using a special technology that enables us to create new different and better blends of coloured fibres.

### FINISSAGGIO

Dettagli di finissaggio disponibili su richiesta.

### FINISHING

Finishing details are available on request.

### QUANTITÀ OTTIMALI

Colori disponibili: a partire da Kg. 1

Collo ideale: Kg. 24 circa

Supplementi per colli di peso inferiore.

Colori uniti non stock service o a campione:

kg. 9-18-30-45-70-100-160-320-630.

### IDEAL QUANTITIES

Available colours: starting from 1 Kg. each.

Standard box: approximately kgs. 24

Surcharge for cartons of inferior weight.

Non stock service or custom solid colours:

kgs. 9-18-30-45-70-100-160-320-630.

### SOLIDITÀ COLORI:

CONFORMITÀ NORMATIVA REACH

CONFORMITÀ NORMATIVA GB 18401

(Categoria B: prodotti a contatto diretto con la pelle)

PER USO IN RIGATO CON COLORI CONTRASTANTI

RICHIEDERE SOLIDITÀ SPECIFICA.

Eventuali esigenze particolari andranno specificate all'atto dell'ordine.

### COLOURS FASTNESS:

REACH REGULATION

GB 18401 REGULATION COMPLIANCE

(Category B: products directly in contact with the skin)

IN CASE OF STRIPED OR CONTRAST KNITWEAR A

SPECIFIC DYEING FASTNESS MUST BE ASKED.

Any other special need should be expressly requested.

Lavabile in lavatrice

Easy care



Machine washable

Easy care

Il filato Cashwool® SWE raggiunge gli standard previsti da Woolmark per la marcatura "Total Easy Care" pertanto se il maglificio esegue una corretta tessitura, confezione e finissaggio secondo le indicazioni Woolmark è adatto a produrre maglieria "Total Easy Care".

Cashwool® SWE yarn meets Woolmark standards for "Total Easy Care" labelling, therefore it is suitable to produce "Total Easy Care" garments if the knitter ensures proper knitting, linking and finishing, according to Woolmark instructions.

Lavabile in lavatrice

e asciugabile in tumbler

Total easy care



Machine washable

and tumble dry

Total easy care



Associazione Tessile e Salute

I nostri articoli soddisfano tutti i requisiti di Tessile e Salute.

Zegna Baruffa Lane Borgosesia partecipa al progetto

Tessile e Salute sostenuto dal Ministero della Salute.

www.tessileesalute.it

Certificato n° 14900021



ID Nr. 4S-100277  
visit 4sustainability.it



OEKO-TEX®

CONFIDENCE IN TEXTILES

STANDARD 100

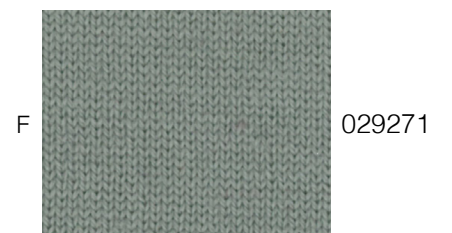
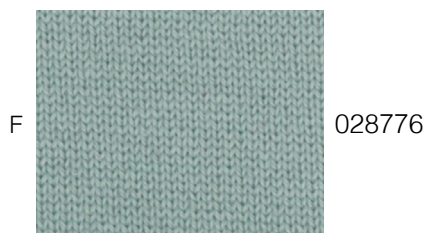
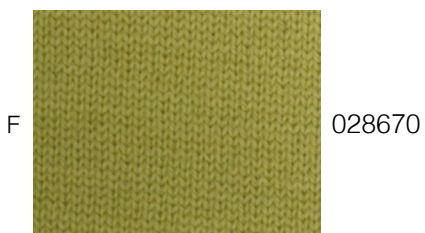
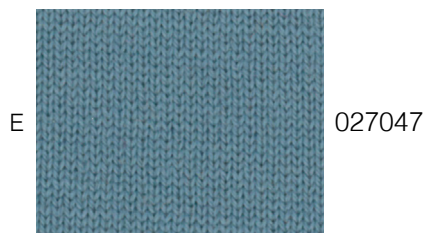
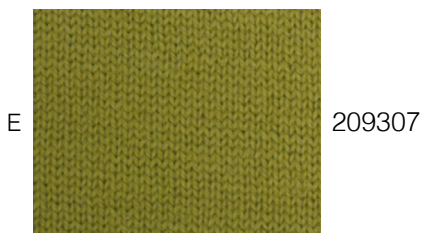
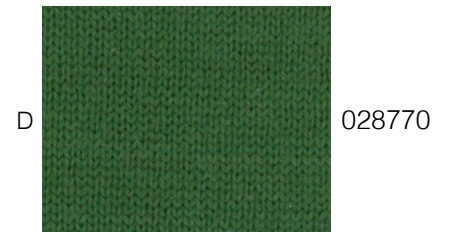
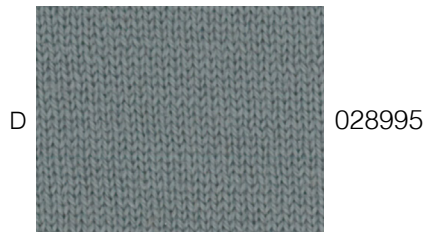
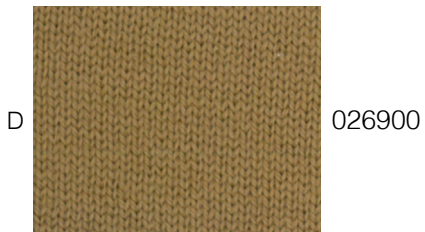
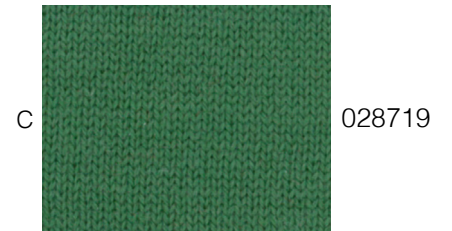
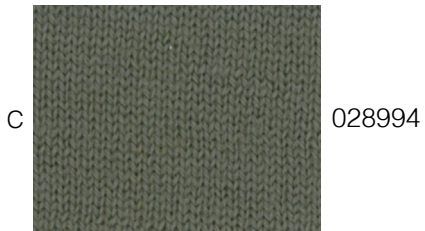
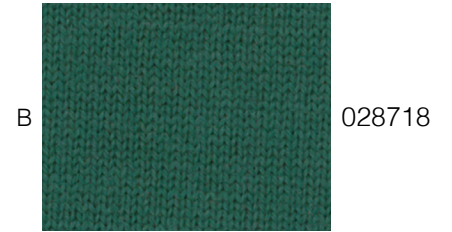
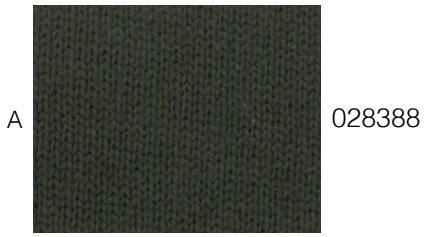
071973.O CENTROCOT

Tested for harmful substances,  
www.oeko-tex.com/standard100

1

2

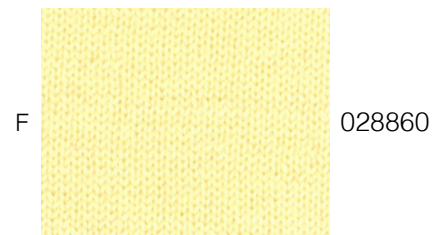
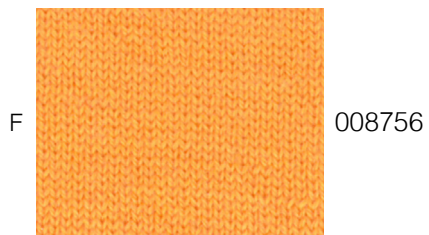
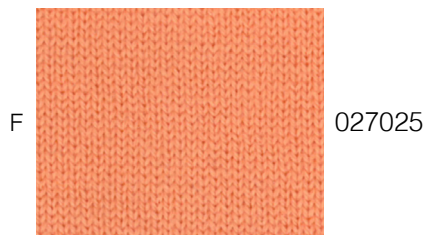
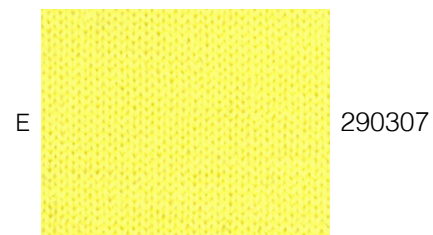
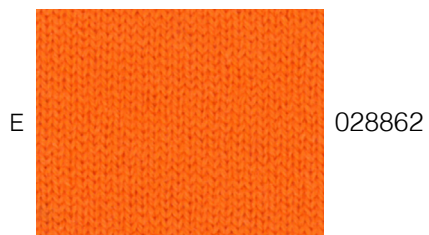
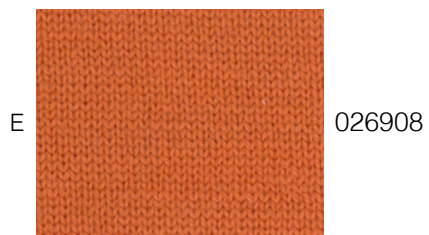
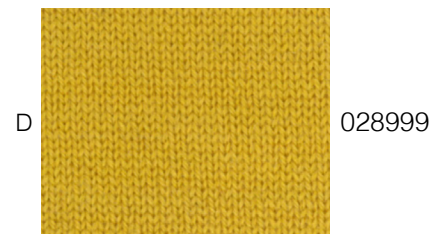
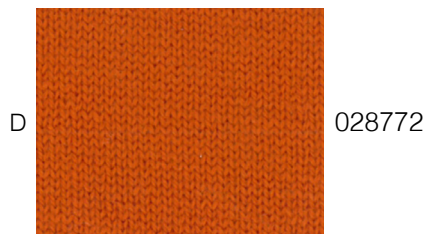
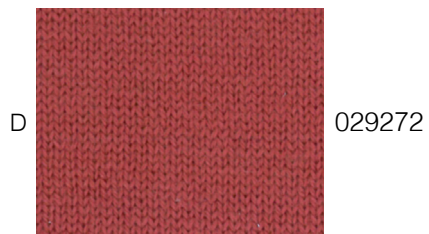
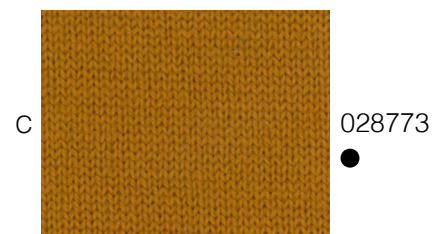
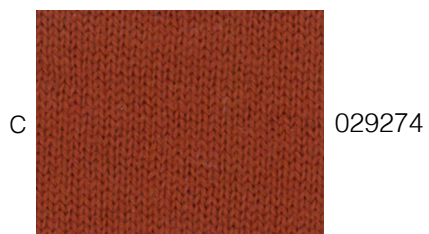
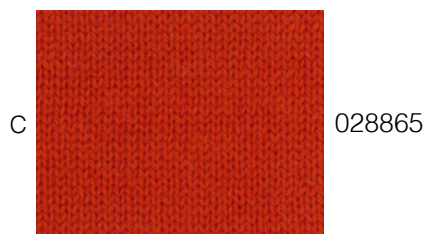
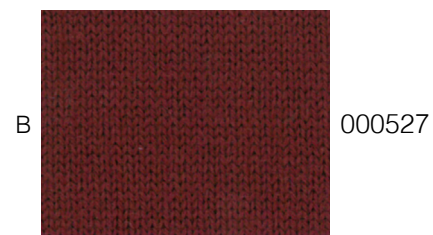
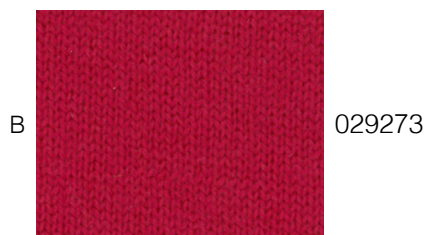
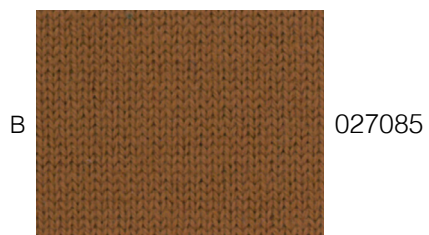
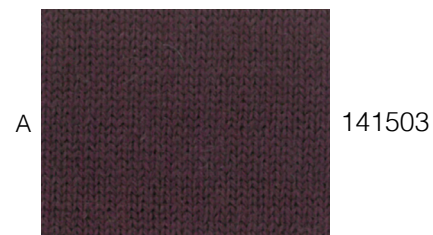
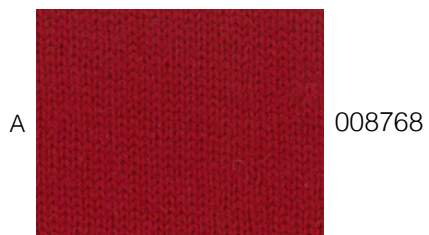
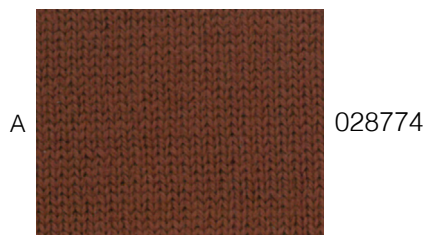
3



4

5

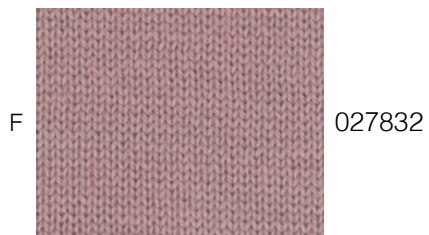
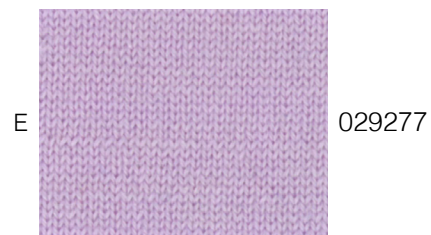
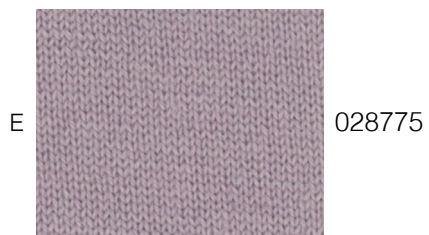
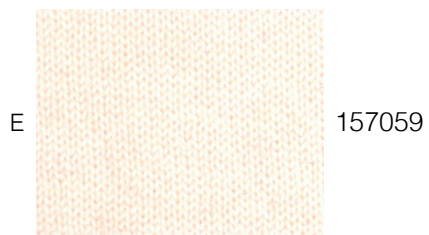
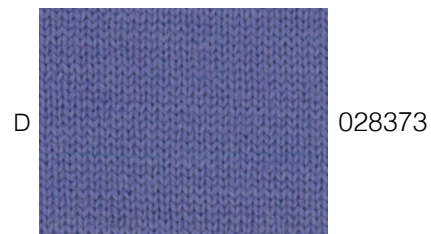
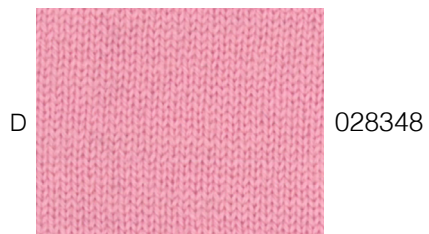
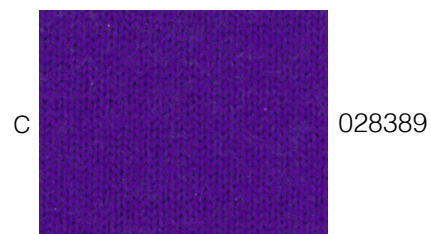
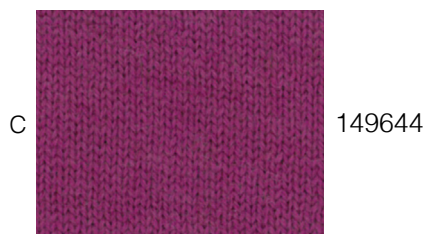
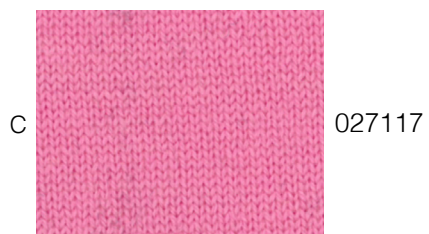
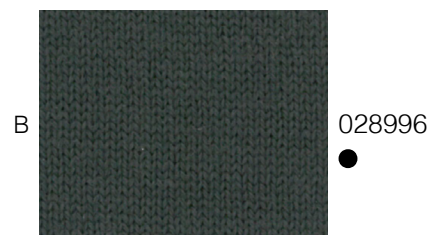
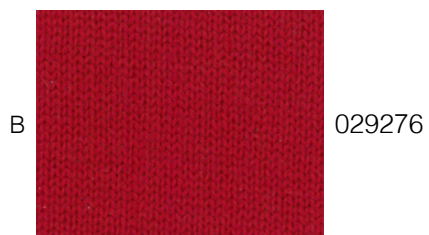
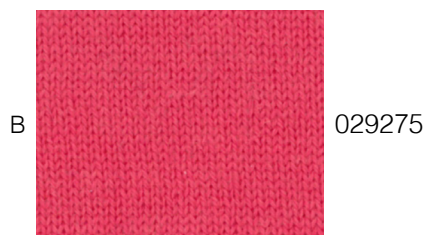
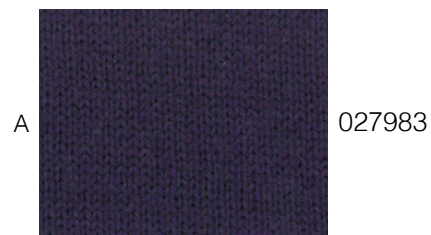
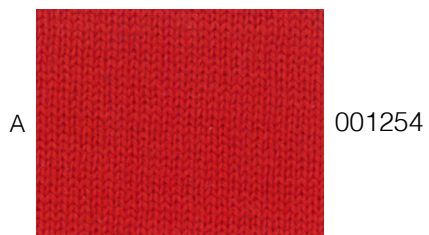
6



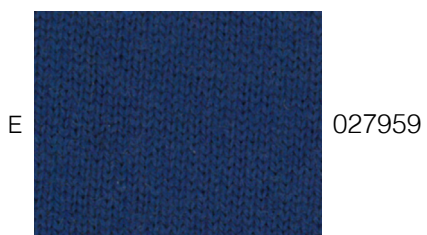
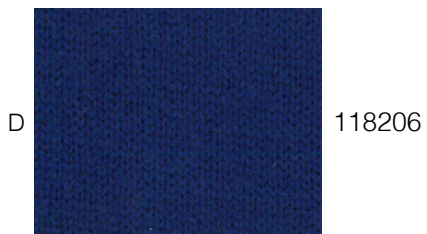
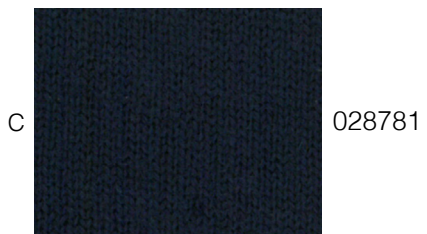
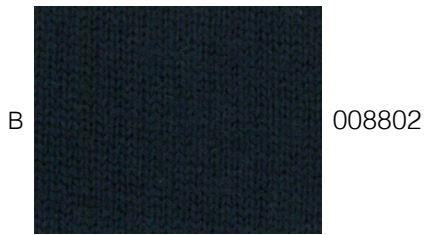
7

8

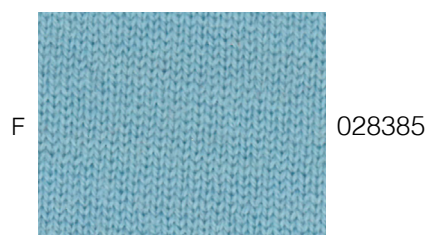
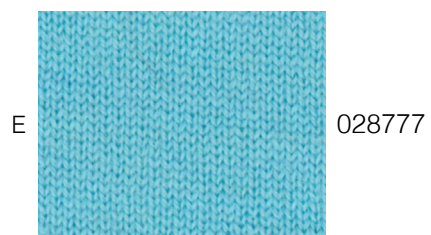
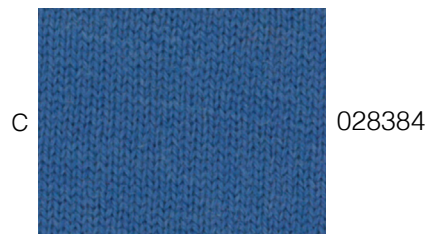
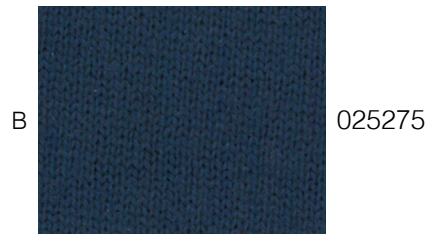
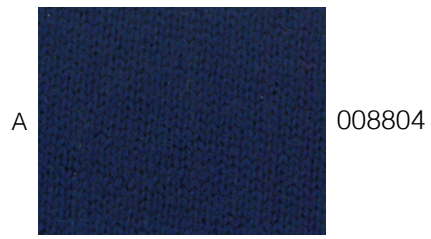
9



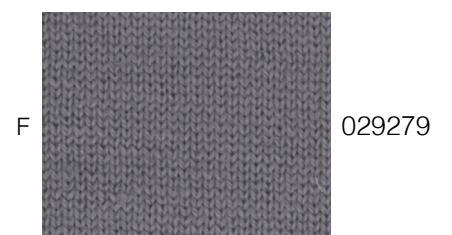
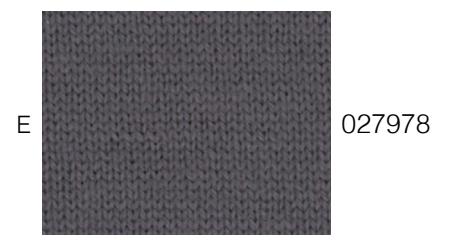
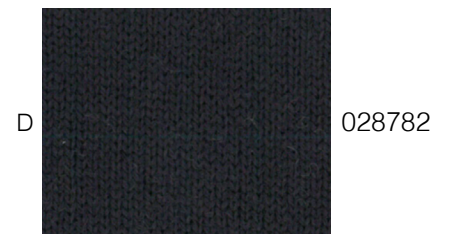
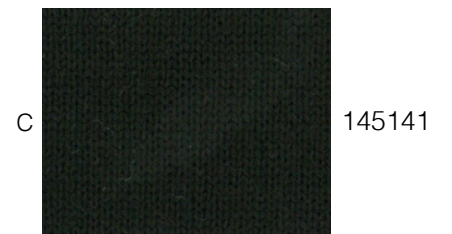
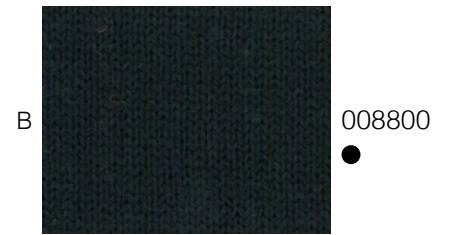
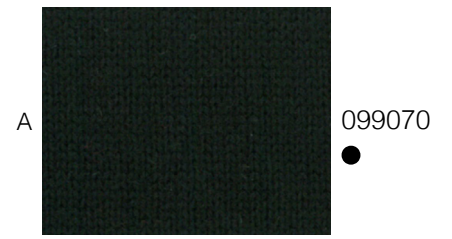
10



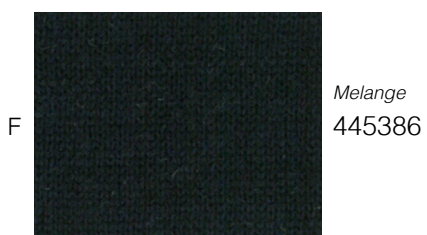
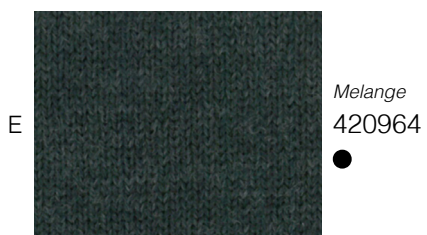
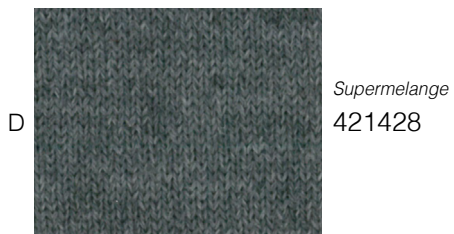
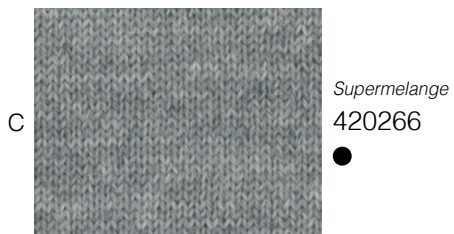
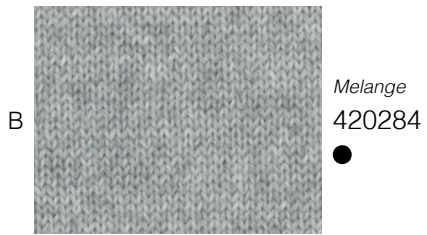
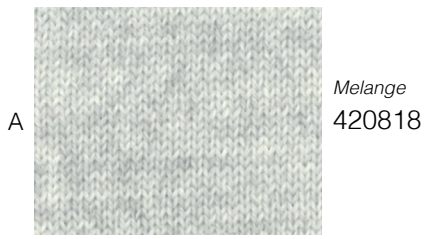
11



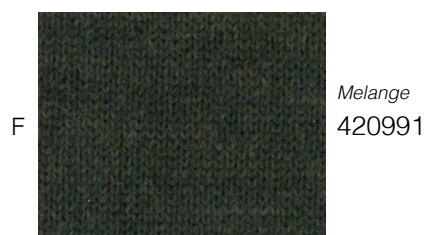
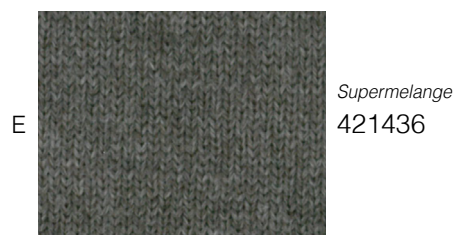
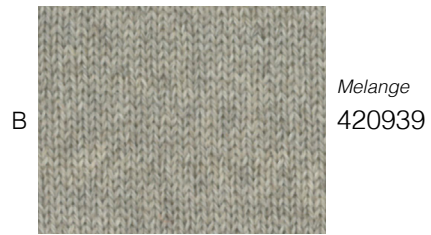
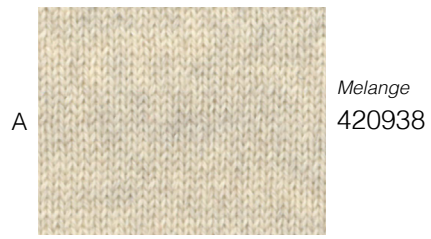
12



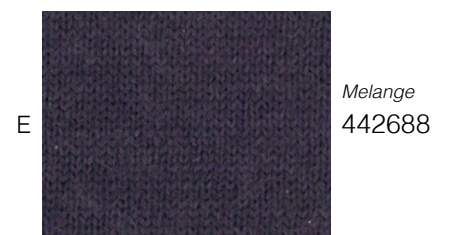
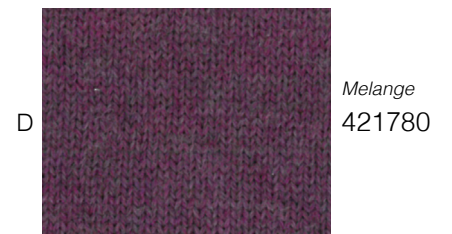
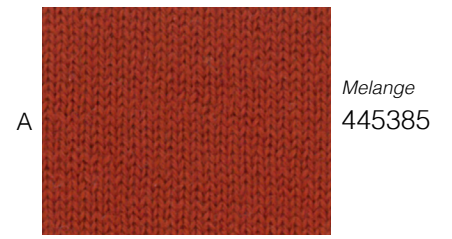
13



14



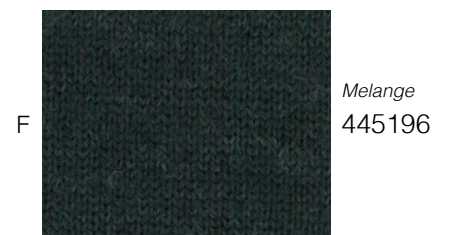
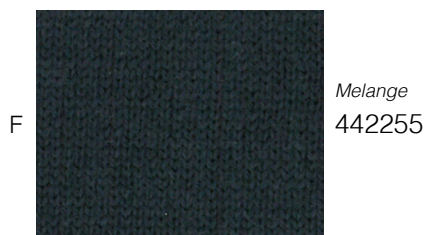
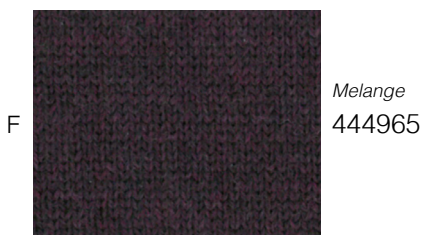
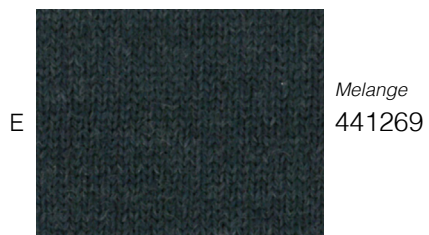
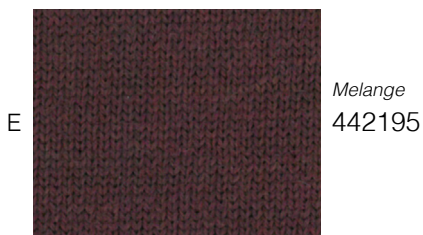
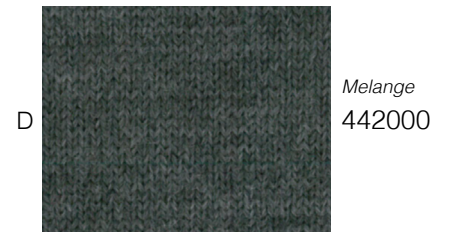
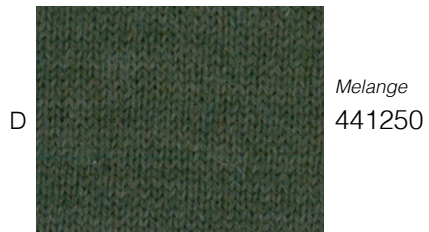
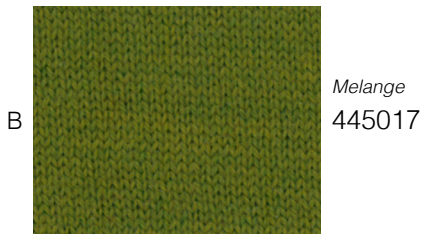
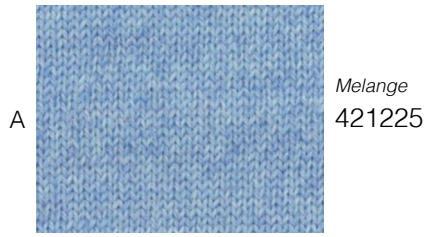
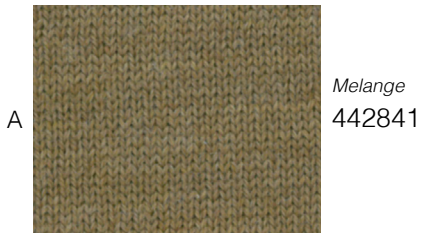
15



16

17

18



## INDEX

---

000527 6B	● 028773 6C	Supermelange	● 420266 13C
● 001205 7F	028774 4A	Melange	● 420284 13B
001254 8A	028775 8E	Melange	● 420426 18E
008756 5F	028776 2F	Melange	420818 13A
● 008764 7A	028777 11E	Melange	420938 14A
008768 5A	028780 10F	Melange	420939 14B
● 008800 12B	028781 10C	Melange	● 420964 13E
008802 10B	028782 12D	Melange	420991 14F
008804 11A	028860 6F	Melange	421225 17A
025275 11B	028862 5E	Supermelange	421425 14C
026900 1D	028865 4C	Supermelange	421428 13D
026908 4E	028994 1C	Supermelange	421436 14E
027025 4F	028995 2D	Supermelange	421612 17B
027047 2E	● 028996 9B	Melange	421780 15D
027085 4B	028999 6D	Melange	● 440988 14D
027117 7C	029270 1B	Melange	441250 17D
027218 2A	029271 3F	Melange	441269 17E
027832 8F	029272 4D	Melange	441316 16D
027959 10E	029273 5B	Melange	441410 18A
027978 12E	029274 5C	Melange	441702 18B
027983 9A	029275 7B	Melange	441706 18C
028111 3E	029276 8B	Melange	441875 17C
028154 3A	029277 9E	Melange	441959 16C
● 028156 2C	029278 11D	Melange	442000 18D
028332 8D	029279 12F	Melange	442195 16E
028348 7D	● 099054 9F	Melange	442196 15C
028373 9D	● 099070 12A	Melange	442255 17F
028384 11C	118206 10D	Melange	442483 15B
028385 11F	141503 6A	Melange	442688 15E
028388 1A	145141 12C	Melange	442841 16A
028389 9C	149644 8C	Melange	444953 15F
028670 1F	156277 2B	Melange	444965 16F
028718 3B	157059 7E	Melange	445017 16B
028719 3C	● 161666 10A	Melange	445196 18F
028770 3D	209307 1E	Melange	445385 15A
028772 5D	290307 6E	Melange	445386 13F

● CASHWOOL® SWE 2/48: Colori disponibili / Available colours