

## CASQUETTE

Nm. 1/15

100% (WV) LANA MERINO ULTRAFINE (17,5 µ)

Nm. 1/15: ● Colori Disponibili

Impiego: Rettilinea Finezza 12-21



1 Capo

## NEO CASQUETTE

Nm. 1/15

90% (WV) LANA MERINO ULTRAFINE (17,5 µ)

10% (WS) CASHMERE

Nm. 1/15: \* Colori Disponibili

Impiego: Rettilinea Finezza 12-21

1 Capo

## FINISSAGGIO

Dettagli di finissaggio sono disponibili su richiesta.

## QUANTITÀ OTTIMALI

Colori disponibili: a partire da 1 kg.

Collo ideale Kg. 20 circa

Supplementi per colli di peso inferiore

Colori uniti o a campione:

kg. 6-16-30-36-48-55-63-84-125-250.

## SOLIDITÀ COLORI:

CONFORMITÀ NORMATIVA REACH

CONFORMITÀ NORMATIVA GB 18401

(Categoria B: prodotti a contatto diretto con la pelle)

PER USO IN RIGATO CON COLORI CONTRASTANTI

RICHIEDERE SOLIDITÀ SPECIFICA.

Eventuali esigenze particolari andranno specificate all'atto dell'ordine.

Qualora venga confermato un difetto del filo, non saranno riconosciuti danni per quantità smacchinate oltre il 10% in peso della quantità consegnata.

## CASQUETTE

Nm. 1/15

100% (WV) ULTRAFINE MERINO WOOL (17,5 µ)

Nm. 1/15: ● Available colours

Applications: Flat Machine 12-21



1 Ply

## NEO CASQUETTE

Nm. 1/15

90% (WV) ULTRAFINE MERINO WOOL (17,5 µ)

10% (WS) CASHMERE

Nm. 1/15: \* Available colours

Applications: Flat Machine 12-21

1 Ply

## FINISHING

Finishing details are available on request.

## IDEAL QUANTITIES

Available colours: starting from 1 Kg. each

Standard box approximately kgs. 20

Surcharge for cartons of inferior weight.

Non available or custom solid colours:

kgs. 6-16-30-36-48-55-63-84-125-250.

## COLOURS FASTNESS:

REACH REGULATION

GB 18401 REGULATION COMPLIANCE

(Category B: products directly in contact with the skin)

IN CASE OF STRIPED OR CONTRAST KNITWEAR A

SPECIFIC DYEING FASTNESS MUST BE ASKED.

Any other special need should be expressly requested.

If it's confirmed as a yarn defect, we will not accept any claims for any knitted quantity over 10% of the delivered weight.



Associazione Tessile e Salute

I nostri articoli soddisfano tutti i requisiti di Tessile e Salute.

Zegna Baruffa Lane Borgosesia partecipa al progetto

Tessile e Salute sostenuto dal Ministero della Salute.

[www.tessileesalute.it](http://www.tessileesalute.it)

Certificato n° 14900021



ID Nr. 4S-100277  
visit [4sustainability.it](http://4sustainability.it)



1

2

3

A



099054



029293



MELANGE  
860509

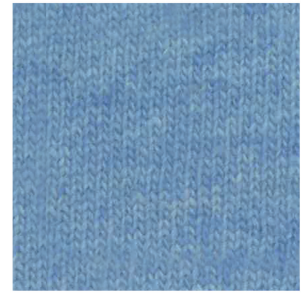
B



MELANGE  
860506  
\*

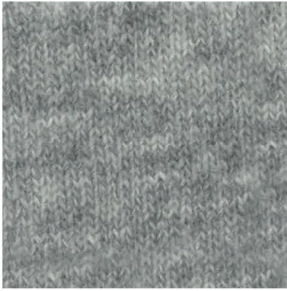


MELANGE  
860502



MELANGE  
860510

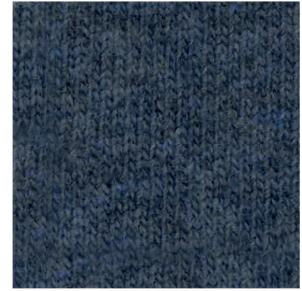
C



MELANGE  
840602  
●



MELANGE  
860503  
●



MELANGE  
860511

D



MELANGE  
860507



MELANGE  
860504  
\*



MELANGE  
860512

E



MELANGE  
860508



MELANGE  
860505



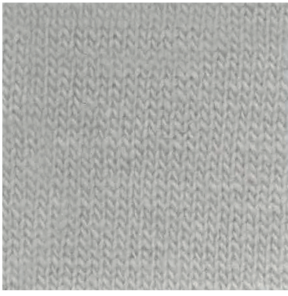
029491

4

5

6

A



029480

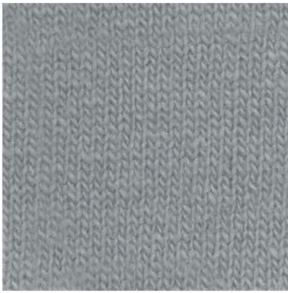


001205

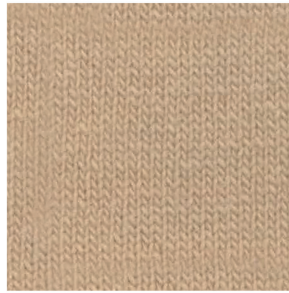


029479

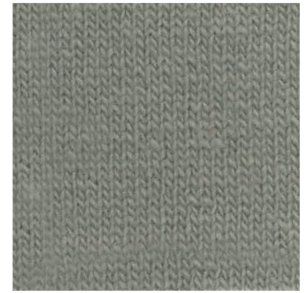
B



029508

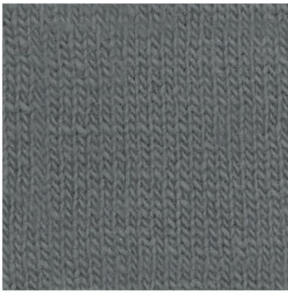


029483



029481

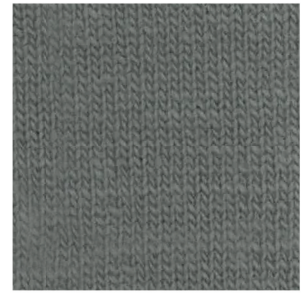
C



029510



029484



029509

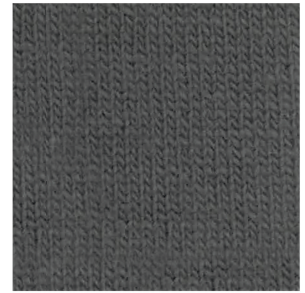
D



029511



029485



029482

E



099070



029486



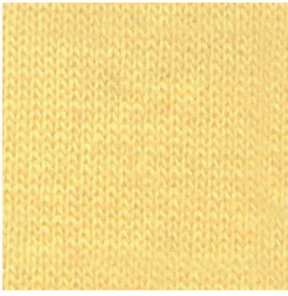
029487

7

8

9

A



029477

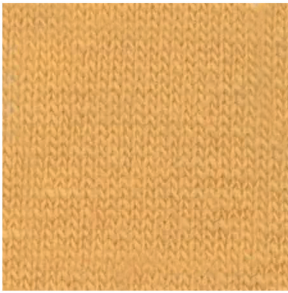


029503

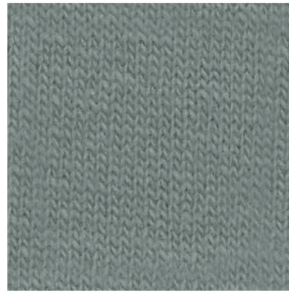


029476

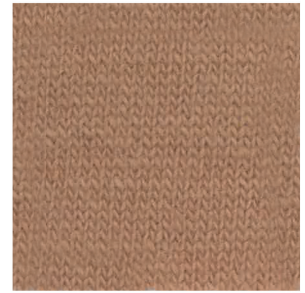
B



029492



029489



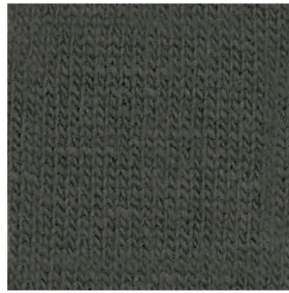
029478



C



029500

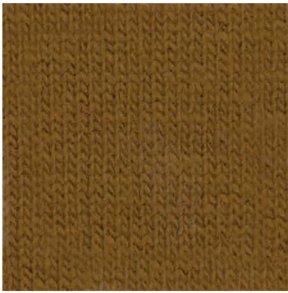


029502



029498

D



029501



029490



785425

E

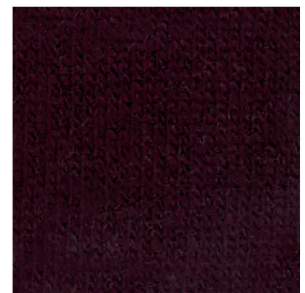


785420



008802

\*



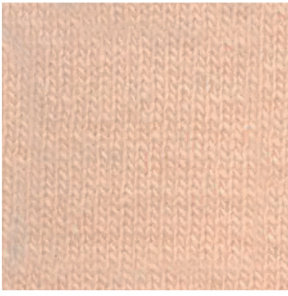
029499

10

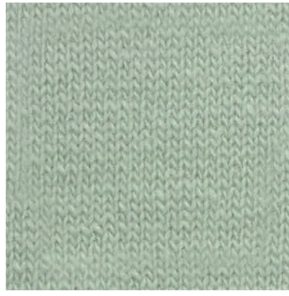
11

12

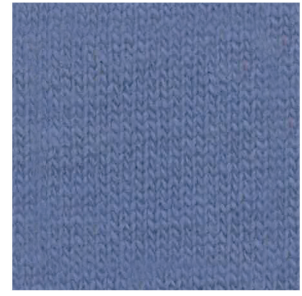
A



785426

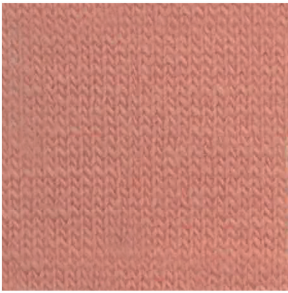


029488

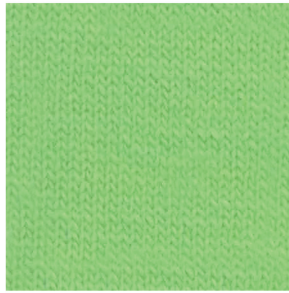


785422

B



029496



029504

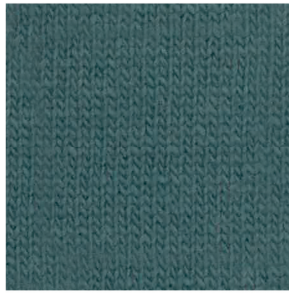


785421

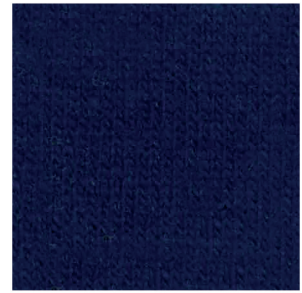
C



029493



029505



029507

D



888888



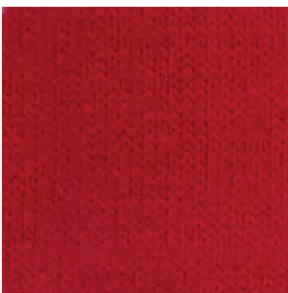
029506



029294



E



008764



MELANGE  
860513



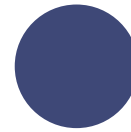
008800



TANGIBLE BEIGE  
029293





SEALING BARUFFA  
888888



DEEP BLUE  
029294

## INDEX

● 001205 5A	029490 8D	● 099070 4E
008764 10E	029491 3E	785420 7E
008800 12E	029492 7B	785421 12B
* 008802 8E	029493 10C	785422 12A
029293 2A 	029496 10B	785425 9D
029294 12D 	029498 9C	785426 10A
029476 9A	029499 9E	MELANGE ● 840602 1C
029477 7A	029500 7C	MELANGE ● 860502 2B
● 029478 9B	029501 7D	MELANGE ● 860503 2C
029479 6A	029502 8C	MELANGE * 860504 2D
029480 4A	029503 8A	MELANGE 860505 2E
029481 6B	029504 11B	MELANGE * 860506 1B
029482 6D	029505 11C	MELANGE 860507 1D
029483 5B	029506 11D	MELANGE 860508 1E
029484 5C	029507 12C	MELANGE 860509 3A
029485 5D	029508 4B	MELANGE 860510 3B
029486 5E	029509 6C	MELANGE 860511 3C
029487 6E	029510 4C	MELANGE 860512 3D
029488 11A	029511 4D	MELANGE 860513 11E
029489 8B	099054 1A	888888 10D 