

## EXTRAFINE-AIR

Nm. 3000

80% (WV) LANA MERINO EXTRAFINE (19,5 µ)  
20% (PA) POLIAMMIDE

Nm. 3000: \* Colori Disponibili

Impiego: Rettilinea Finezza 3-5

1 Capo

Trattandosi di un filato fantasia, è necessario considerare uno scarto macchina superiore ad un filato lineare.  
Si consiglia di lavorare a due o più guidafile.

## FINISSAGGIO

Dettagli di finissaggio sono disponibili su richiesta.

## QUANTITÀ OTTIMALI

Collo ideale: Kg. 24 circa

Supplementi per colli di peso inferiore.

Colori uniti a campione:

kg. 6-16-30-42-63-84-126-252.

I colori tinti in filo potrebbero avere un aspetto meno voluminoso rispetto ai tinti in tops di cartella.

## SOLIDITÀ COLORI:

CONFORMITÀ NORMATIVA REACH

CONFORMITÀ NORMATIVA GB 18401

(Categoria B: prodotti a contatto diretto con la pelle)

PER USO IN RIGATO CON COLORI CONTRASTANTI

RICHIEDERE SOLIDITÀ SPECIFICA.

Eventuali esigenze particolari andranno specificate all'atto dell'ordine.



## EXTRAFINE-AIR

Nm. 3000

80% (WV) EXTRAFINE MERINO WOOL (19,5 µ)  
20% (PA) POLYAMIDE

Nm. 3000: \* Available Colours

Applications: Flat Machine 3-5

1 Ply

Due to the nature of the fancy yarns it is necessary to consider a greater wastage than classic yarns.  
It is advisable to knit using more than one yarn guides.

## FINISHING

Finishing details are available on request.

## IDEAL QUANTITIES

Ideal box: approximately kgs. 24

Surcharge for cartons of inferior weight.

Custom, solid shades:

kgs. 6-16-30-42-63-84-126-252.

Yarn-dyed colours may have a less voluminous look compared to tops-dyed ones.

## COLOURS FASTNESS:

REACH REGULATION

GB 18401 REGULATION COMPLIANCE

(Category B: products directly in contact with the skin)

IN CASE OF STRIPED OR CONTRAST KNITWEAR A

SPECIFIC DYEING FASTNESS MUST BE ASKED.

Any other special need should be expressly requested.



Associazione Tessile e Salute

I nostri articoli soddisfano tutti i requisiti di Tessile e Salute.  
Zegna Baruffa Lane Borgosesia partecipa al progetto  
Tessile e Salute sostenuto dal Ministero della Salute.

[www.tessileesalute.it](http://www.tessileesalute.it)

Certificato n° 14900021



ID Nr. 4S-100277  
visit [4sustainability.it](http://4sustainability.it)



1

2

3

A



630176  
\*



620095  
\*



630007

B



621827  
\*



620443  
\*



620442  
\*

C



620274  
\*



621978



620444  
\*

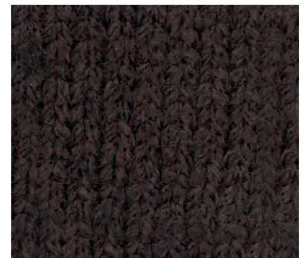
D



630006



620255



620092  
\*

4

5

6

A



620075  
\*



620076  
\*

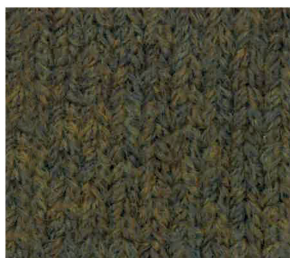


620080

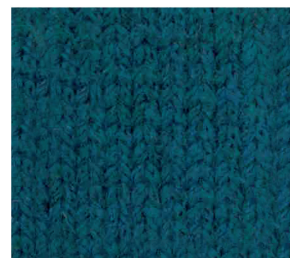
B



620253

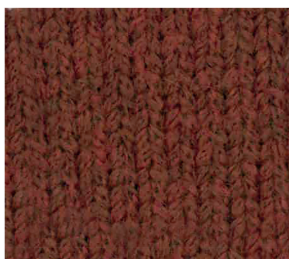


620082  
\*

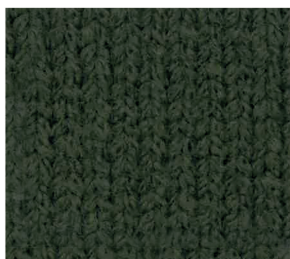


630561  
\*

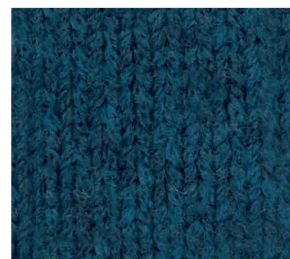
C



620254

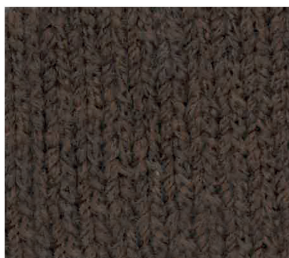


630303



620090  
\*

D



620441  
\*



630559  
\*



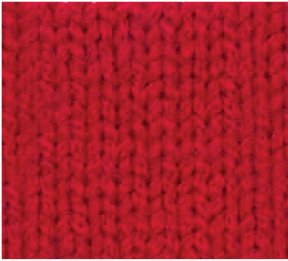
620257  
\*

7

8

9

A



888888



630565



620086

\*

B



620079



630563



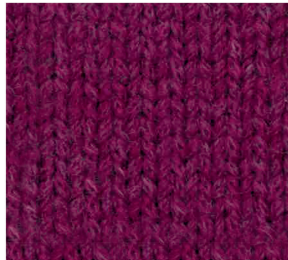
620087

\*

C



620093



630564



620088

\*

D



630306



630005



620089

\*

10

11

12

A



630562  
\*



029293



621894

B



620445  
\*



620072  
\*



620098  
\*

C



630305



620096  
\*



029294



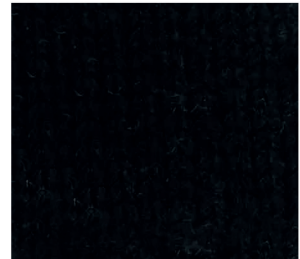
D



620091  
\*



620097  
\*



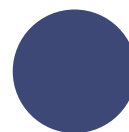
620099  
\*



TANGIBLE BEIGE  
029293



SEALING BARUFFA  
888888



DEEP BLUE  
029294

---

## INDEX

---

029293 11A		* 620095 2A	621894 12A
029294 12C		* 620096 11C	621978 2C
* 620072 11B		* 620097 11D	630005 8D
* 620075 4A		* 620098 12B	630006 1D
* 620076 5A		* 620099 12D	630007 3A
620079 7B		620253 4B	* 630176 1A
620080 6A		620254 4C	630303 5C
* 620082 5B		620255 2D	630305 10C
* 620086 9A		* 620257 6D	630306 7D
* 620087 9B		* 620274 1C	* 630559 5D
* 620088 9C		* 620441 4D	* 630561 6B
* 620089 9D		* 620442 3B	* 630562 10A
* 620090 6C		* 620443 2B	630563 8B
* 620091 10D		* 620444 3C	630564 8C
* 620092 3D		* 620445 10B	630565 8A
620093 7C		* 621827 1B	888888 7A

\* Colori disponibili / Available colours