

TRADITIONAL WOOL

Nm. 2/30 - Nm. 2/48

100% (WV) LANA MERINO EXTRAFINE (19,5 µ)



IMPIEGO OTTIMALE

Nm. 2/30

Rettilinea fin. 12-14

1 Capo

Nm. 2/48

Rettilinea fin. 14-16

1 Capo

FINISSAGGIO

Dettagli di finissaggio disponibili su richiesta.

QUANTITÀ OTTIMALI

Colori disponibili: a partire da 1 kg.

Quantità minima ordinabile 20 kg.

Le informazioni sui minimi sono disponibili sulla scheda tecnica.

Versione RWS su richiesta.

SOLIDITÀ COLORI:

CONFORMITÀ NORMATIVA REACH

CONFORMITÀ NORMATIVA GB 18401

(Categoria B: prodotti a contatto diretto con la pelle)

PER USO IN RIGATO CON COLORI CONTRASTANTI
RICHIEDERE SOLIDITÀ SPECIFICA.

I colori possono subire un naturale viraggio dall'originale, a seconda dei tempi di esposizione a luci o calore.

Eventuali esigenze particolari, inclusa lavorazione a capo integrale, andranno specificate all'atto dell'ordine.

Qualora venga confermato un difetto del filo, non saranno riconosciuti danni per quantità smacchinate oltre il 10% in peso della quantità consegnata.

TRADITIONAL WOOL

Nm. 2/30 - Nm. 2/48

100% (WV) EXTRAFINE MERINO WOOL (19,5 µ)



IDEAL KNITTING

Nm. 2/30

Flat machine 12-14

1 Ply

Nm. 2/48

Flat machine 14-16

1 Ply

FINISHING

Finishing details are available on request.

IDEAL QUANTITIES

Available colours: starting from kg. 1 each

Minimum order quantity kgs. 20.

Information regarding minimum quantities is available in the technical data sheet.

RWS version available on request.

COLOURS FASTNESS:

REACH REGULATION

GB 18401 REGULATION COMPLIANCE

(Category B: products directly in contact with the skin)

IN CASE OF STRIPED OR CONTRAST KNITWEAR A
SPECIFIC DYEING FASTNESS MUST BE ASKED.

Colours may fade naturally from their original shade depending on their exposure to light or heat.

Any other special need should expressly requested, included seamless knitwear info.

If it's confirmed as a yarn defect, we will not accept any claims for any knitted quantity over 10% of the delivered weight.



ID Nr. 4S-100277



100% RWS Wool
Certified by ICEA | ICEA-TX-741

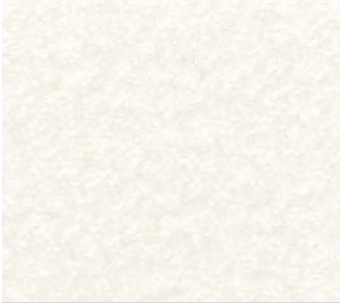


1

2

3

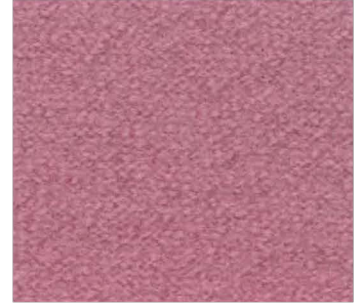
A



001205
● *



029293



028349

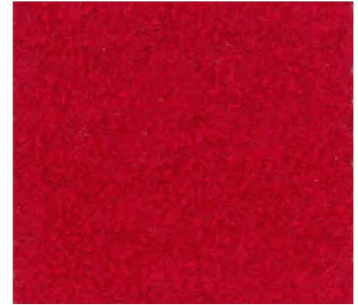
B



029813

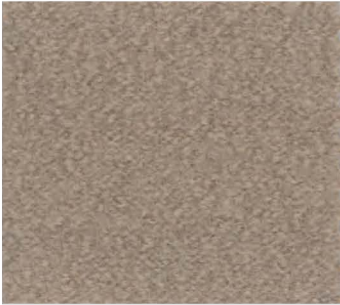


029812



888888

C



029814



029816



008768

D



029815
●



029817



029818

4

5

6

A



029538



029055

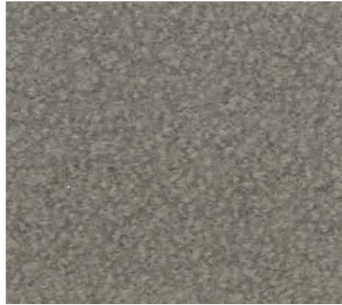


027838

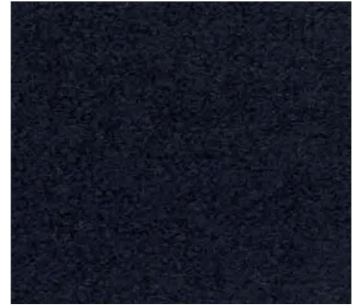
B



028360



029054



029294



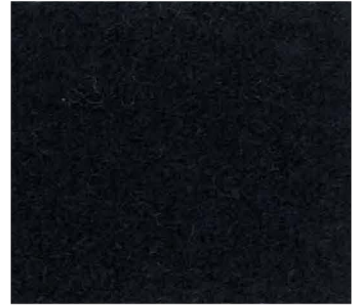
C



028857



028669



008800

● *

D



027218



025628



099070

● *

7

8

9

A



SUPERMELANGE
421669



SUPERMELANGE
421965

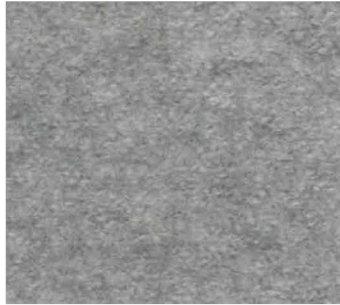


SUPERMELANGE
420667

B



SUPERMELANGE
421506
*

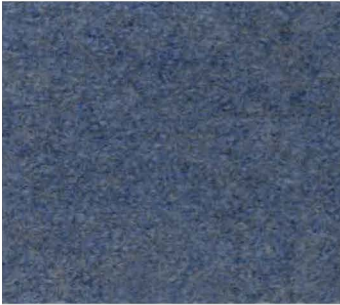


SUPERMELANGE
421508
*

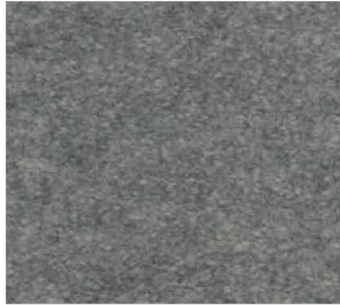


SUPERMELANGE
421745

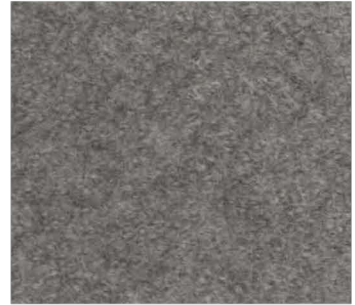
C



SUPERMELANGE
421505



SUPERMELANGE
420266

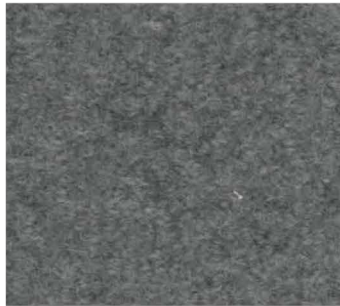


SUPERMELANGE
421425
*

D



MELANGE
441706



SUPERMELANGE
421426



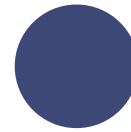
SUPERMELANGE
421436



TANGIBLE BEIGE
029293



SEALING BARUFFA
888888



DEEP BLUE
029294

INDEX

● *	001205	1A						
	008768	3C						
● *	008800	6C						
	025628	5D						
	027218	4D						
	027838	6A						
	028349	3A						
	028360	4B						
	028669	5C						
	028857	4C						
	029054	5B						
	029055	5A						
			SUPERMELANGE					
				●	029293	2A		SUPERMELANGE
					029294	6B		SUPERMELANGE
					029538	4A		SUPERMELANGE
					029812	2B		SUPERMELANGE
					029813	1B		SUPERMELANGE
					029814	1C		SUPERMELANGE
				●	029815	1D		SUPERMELANGE
					029816	2C		SUPERMELANGE
					029817	2D		SUPERMELANGE
					029818	3D		SUPERMELANGE
				● *	099070	6D		MELANGE
					420266	8C		
								420667
								9A
								* 421425
								9C
								421426
								8D
								421436
								9D
								421505
								7C
								* 421506
								7B
								* 421508
								8B
								421669
								7A
								421745
								9B
								421965
								8A
								441706
								7D
								888888
								3B