

CASHWOOL® SWE

Nm. 2/30 - Nm. 2/48

100% (WV) LANA MERINO EXTRAFINE (19,5 µ)



IMPIEGO OTTIMALE

Nm. 2/30

Rettilinea Finezza 12-14

1 capo

Nm. 2/48

Rettilinea Finezza 14-18

1 capo

SUPERMELANGE: Effetti cromatici mélange ottenuti grazie allo sviluppo di una tecnologia speciale che consente una diversa e più completa miscelatura delle fibre colorate.

FINISSAGGIO

Dettagli di finissaggio disponibili su richiesta.

QUANTITÀ OTTIMALI

Colori disponibili a partire da kg.1.

Quantità minima ordinabile kg. 20.

Le informazioni sui minimi sono disponibili sulla scheda tecnica.

Versione RWS: vedi indice.

SOLIDITÀ COLORI:

CONFORMITÀ NORMATIVA REACH

CONFORMITÀ NORMATIVA GB 18401

(Categoria B: prodotti a contatto diretto con la pelle)

PER USO IN RIGATO CON COLORI CONTRASTANTI
RICHIEDERE SOLIDITÀ SPECIFICA.

I colori possono subire un naturale viraggio dall'originale, a seconda dei tempi di esposizione a luci o calore.

Eventuali esigenze particolari, inclusa lavorazione a capo integrale, andranno specificate all'atto dell'ordine.

Qualora venga confermato un difetto del filo, non saranno riconosciuti danni per quantità smacchinate oltre il 10% in peso della quantità consegnata.

Lavabile in lavatrice

Easy care



Machine washable

Easy care

Il filato Cashwool® SWE raggiunge gli standard "Total Easy Care" se lavorato seguendo le indicazioni Woolmark.

Cashwool® SWE yarn complies with "Total Easy Care" standards when processed in accordance with Woolmark guidelines.

Lavabile in lavatrice

e asciugabile in tumbler

Total easy care



Machine washable

and tumble dry

Total easy care

CASHWOOL® SWE

Nm. 2/30 - Nm. 2/48

100% (WV) EXTRAFINE MERINO WOOL (19,5 µ)



IDEAL KNITTING

Nm. 2/30

Flat Machine 12-14

1 Ply

Nm. 2/48

Flat Machine 14-18

1 Ply

SUPERMELANGE: Mélange colour effects, achieved by using a special technology that enables us to create new different and better blends of coloured fibres.

FINISHING

Finishing details are available on request.

IDEAL QUANTITIES

Available colours starting from kg. 1 each.

Minimum order quantity kgs. 20.

Information regarding minimum quantities is available in the technical data sheet.

RWS version: see the index.

COLOURS FASTNESS:

REACH REGULATION

GB 18401 REGULATION COMPLIANCE

(Category B: products directly in contact with the skin)

IN CASE OF STRIPED OR CONTRAST KNITWEAR A
SPECIFIC DYEING FASTNESS MUST BE ASKED.

Colours may fade naturally from their original shade depending on their exposure to light or heat.

Any other special need should expressly requested, included seamless knitwear info.

If it's confirmed as a yarn defect, we will not accept any claims for any knitted quantity over 10% of the delivered weight.



ID Nr. 45-100277



100% RWS Wool
Certified by ICEA | ICEA-TX-741



1

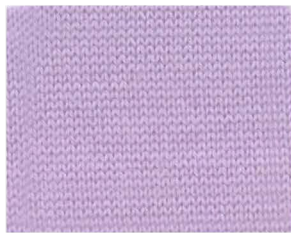
2

3



A

099054



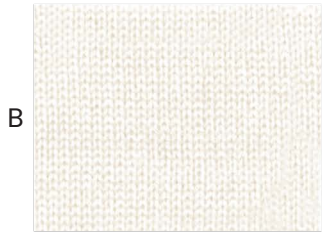
A

029277



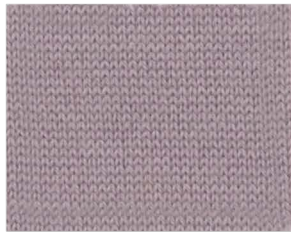
A

290307



B

001205



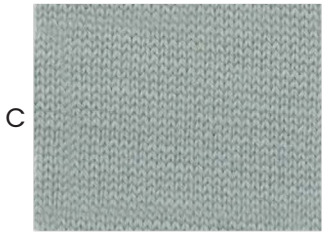
B

028775



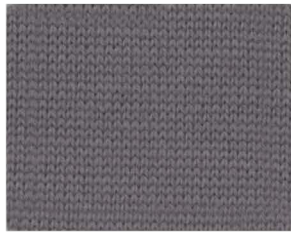
B

028670



C

028776



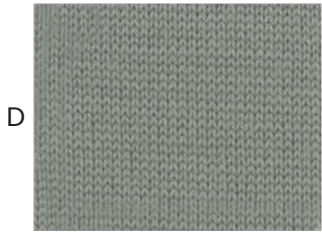
C

029279



C

209307



D

029271



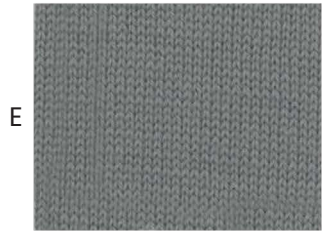
D

027978



D

028999



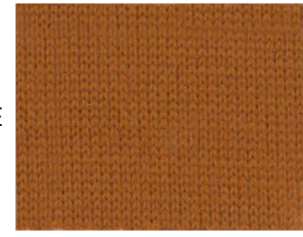
E

028995



E

028332



E

028773



F

029779



F

029777



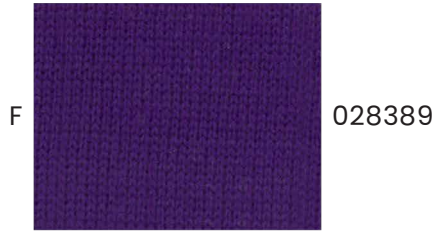
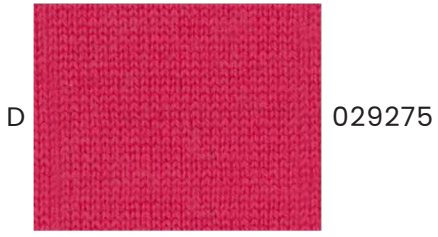
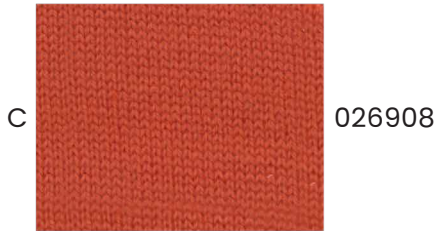
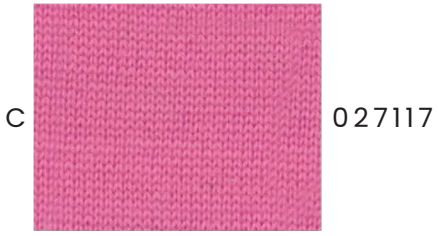
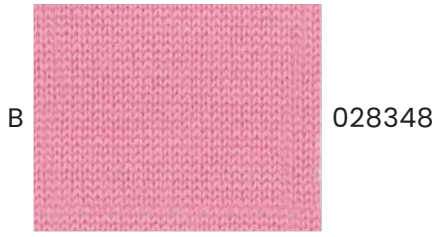
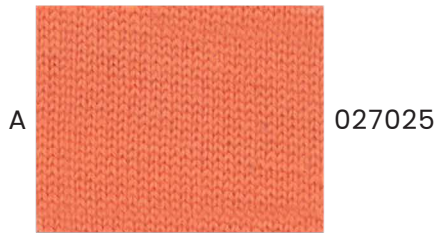
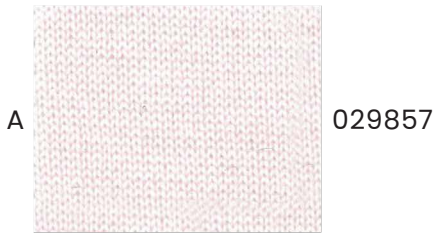
F

027085

4

5

6



CASHWOOL® SWE

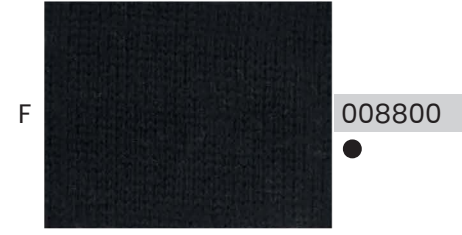
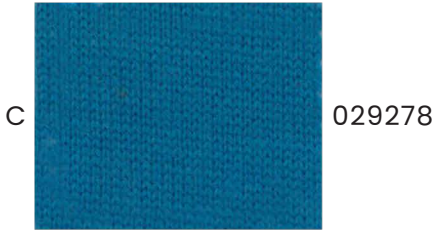
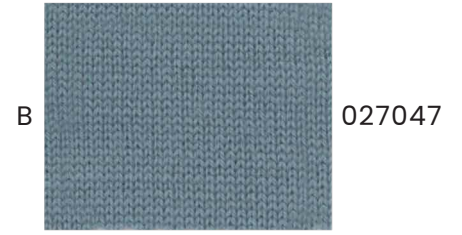
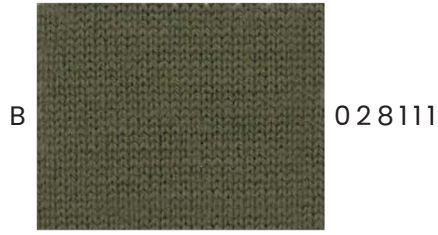
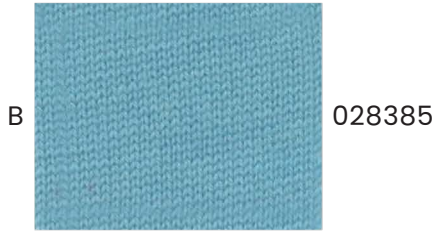
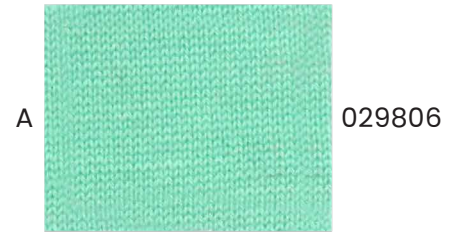
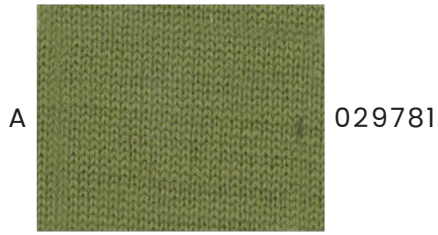
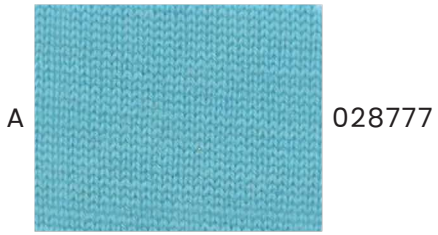
CASHWOOL® SWE

CASHWOOL® SWE

7

8

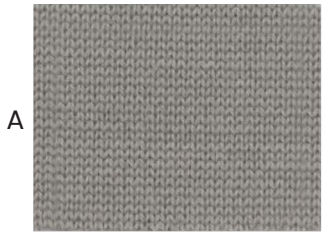
9



10

11

12



A

153527



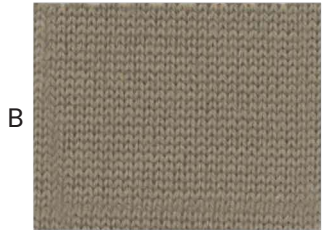
A

028384



A

027123



B

028993



B

118206



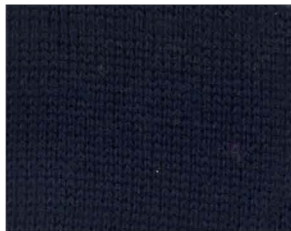
B

028088



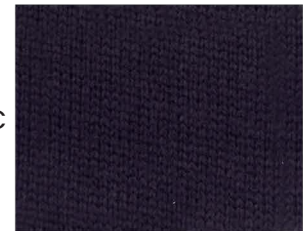
C

028994



C

029294



C

027983



D

028388



D

008802



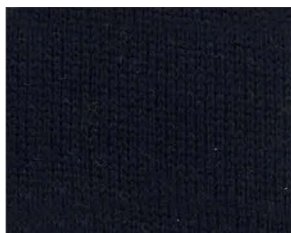
D

028782



E

029270



E

028781



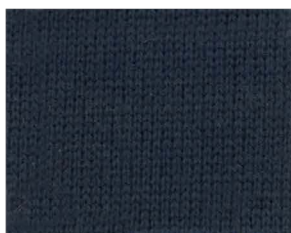
E

161666



F

028125



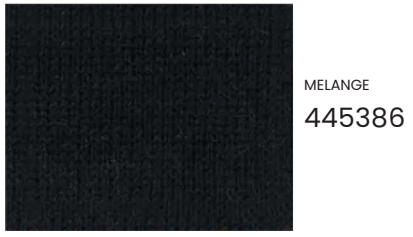
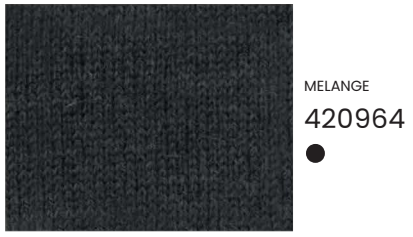
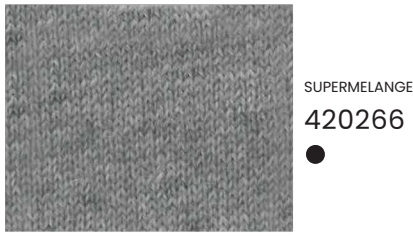
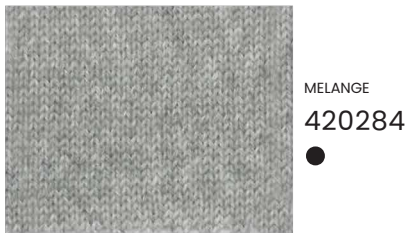
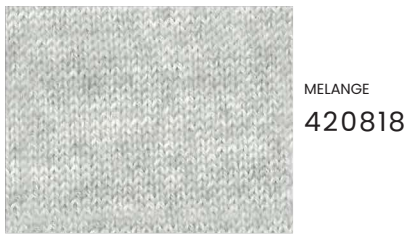
F

025275



F

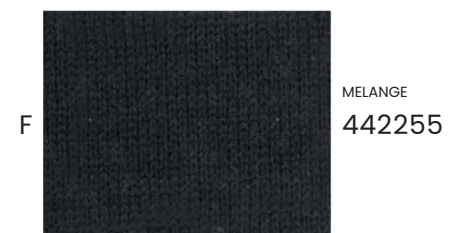
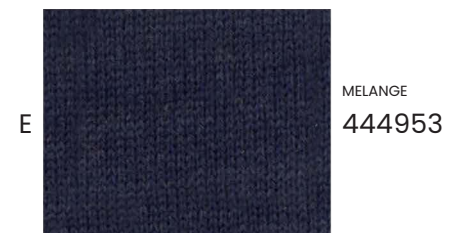
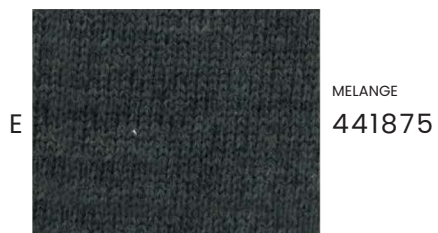
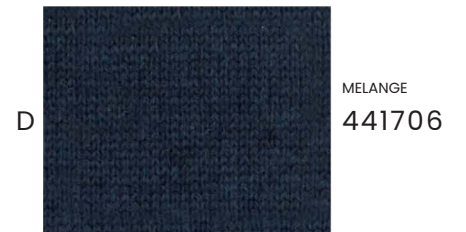
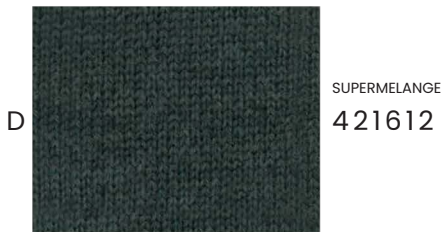
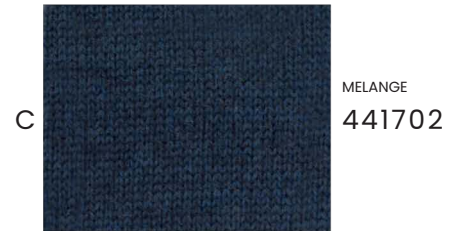
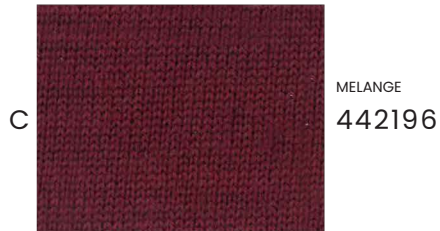
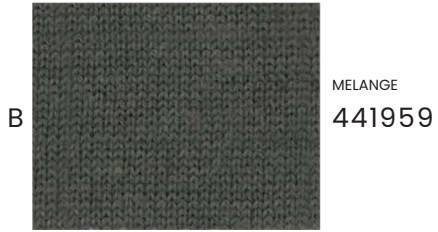
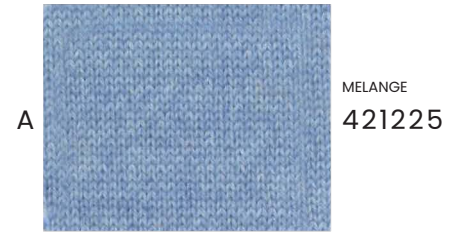
099070



16

17

18



INDEX

000527 6E	028775 2B	290307 3A
● 001205 1B	028776 1C	SUPERMELANGE ● 420266 14C
001254 6A	028777 7A	MELANGE ● 420284 14B
008764 6C	028780 7D	MELANGE ● 420426 15E
008768 6D	028781 11E	MELANGE 420818 14A
● 008800 9F	028782 12D	MELANGE 420938 13B
008802 11D	028862 5B	MELANGE 420939 13C
008804 7F	028993 10B	MELANGE ● 420964 14E
025275 11F	028994 10C	MELANGE 420991 15C
026908 5C	028995 1E	MELANGE 421225 18A
027025 5A	● 028996 8E	SUPERMELANGE 421425 13D
027047 9B	028999 3D	SUPERMELANGE 421428 14D
027085 3F	029270 10E	SUPERMELANGE 421436 15B
027117 4C	029271 1D	SUPERMELANGE 421612 16D
027123 12A	029274 5E	MELANGE ● 440988 15A
027218 9E	029275 4D	MELANGE 441250 16C
027959 7E	029277 2A	MELANGE 441269 15F
027978 2D	029278 7C	MELANGE 441316 13F
027983 12C	029279 2C	MELANGE 441410 18B
028088 12B	029293 13A	MELANGE 441702 18C
028111 8B	029294 11C	MELANGE 441706 18D
028125 10F	029775 16F	MELANGE 441875 16E
028154 8F	029777 2F	MELANGE 441959 16B
● 028156 9C	029779 1F	MELANGE 442000 15D
028332 2E	029781 8A	MELANGE 442195 17D
028348 4B	029806 9A	MELANGE 442196 17C
028384 11A	029857 4A	MELANGE 442255 18F
028385 7B	● 099054 1A	MELANGE 442483 17B
028388 10D	● 099070 12F	MELANGE 442688 17F
028389 4F	118206 11B	MELANGE 442841 13E
028670 3B	141503 6F	MELANGE 444953 18E
028718 8C	150491 4E	MELANGE 444965 17E
028770 8D	153527 10A	MELANGE 445017 16A
028772 5D	156277 9D	MELANGE 445385 17A
028773 3E	● 161666 12E	MELANGE 445386 14F
● 028774 5F	209307 3C	888888 6B