

TRIPLE CASHWOOL®

Nm. 3/48

100% (WV) LANA MERINO EXTRAFINE (19,5 µ)

Nm. 3/48: ● Colori Disponibili

Impiego: Rettilinea Finezza 12-14 Cotton 21-24 gg. 1 Capo



FINISSAGGIO

Dettagli di finissaggio sono disponibili su richiesta.

QUANTITÀ OTTIMALI

Colori disponibili: a partire da 1 kg.

Collo ideale Kg. 20 circa

Supplementi per colli di peso inferiore

Colori uniti o a campione:

kg. 9-18-30-45-70-100-160-320-630.

SOLIDITÀ COLORI:

CONFORMITÀ NORMATIVA REACH

CONFORMITÀ NORMATIVA GB 18401

(Categoria B: prodotti a contatto diretto con la pelle)

PER USO IN RIGATO CON COLORI CONTRASTANTI
RICHIEDERE SOLIDITÀ SPECIFICA.

Eventuali esigenze particolari andranno specificate all'atto dell'ordine.

Qualora venga confermato un difetto del filo, non saranno riconosciuti danni per quantità smacchinate oltre il 10% in peso della quantità consegnata.

TRIPLE CASHWOOL®

Nm. 3/48

100% (WV) EXTRAFINE MERINO WOOL (19,5 µ)

Nm. 3/48: ● Available colours

Applications: Flat Machine 12-14 Cotton 21-24 gg. 1 Ply



FINISHING

Finishing details are available on request.

IDEAL QUANTITIES

Available colours: starting from 1 Kg. each

Standard box approximately kgs. 20

Surcharge for cartons of inferior weight.

Non available or custom solid colours:

kgs. 9-18-30-45-70-100-160-320-630.

COLOURS FASTNESS:

REACH REGULATION

GB 18401 REGULATION COMPLIANCE

(Category B: products directly in contact with the skin)

IN CASE OF STRIPED OR CONTRAST KNITWEAR A
SPECIFIC DYEING FASTNESS MUST BE ASKED.

Any other special need should be expressly requested.

If it's confirmed as a yarn defect, we will not accept any claims for any knitted quantity over 10% of the delivered weight.



ID Nr. 4S-100277



993654.0
CENTROCOT

1

2

3

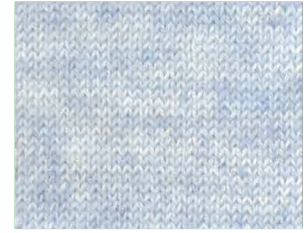
A



SUPERMELANGE
421850



SUPERMELANGE
421921



SUPERMELANGE
421669

B



MELANGE
441250



SUPERMELANGE
421928



SUPERMELANGE
421506

C



MELANGE
442232



MELANGE
441410



SUPERMELANGE
421420

D



MELANGE
445173



MELANGE
441706



MELANGE
442194

E



MELANGE
442873



MELANGE
445368



MELANGE
441269

F



SUPERMELANGE
421849



MELANGE
442688



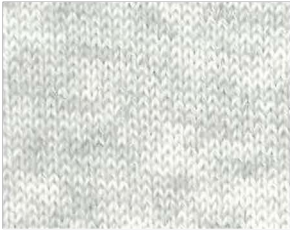
SUPERMELANGE
421605

4

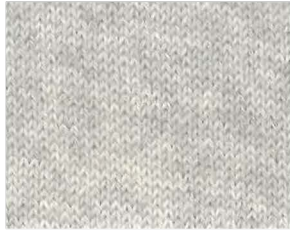
5

6

A



SUPERMELANGE
421607

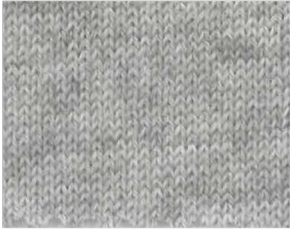


SUPERMELANGE
420667

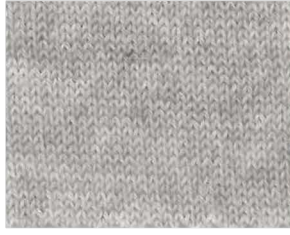


SUPERMELANGE
421968

B



SUPERMELANGE
421508



SUPERMELANGE
421976

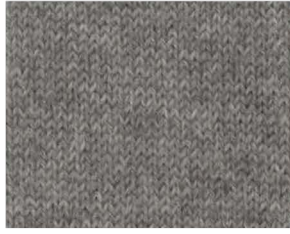


SUPERMELANGE
420939

C



SUPERMELANGE
420266
●

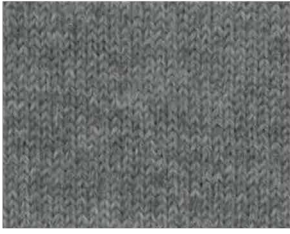


SUPERMELANGE
421425
●



SUPERMELANGE
421433

D



SUPERMELANGE
421426



MELANGE
421015
●



MELANGE
441316

E



SUPERMELANGE
421135
●



SUPERMELANGE
420942



MELANGE
442191

F



MELANGE
420964



MELANGE
420991



MELANGE
442842

7

8

9

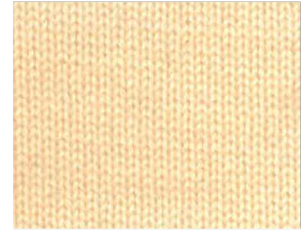
A



029060

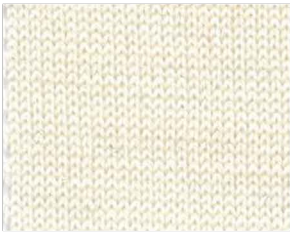


001205

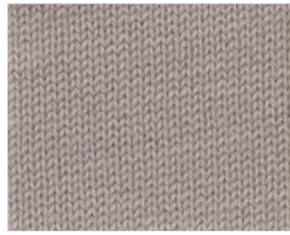


029553

B



029293

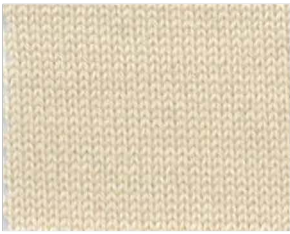


029246

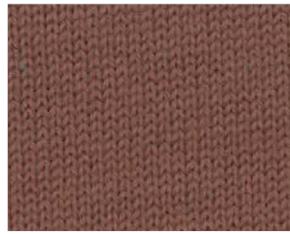


029533

C



029011



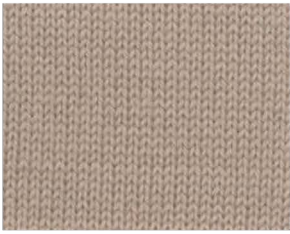
029095



888888



D



029250



029102



008768



E



029012



029093



029101

F



029254



025628



026672



10

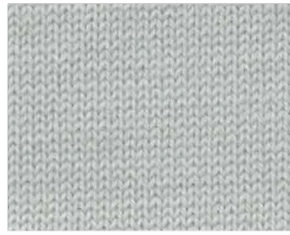
11

12

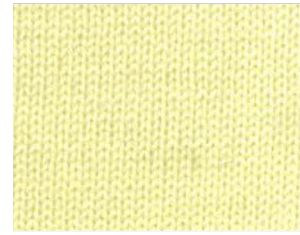
A



099054

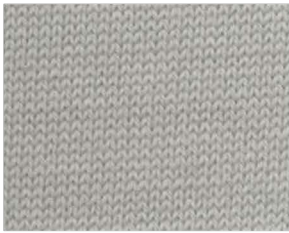


029542



029535

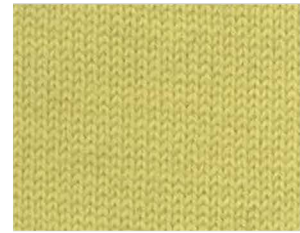
B



029055

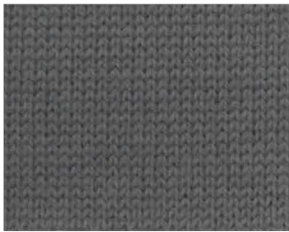


029091



029530

C



029543



028693



029538

D



029294



025275



028988



E



008800



008804



029251

F



099070



008802



025158

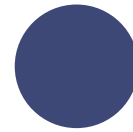




TANGIBLE BEIGE
029293



SEALING BARUFFA
888888



DEEP BLUE
029294

INDEX

| | | | | | |
|--------------|--------------|--------------|---|--------------|-------------|
| ● 001205 8A | | 029293 7B | ● | SUPERMELANGE | 421508 4B |
| ● 008768 9D | | 029294 10D | ● | SUPERMELANGE | 421605 3F |
| ● 008800 10E | | 029530 12B | | SUPERMELANGE | 421607 4A |
| 008802 11F | | 029533 9B | | SUPERMELANGE | 421669 3A |
| 008804 11E | | 029535 12A | | SUPERMELANGE | 421849 1F |
| ● 025158 12F | | 029538 12C | | SUPERMELANGE | 421850 1A |
| ● 025275 11D | | 029542 11A | | SUPERMELANGE | 421921 2A |
| 025628 8F | | 029543 10C | | SUPERMELANGE | 421928 2B |
| ● 026672 9F | | 029553 9A | | SUPERMELANGE | 421968 6A |
| 028693 11C | | 099054 10A | | SUPERMELANGE | 421976 5B |
| ● 028988 12D | | ● 099070 10F | | MELANGE | 441250 1B |
| 029011 7C | SUPERMELANGE | ● 420266 4C | | MELANGE | 441269 3E |
| ● 029012 7E | SUPERMELANGE | 420667 5A | | MELANGE | 441316 6D |
| 029055 10B | SUPERMELANGE | 420939 6B | | MELANGE | 441410 2C |
| ● 029060 7A | SUPERMELANGE | 420942 5E | | MELANGE | 441706 2D |
| 029091 11B | MELANGE | 420964 4F | | MELANGE | 442191 6E |
| 029093 8E | MELANGE | 420991 5F | | MELANGE | ● 442194 3D |
| 029095 8C | MELANGE | ● 421015 5D | | MELANGE | 442232 1C |
| 029101 9E | SUPERMELANGE | ● 421135 4E | | MELANGE | 442688 2F |
| 029102 8D | SUPERMELANGE | 421420 3C | | MELANGE | 442842 6F |
| 029246 8B | SUPERMELANGE | ● 421425 5C | | MELANGE | 442873 1E |
| 029250 7D | SUPERMELANGE | 421426 4D | | MELANGE | 445173 1D |
| 029251 12E | SUPERMELANGE | 421433 6C | | MELANGE | 445368 2E |
| 029254 7F | SUPERMELANGE | 421506 3B | | MELANGE | 888888 9C |